

Table 1.1 GEOGRAPHY OF THE MARSHALL ISLANDS.

Name	Type	Approximate No. of Islets	Area (square miles)		Latitude (Deg. Min.)	Longitude (Deg. Min.)
			Lagoon	Dry Land		
Marshall Islands		1,225	4,506.87	70.05	4 34' - 14 42'	160 47' - 172 10'
Ratak Chain		641	1672.52	34.02	5 53' - 14 42'	168 53' - 172 10'
1 Bokak	Atoll	10	30.13	1.25	14 32' - 14 42'	168 53' - 169 1'
2 Bikar	Atoll	7	14.44	0.19	12 11' - 12 18'	170 4' - 170 9'
3 Utrok	Atoll	10	22.29	0.94	11 12' - 11 12'	169 45' - 169 51'
4 Toke	Atoll	6	35.96	0.22	11 5' - 11 30'	169 33' - 169 40'
5 Mejit	Island	1	—	0.72	10 16' - 10 18'	170 52' - 70 53'
6 Ailuk	Atoll	55	68.47	2.07	10 12' - 10 27'	169 52' - 169 59'
7 Jemo	Island	1	—	0.06	10 7'	169 33'
8 Likiep	Atoll	65	163.71	3.96	9 48' - 10 4'	168 58' - 169 20'
9 Wotje	Atoll	75	241.06	3.16	9 21' - 9 32'	169 48' - 170 15'
10 Erkub	Atoll	16	88.92	0.59	9 8'	170 0'
11 Maloelap	Atoll	75	375.57	3.79	8 29' - 8 55'	170 50' - 171 15'
12 Aur	Atoll	43	92.58	2.17	8 7' - 8 22'	171 1' - 171 12'
13 Majuro	Atoll	64	113.92	3.75	7 3' - 7 13'	171 2' - 171 58'
14 Arno	Atoll	103	130.77	5.00	6 58' - 7 18'	171 33' - 171 57'
15 Mili	Atoll	92	294.70	6.15	5 53' - 6 16'	171 42' - 172 10'
16 Nadikdik	Atoll	18	—	—	—	—
Ralik Chain		584	2834.35	36.03	4 34' - 11 42'	160 47' - 169 44'
17 Enewetak	Atoll	44	387.99	2.26	11 20' - 11 41'	162 17' - 162 24'
18 Ujelang	Atoll	30	25.47	0.67	9 46' - 9 53'	160 47' - 161 0'
19 Bikini	Atoll	36	229.40	2.32	11 29' - 11 42'	165 12' - 165 34'
20 Rongdrik	Atoll	14	55.38	0.65	11 15' - 11 25'	167 22' - 167 32'
21 Ronglap	Atoll	61	387.77	3.07	11 9' - 11 29'	166 38' - 167 4'
22 Ailinginae	Atoll	25	40.91	1.08	11 8' - 11 11'	166 17' - 166 2'
23 Wotho	Atoll	18	36.65	1.67	10 1' - 10 11'	165 54' - 165 46'
24 Ujae	Atoll	15	71.79	0.72	8 55' - 9 12'	165 30' - 166 16'
25 Lae	Atoll	20	6.82	0.56	8 54' - 9 2'	166 11' - 167 46'
26 Kwajalein	Atoll	93	839.30	6.33	8 48' - 9 22'	166 49' - 167 25'
27 Lib	Island	1	—	0.36	8 20' - 8 22'	167 23' - 168 18'
28 Namu	Atoll	54	153.53	2.42	7 45' - 8 12'	167 58' - 168 59'
29 Jabat	Island	1	—	0.22	7 44' - 7 5'	168 58' - 168 59'
30 Ailinglaplap	Atoll	56	289.69	5.67	7 16' - 7 36'	168 33' - 169 44'
31 Jaluit	Atoll	91	266.31	4.38	5 47' - 6 18'	169 24' - 169 44'
32 Kili	Island	1	—	0.36	5 37' - 5 38'	169 7' - 169 8'
33 Namdrik	Atoll	2	3.25	1.07	5 35' - 5 38'	168 5' - 168 9'
34 Ebon	Atoll	22	40.09	2.22	4 34' - 4 42'	168 38' - 168 47'

Note: There are 29 atolls and 5 islands that make up the Marshall Islands.

Source: Bryan, E.H., Guide to Place Names are given in the Trust Territory of the Pacific Islands, 1971.

Table 1.2 DISTANCE BETWEEN ATOLLS/ISLANDS

Atoll/Island	AILINGLAPLAP	AILUK	AIROK	ARNO	AUR	BIKINI	EBON	EBEYE	ENEWETAK	JABOT	KAVEN	KILI	LAE	LIB	LIKIEP	MAJURO	MEJIT	MILI	NAMORIK	NAMU	RONGLAP	TABAL	UJAE	UJELANG	UTRIK	WOTHO	WOTJE	
AILINGLAPLAP	-	187	160	180	150	310	165	110	452	30	95	160	105	180	100	152	150	210	208	103	75	260	150	205	485	240	240	150
AILUK	187	-	125	220	145	273	345	160	455	165	257	95	282	235	190	45	205	55	275	240	172	190	135	380	540	80	235	45
AIROK	160	125	-	108	20	380	280	200	532	133	180	30	215	290	220	140	90	110	150	250	175	250	10	220	615	185	310	80
ARNO	180	220	108	-	80	420	220	200	624	170	135	108	170	345	260	30	200	60	225	215	385	85	375	670	275	385	175	
AUR	150	145	20	80	-	395	255	200	532	128	160	50	190	290	220	150	70	135	133	235	175	315	10	330	620	200	325	100
BIKINI	310	273	380	450	395	-	462	217	194	307	315	358	416	165	225	439	329	496	390	250	95	390	142	290	255	88	307	
EBON	165	345	280	220	255	462	-	255	565	188	95	280	65	295	230	315	220	360	195	70	200	415	255	320	560	400	365	300
EBEYE	110	160	200	260	200	217	255	-	354	103	200	200	90	35	120	235	200	300	185	40	150	200	120	470	250	130	150	
ENEWETAK	452	455	532	624	532	194	565	354	-	455	542	508	545	276	356	432	595	518	661	497	392	271	542	240	123	444	227	453
JABWOT	30	165	133	170	128	307	188	103	455	-	118	128	124	182	104	125	132	188	186	140	68	242	125	220	498	250	235	120
JALUIT	95	275	180	135	160	415	95	200	542	118	-	180	35	265	190	235	130	265	125	90	145	360	160	300	570	315	325	210
KAVEN (MALOELAP)	160	95	30	108	50	358	280	200	508	128	180	-	215	290	220	105	115	85	150	250	170	250	40	220	615	150	310	50
KILI	105	282	215	170	190	416	65	200	545	124	35	215	-	260	185	250	160	295	160	60	150	360	190	285	550	335	325	230
LAE	180	235	290	345	290	116	295	90	276	182	265	290	260	-	80	180	320	285	380	200	110	140	290	30	320	250	80	225
LIB	100	190	220	260	220	225	230	35	356	104	190	220	185	80	-	140	245	240	300	165	35	170	220	105	395	225	140	170
LIKIEP	152	45	140	230	150	245	315	120	432	125	235	105	250	180	140	-	205	95	275	260	130	160	140	215	485	95	185	60
MAJURO	150	205	90	30	70	439	220	235	595	132	130	115	160	320	245	206	-	200	85	215	210	360	80	350	635	265	365	160
MEJIT	210	55	110	200	130	329	360	200	518	188	265	85	295	285	240	95	200	-	255	320	210	240	120	320	600	85	290	65
MILI	208	275	150	60	133	496	195	300	661	186	125	150	160	380	300	275	80	255	-	220	250	425	133	410	700	330	420	230
NAMORIK	103	240	250	225	235	390	79	185	497	140	90	250	60	220	165	260	215	320	220	-	140	350	235	250	490	350	300	260
NAMU	75	172	175	215	175	250	200	40	392	68	145	170	150	110	35	130	210	210	250	140	-	190	175	140	425	220	170	145
RONGELAP	260	190	250	385	315	95	415	150	271	242	360	250	360	140	170	160	360	240	425	350	190	-	315	150	360	190	80	220
TABAL (AUR)	150	135	10	80	10	390	255	200	542	125	160	40	190	290	220	140	80	120	133	236	175	315	-	330	620	190	325	-
UJAE	205	360	220	375	330	142	320	120	240	220	300	220	285	30	105	215	350	320	410	350	140	150	330	-	290	280	80	260
UJELANG	485	540	615	670	620	290	650	410	123	498	570	615	550	320	395	485	635	600	700	490	425	320	620	290	-	540	300	550
UTRIK	240	60	185	275	200	255	400	250	444	250	315	150	335	255	225	90	265	85	330	350	220	180	190	280	540	-	235	110
WOTHO	240	235	310	385	325	88	365	130	227	235	325	310	325	80	140	185	365	290	420	300	170	80	325	80	300	235	-	245
WOTJE	150	45	80	175	100	307	300	150	453	120	210	50	230	225	170	60	160	65	230	260	145	220	90	260	550	110	245	-

Source: Ministry of Transportation and Communications.

Table 1.3 MONTHLY RAINFALL, MAJURO, 1959 - 1997.
(Inches)

Year	Annual	Jan	Feb	Mar	Apr	May	Jun	Jul	Aug	Sept	Oct	Nov	Dec
Record mean	133.38	8.17	6.69	8.99	10.66	11.49	11.87	12.96	11.64	12.50	14.17	13.40	10.84
1959	130.57	1.07	9.47	8.72	12.69	6.35	14.17	11.00	5.33	16.36	11.49	19.92	14.00
1960	153.03	9.17	3.60	11.17	23.41	14.27	13.22	14.10	14.59	16.93	9.71	16.32	6.54
1961	131.69	21.97	6.50	4.24	8.50	8.34	13.90	5.34	11.31	11.14	11.50	12.04	16.91
1962	151.40	17.55	5.15	11.48	5.95	12.01	7.54	11.02	8.91	21.03	16.36	22.69	11.71
1963	131.52	17.46	9.57	12.43	6.21	11.31	11.96	11.69	10.76	6.83	13.13	11.60	8.57
1964	162.70	1.40	6.99	7.23	11.46	22.02	11.16	18.69	15.58	21.11	22.79	16.85	7.42
1965	114.83	9.85	5.32	1.98	4.69	7.93	11.45	14.85	6.92	15.46	14.71	12.12	9.55
1966	128.70	3.79	4.42	5.80	16.03	8.64	9.40	14.94	6.52	13.95	13.53	12.24	19.44
1967	126.05	11.88	9.72	12.46	7.64	4.93	10.98	13.87	7.99	13.78	15.16	11.16	6.48
1968	135.74	5.38	3.49	11.12	8.86	9.33	16.07	11.39	11.50	9.77	12.06	11.97	24.80
1969	134.28	8.22	2.35	16.17	17.21	8.78	13.01	16.65	10.24	15.65	7.11	11.68	7.21
1970	88.95	5.62	0.40	1.73	2.87	9.23	10.66	7.73	11.24	11.75	12.64	6.68	8.40
1971	162.39	8.21	5.74	9.80	31.10	19.86	13.42	15.49	14.92	7.93	18.06	9.46	8.40
1972	157.66	9.58	7.11	15.45	9.17	14.96	14.88	14.76	10.84	18.96	14.06	4.53	23.36
1973	123.99	0.78	1.84	11.05	14.59	14.33	12.23	7.29	13.86	12.78	13.79	14.21	7.24
1974	148.80	11.09	8.07	7.18	15.67	12.84	13.66	12.48	13.69	10.44	19.90	9.29	14.49
1975	151.76	5.20	3.21	7.77	12.76	10.58	17.63	14.23	16.35	16.51	18.29	15.28	13.95
1976	145.01	8.57	9.42	15.68	19.41	15.28	9.43	16.78	8.36	17.66	8.95	12.70	2.77
1977	122.03	2.39	0.77	2.60	10.62	17.21	8.37	10.88	11.15	9.72	17.59	11.85	18.88
1978	142.80	3.60	5.25	3.39	12.65	13.90	10.70	16.25	8.86	9.73	20.56	23.56	14.35
1979	109.29	6.78	2.77	7.14	11.75	7.91	13.23	6.67	13.03	6.54	15.04	11.33	7.10
1980	108.34	8.11	9.70	5.05	7.03	11.34	6.73	8.48	13.89	12.85	9.25	5.35	10.56
1981	119.15	0.90	4.34	17.40	10.20	9.04	5.43	16.53	12.24	6.71	7.28	14.61	14.47
1982	144.50	12.63	9.72	13.29	4.68	11.46	16.98	14.66	11.72	18.94	8.17	19.08	3.17
1983	86.31	0.83	0.98	0.66	1.97	1.49	14.45	12.58	6.05	11.25	13.47	9.84	12.74
1984	115.69	16.12	16.83	1.29	3.87	4.18	5.40	9.35	9.20	6.42	14.77	13.31	14.95
1985	149.72	8.70	16.56	4.59	15.38	9.67	14.67	13.18	16.77	8.03	18.06	12.81	11.30
1986	148.61	10.51	3.91	14.75	12.23	14.94	15.89	12.09	19.98	10.52	7.32	9.37	17.10
1987	122.48	6.24	10.38	4.90	2.14	9.22	14.76	21.17	8.36	11.09	11.29	15.45	7.48
1988	122.30	14.65	1.52	6.76	5.92	6.85	9.11	14.33	10.59	13.86	17.87	7.19	13.65
1989	134.83	7.75	8.30	4.76	8.54	11.18	7.20	17.44	10.34	14.55	16.41	19.84	8.52
1990	118.30	7.01	4.21	10.36	9.43	16.56	7.28	9.09	14.39	7.57	6.17	15.87	10.36
1991	177.84	9.87	11.68	29.54	20.46	13.24	16.60	16.41	11.04	19.73	10.44	15.35	3.48
1992	87.08	7.73	0.20	0.15	0.36	14.21	8.41	10.36	12.62	5.90	13.57	10.05	3.52
1993	152.57	5.82	8.51	13.49	14.10	11.31	8.17	13.92	13.32	9.80	20.48	14.41	19.24
1994	127.65	9.37	1.72	9.45	14.14	15.69	5.70	8.28	11.70	13.19	10.42	11.31	16.68
1995	131.35	8.17	4.37	4.57	21.97	7.91	12.22	10.60	11.89	15.78	10.59	11.18	12.10
1996	144.21	5.69	16.72	8.28	19.47	10.61	12.96	7.39	7.47	15.70	9.74	13.24	16.94
1997	125.20	5.44	6.95	6.57	14.54	21.33	8.19	4.93	11.69	19.09	10.91	7.93	7.63

Note: Record mean of rainfall is the mean of all daily rainfall amounts during the period of record. Record current year, beginning in 1959.

Source : Majuro Weather Station

Table 1.4 MONTHLY AVERAGE TEMPERATURE IN MAJURO, 1959 - 1997.
(Degrees Fahrenheit)

Year	Annual average	Jan	Feb	Mar	Apr	May	Jun	Jul	Aug	Sept	Oct	Nov	Dec
1959	81.3	81.2	80.9	81.5	80.5	82.0	81.1	81.3	82.2	81.4	81.4	81.1	80.6
1960	81.3	81.0	81.6	81.5	80.2	80.6	80.6	81.1	81.2	81.7	82.3	81.8	81.7
1961	81.5	81.3	81.8	82.6	81.7	81.5	81.2	81.5	81.3	81.1	81.9	81.4	80.9
1962	81.3	80.9	81.6	80.7	81.7	82.2	81.3	81.2	81.8	81.0	81.5	80.7	81.5
1963	81.6	80.5	80.5	80.7	82.1	82.3	81.8	81.7	82.2	82.8	81.7	81.8	81.3
1964	81.0	81.8	81.6	81.3	81.4	81.1	80.7	80.8	80.8	80.5	80.7	80.7	80.8
1965	81.1	80.2	80.5	81.5	81.3	81.0	81.2	80.7	82.1	81.3	81.4	81.0	80.8
1966	81.5	81.0	81.3	81.3	80.7	81.7	81.7	81.9	82.5	81.8	81.9	81.2	80.9
1967	81.4	81.0	80.8	80.2	81.2	82.0	81.3	81.4	82.2	82.0	81.4	81.2	81.5
1968	81.0	81.1	81.4	80.3	80.6	80.8	81.1	80.9	81.4	81.8	81.1	81.1	80.6
1969	81.2	80.1	81.1	81.0	80.7	81.5	81.2	80.5	81.6	81.5	82.4	82.0	81.3
1970	81.2	81.2	82.0	82.0	82.1	81.5	80.7	81.1	80.8	81.1	80.6	81.2	80.6
1971	80.5	80.6	80.9	80.9	79.5	80.0	80.2	80.5	80.1	80.8	80.5	81.1	80.5
1972	81.0	80.2	80.9	80.8	80.8	81.2	81.5	80.9	81.2	81.3	80.9	81.7	80.8
1973	80.9	80.9	81.8	81.6	81.3	80.6	80.8	80.9	80.8	80.2	80.5	80.7	81.1
1974	80.7	79.9	80.8	80.8	80.5	80.8	80.6	80.7	81.0	80.9	81.0	80.9	80.3
1975	80.0	80.4	81.0	80.7	80.2	80.5	79.7	79.7	79.9	80.0	78.8	79.4	79.5
1976	80.1	79.4	79.4	79.6	79.5	80.0	80.0	80.0	80.7	80.4	81.4	80.2	80.1
1977	81.1	80.3	81.3	81.5	80.5	80.1	81.2	80.9	81.2	82.4	81.1	81.2	81.1
1978	81.0	81.2	81.1	81.5	80.9	80.5	80.9	80.4	81.5	81.6	81.2	80.6	80.3
1979	81.3	81.2	81.0	81.6	79.7	80.9	81.5	81.5	80.9	82.0	82.1	81.8	81.7
1980	81.6	81.4	81.3	81.3	81.6	81.5	81.9	81.5	81.5	81.7	82.2	81.9	81.0
1981	81.3	81.4	81.5	81.0	80.9	81.4	82.0	80.8	81.4	82.0	82.0	81.0	80.6
1982	81.1	80.5	80.7	80.5	81.8	81.3	81.3	81.1	81.3	81.4	82.0	81.4	80.2
1983	81.3	80.1	80.5	81.4	82.2	83.0	81.4	81.3	82.2	81.8	80.9	81.0	80.3
1984	81.0	80.6	80.6	82.0	81.9	81.5	80.3	80.6	81.8	81.2	80.8	80.6	80.9
1985	80.8	80.8	80.3	80.7	79.8	81.1	80.4	80.7	80.4	81.5	81.4	81.5	80.9
1986	81.4	81.1	81.9	80.3	81.1	81.7	81.1	81.7	81.8	81.8	82.1	81.9	80.5
1987	81.4	80.6	80.7	81.0	81.8	81.5	81.1	80.9	82.1	81.8	82.2	81.8	81.2
1988	81.1	80.9	81.9	81.8	82.1	81.8	81.3	80.2	80.9	80.6	80.3	81.2	80.4
1989	80.9	80.5	80.3	80.6	80.5	80.8	81.0	80.5	80.9	81.1	81.6	81.4	82.0
1990	81.5	81.2	81.6	82.0	81.9	81.1	81.6	81.4	81.7	81.8	81.7	81.8	80.4
1991	80.9	80.1	81.4	79.6	80.3	81.1	80.9	81.3	81.4	81.1	81.8	81.0	81.0
1992	81.7	79.6	81.3	81.6	82.7	81.9	82.0	81.6	82.0	82.6	82.2	81.5	81.6
1993	80.3	78.5	79.5	78.5	79.0	80.0	81.0	81.0	81.5	81.5	81.0	81.0	80.5
1994	81.8	81.0	81.8	81.4	81.6	81.4	82.1	81.9	82.3	82.1	82.3	82.6	81.1
1995	81.5	81.2	81.1	81.6	80.6	81.3	80.9	82.0	81.9	81.8	82.2	82.0	81.7
1996	81.5	81.0	81.1	81.6	80.0	81.3	80.9	82.0	81.9	81.8	82.2	82.0	81.7
1997	81.9	82.3	81.6	82.7	81	81.4	82.0	82.8	81.9	82.0	81.9	82.0	81.2
Record													
Mean	81.2	80.7	81.1	81.1	81.0	81.2	81.1	81.1	81.4	81.5	81.5	81.3	80.9
Maximum	85.8	85.0	85.4	85.6	85.6	85.8	85.7	86.2	86.3	86.3	86.0	86.9	85.3
Minimum	76.4	76.5	76.7	76.6	76.5	76.6	76.3	76.1	76.3	76.3	76.2	76.3	76.3

Note: Record maximum (minimum) temperature is the mean of all daily maximum (minimum) temperatures during the period of record.

Record mean temperature is the sum of the record maximum and record minimum divided by 2.

Record means are through the current year, beginning in 1959.

Source: Majuro Weather Station

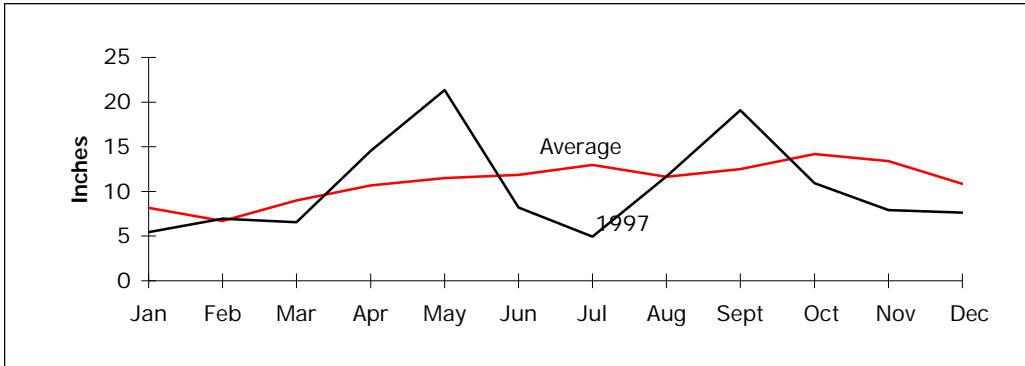


Figure 1.1 Rainfall in Majuro, 1997 (see table 1.3 for data)

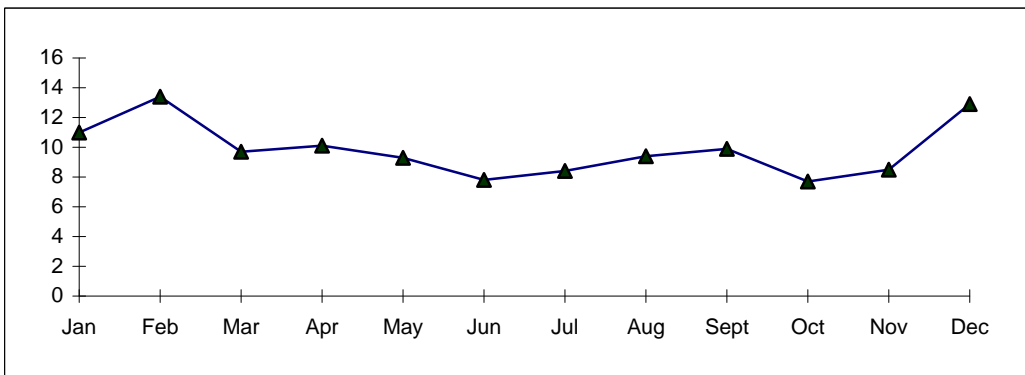


Figure 1.2 Average wind speed, 1997 (see table 1.5 for data)

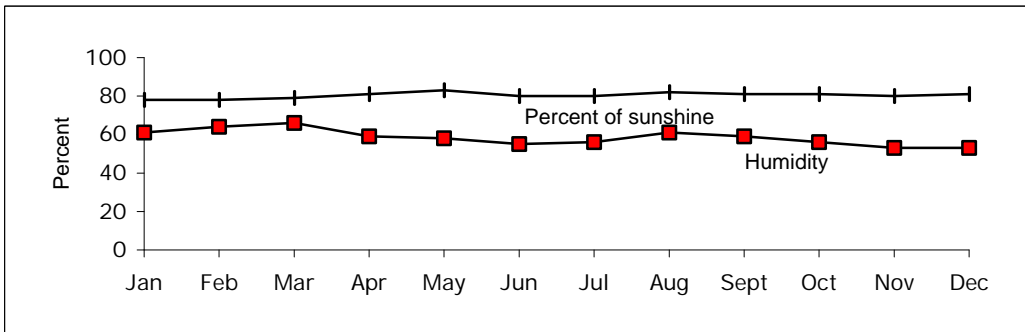


Figure 1.3 Sunshine and humidity, 1997 (see table 1.5 for data)

Table 2.1 RESIDENT POPULATION AND GROWTH RATE, 1920-1994.

Year	Both sexes		Male	Female
	Number	Annual growth rate %	Number	Number
1920 Census	9,800	-	5,196	4,604
1925 Census	9,644	-0.3	5,030	4,614
1930 Census	10,412	1.5	5,505	4,907
1935 Census	10,446	0.1	5,480	4,966
1958 Census	13,928	1.3	7,175	6,753
1967 Census	18,925	3.5	9,658	9,267
1973 Census	24,135	4.1	12,335	11,800
1980 Census	30,873	3.6	15,851	15,022
1988 Census	43,380	4.3	22,181	21,199
1994 Survey (estimates)	53,636	3.6	27,426	26,210

Sources: Trust Territory of the Pacific Islands, Bulletin of Statistics, Vol III. No. 2. 1973
 1988 Census of Population and Housing, OPS
 1994 Multi-Subject Household Survey, OPS

Table 2.2 POPULATION BY SINGLE YEAR OF AGE, 1988.

Age	Both sexes		Male		Female		Age	Both sexes		Male		Female	
	Number	Cumulative total	Number	Cumulative total	Number	Cumulative total		Number	Cumulative total	Number	Cumulative total	Number	Cumulative total
TOTAL	43,380		22,181		21,199								
0	1,766	1,766	931	931	835	835	44	264	39,093	133	19983	131	19110
1	1,826	3,592	919	1,850	907	1,742	45	226	39,319	129	20,112	97	19,207
2	1,726	5,318	878	2,728	848	2,590	46	234	39,553	128	20,240	106	19,313
3	1,668	6,986	850	3,578	818	3,408	47	159	39,712	82	20,322	77	19,390
4	1,665	8,651	845	4,423	820	4,228	48	187	39,899	110	20,432	77	19,467
5	1,659	10,310	839	5,262	820	5,048	49	165	40,064	100	20,532	65	19,532
6	1,562	11,872	788	6,050	774	5,822	50	159	40,223	83	20,615	76	19,608
7	1,449	13,321	746	6,796	703	6,525	51	148	40,371	79	20,694	69	19,677
8	1,562	14,883	801	7,597	761	7,286	52	151	40,522	87	20,781	64	19,741
9	1,377	16,260	710	8,307	667	7,953	53	160	40,682	74	20,855	86	19,827
10	1,280	17,540	673	8,980	607	8,560	54	125	40,807	63	20,918	62	19,889
11	1,203	18,743	602	9,582	601	9,161	55	135	40,942	67	20,985	68	19,957
12	1,176	19,919	621	10,203	555	9,716	56	118	41,060	60	21,045	58	20,015
13	1,143	21,062	601	10,804	542	10,258	57	111	41,171	55	21,100	56	20,071
14	1,074	22,136	558	11,362	516	10,774	58	183	41,354	107	21,207	76	20,147
15	922	23,058	459	11,821	463	11,237	59	133	41,487	70	21,277	63	20,210
16	862	23,920	445	12,266	417	11,654	60	181	41,668	89	21,366	92	20,302
17	746	24,666	394	12,660	352	12,006	61	118	41,786	59	21,425	59	20,361
18	844	25,510	445	13,105	399	12,405	62	110	41,896	55	21,480	55	20,416
19	711	26,221	361	13,466	350	12,755	63	128	42,024	60	21,540	68	20,484
20	724	26,945	359	13,825	365	13,120	64	98	42,122	50	21,590	48	20,532
21	706	27,651	329	14,154	377	13,497	65	119	42,241	51	21,641	68	20,600
22	681	28,332	319	14,473	362	13,859	66	111	42,352	59	21,700	52	20,652
23	683	29,015	313	14,786	370	14,229	67	107	42,459	45	21,745	62	20,714
24	716	29,731	366	15,152	350	14,579	68	123	42,582	67	21,812	56	20,770
25	610	30,341	302	15,454	308	14,887	69	84	42,666	33	21,845	51	20,821
26	619	30,960	317	15,771	302	15,189	70	107	42,773	52	21,897	55	20,876
27	560	31,520	269	16,040	291	15,480	71	74	42,847	38	21,935	36	20,912
28	652	32,172	331	16,371	321	15,801	72	64	42,911	33	21,968	31	20,943
29	586	32,758	301	16,672	285	16,086	73	58	42,969	29	21,997	29	20,972
30	570	33,328	296	16,968	274	16,360	74	70	43,039	31	22,028	39	21,011
31	499	33,827	268	17,236	231	16,591	75	39	43,078	16	22,044	23	21,034
32	521	34,348	229	17,465	292	16,883	76	46	43,124	19	22,063	27	21,061
33	520	34,868	270	17,735	250	17,133	77	45	43,169	25	22,088	20	21,081
34	546	35,414	285	18,020	261	17,394	78	43	43,212	27	22,115	16	21,097
35	478	35,892	280	18,300	198	17,592	79	28	43,240	10	22,125	18	21,115
36	499	36,391	272	18,572	227	17,819	80	26	43,266	9	22,134	17	21,132
37	322	36,713	156	18,728	166	17,985	81	19	43,285	7	22,141	12	21,144
38	469	37,182	255	18,983	214	18,199	82	7	43,292	4	22,145	3	21,147
39	419	37,601	242	19,225	177	18,376	83	17	43,309	5	22,150	12	21,159
40	386	37,987	202	19,427	184	18,560	84	18	43,327	4	22,154	14	21,173
41	306	38,293	146	19,573	160	18,720	85	11	43,338	6	22,160	5	21,178
42	288	38,581	148	19,721	140	18,860	86	11	43,349	6	22,166	5	21,183
43	248	38,829	129	19,850	119	18,979	87	16	43,365	8	22,174	8	21,191
							88	15	43,380	7	22,181	8	21,199

Source: 1988 Census of Population and Housing, OPS

Table 2.3 POPULATION PROJECTIONS BY SEX AND FIVE-YEAR AGE GROUPS, 1995-2010.

Age Group	Year															
	1995	1996	1997	1998	1999	2000	2001	2002	2003	2004	2005	2006	2007	2008	2009	2010
Both Sexes	56678	58746	60832	62924	65127	67438	69863	72397	75033	77701	80412	83175	85996	88868	91808	94810
0-4	11180	11421	11582	11708	11933	12226	12589	6773	13478	13903	14282	14622	14931	15228	15544	15859
5-9	9048	9437	9854	10232	10572	10866	11111	5907	11580	11887	12229	12608	13005	13390	13764	14130
10-14	7933	8065	8219	8439	8721	9065	9456	5111	10182	10484	10751	10995	11249	11540	11863	12218
15-19	6575	6927	7240	7501	7713	7868	8000	4154	8392	8677	9029	9421	9802	10139	10440	10701
20-24	4625	5000	5387	5766	6139	6510	6861	3667	7439	7655	7811	7941	8104	8331	8620	8975
25-29	3594	3669	3792	3984	4245	4569	4941	2768	5702	6074	6447	6800	7116	7378	7594	7751
30-34	3146	3241	3331	3412	3484	3547	3620	1902	3937	4196	4520	4890	5276	5655	6024	6394
35-39	2732	2790	2856	2926	3005	3094	3190	1571	3361	3436	3499	3573	3696	3890	4151	4475
40-44	2326	2404	2476	2544	2609	2673	2736	1410	2871	2950	3040	3137	3227	3311	3383	3447
45-49	1693	1827	1955	2070	2170	2260	2339	1233	2486	2547	2609	2672	2740	2812	2888	2976
50-54	1076	1168	1271	1384	1500	1625	1754	1024	1991	2089	2175	2254	2328	2399	2465	2527
55-59	736	769	814	871	937	1012	1099	597	1307	1418	1535	1658	1776	1885	1979	2064
60-64	607	607	615	628	644	668	701	410	793	854	926	1010	1102	1204	1308	1420
65-69	538	537	535	533	525	522	526	260	551	561	578	603	644	699	751	811
70-74	429	429	433	438	433	427	424	218	428	429	435	439	444	448	464	485
75+	440	455	472	488	497	506	516	231	535	541	546	552	556	559	570	577
Male, Total	29095	30166	31245	32327	33469	34664	35922	37236	38603	39978	41381	42812	44275	45775	47304	48862
0-4	5850	5974	6049	6102	6208	6355	6544	6773	7023	7248	7448	7626	7785	7937	8103	8268
5-9	4654	4876	5114	5329	5517	5674	5799	5907	6031	6188	6365	6562	6771	6973	7168	7358
10-14	4037	4105	4188	4310	4469	4666	4890	5111	5299	5464	5604	5729	5857	6006	6173	6358
15-19	3393	3558	3703	3827	3927	4001	4068	4154	4282	4443	4646	4870	5086	5273	5436	5573
20-24	2408	2605	2804	2994	3178	3355	3520	3667	3791	3894	3968	4034	4122	4249	4411	4613
25-29	1762	1832	1926	2047	2198	2375	2571	2768	2957	3139	3318	3484	3631	3754	3858	3933
30-34	1542	1566	1596	1635	1683	1738	1807	1902	2023	2172	2348	2542	2740	2931	3111	3288
35-39	1375	1407	1439	1467	1492	1516	1541	1571	1610	1659	1714	1783	1875	1996	2146	2323
40-44	1247	1259	1270	1288	1311	1342	1377	1410	1438	1464	1488	1514	1544	1585	1631	1686
45-49	891	986	1072	1136	1181	1207	1220	1233	1254	1276	1306	1341	1375	1404	1429	1453
50-54	572	599	639	696	765	850	942	1024	1088	1130	1155	1169	1184	1205	1229	1259
55-59	397	426	456	485	510	531	557	597	651	717	797	884	961	1021	1061	1085
60-64	309	306	309	318	334	357	384	410	435	457	478	503	540	593	655	731
65-69	269	272	273	272	263	255	254	260	274	290	312	334	356	377	386	395
70-74	191	192	198	207	215	220	221	218	212	198	191	190	198	216	249	278
75+	198	203	209	214	218	222	227	231	235	239	243	247	250	255	258	261
Female, Total	27583	28580	29587	30597	31658	32774	33941	35161	36430	37723	39031	40363	41721	43093	44504	45948
0-4	5330	5447	5533	5606	5725	5871	6045	6243	6455	6655	6834	6996	7146	7291	7441	7591
5-9	4394	4561	4740	4903	5055	5192	5312	5425	5549	5699	5864	6046	6234	6417	6596	6772
10-14	3896	3960	4031	4129	4252	4399	4566	4732	4883	5020	5147	5266	5392	5534	5690	5860
15-19	3182	3369	3537	3674	3786	3867	3932	4008	4110	4234	4383	4551	4716	4866	5004	5128
20-24	2217	2395	2583	2772	2961	3155	3341	3509	3648	3761	3843	3907	3982	4082	4209	4362
25-29	1832	1837	1866	1937	2047	2194	2370	2558	2745	2935	3129	3316	3485	3624	3736	3818
30-34	1604	1675	1735	1777	1801	1809	1813	1843	1914	2024	2172	2348	2536	2724	2913	3106
35-39	1357	1383	1417	1459	1513	1578	1649	1708	1751	1777	1785	1790	1821	1894	2005	2152
40-44	1079	1145	1206	1256	1298	1331	1359	1392	1433	1486	1552	1623	1683	1726	1752	1761
45-49	802	841	883	934	989	1053	1119	1180	1232	1271	1303	1331	1365	1408	1459	1523
50-54	504	569	632	688	735	775	812	853	903	959	1020	1085	1144	1194	1236	1268
55-59	339	343	358	386	427	481	542	602	656	701	738	774	815	864	918	979
60-64	298	301	306	310	310	311	317	331	358	397	448	507	562	611	653	689
65-69	269	265	262	261	262	267	272	276	277	271	266	269	288	322	365	416
70-74	238	237	235	231	218	207	203	206	216	231	244	249	246	232	215	207
75+	242	252	263	274	279	284	289	295	300	302	303	305	306	304	312	316

Notes: 1. Refers to midyear population (at June 30 of each year).

2. For the values of the parameters derived from the projections, please refer to Table 2.15.

3. The assumptions used in the projections are as follows:

	1988 Base Year	2013 End Year
Total Fertility Rate (TFR)	7.2	4.5
Life Expectancy at Birth (Eo)		
- Male	59.6	69.1
- Female	62.6	73.2

Source: 1988 Census of Population and Housing, OPS

Table 2.3a POPULATION PROJECTIONS BY SEX AND FIVE-YEAR AGE GROUPS: 1990-2010

Age group	Year				
	1990	1995	2000	2005	2010
Both sexes	47,036	55,575	68,110	81,261	91,411
0-4 years	9,357	10,346	12,447	14,614	13,955
5-9 years	8,109	9,016	10,864	12,892	12,793
10-14 years	6,588	7,961	9,093	11,010	12,161
15-19 years	4,683	6,484	8,010	9,164	10,752
20-24 years	3,647	4,588	6,505	7,716	8,977
25-29 years	3,196	3,559	4,586	6,223	7,866
30-34 years	2,784	3,117	3,552	4,611	6,359
35-39 years	2,383	2,710	3,365	3,491	4,460
40-44 years	1,754	2,304	2,675	2,970	3,429
45-49 years	1,128	1,677	2,257	2,558	2,950
50-54 years	790	1,067	1,625	2,147	2,494
55-59 years	675	731	1,008	1,512	2,032
60-64 years	625	603	665	942	1,387
65-69 years	546	534	521	595	790
70-74 years	408	432	425	420	458
75+	363	446	512	396	548
Male, total	24,057	28,413	34,668	40,502	46,732
0-4 years	4,799	5,320	6,393	6,689	7,180
5-9 years	4,127	4,629	5,578	6,282	6,583
10-14 years	3,409	4,051	4,665	5,548	6,251
15-19 years	2,440	3,343	4,074	4,638	5,518
20-24 years	1,792	2,388	3,352	4,038	4,601
25-29 years	1,569	1,748	2,386	3,315	3,996
30-34 years	1,402	1,527	1,743	2,353	3,273
35-39 years	1,278	1,363	1,515	1,713	2,317
40-44 years	924	1,231	1,341	1,481	1,677
45-49 years	604	880	1,202	1,298	1,436
50-54 years	429	570	848	1,145	1,240
55-59 years	352	394	531	789	1,068
60-64 years	317	309	353	475	710
65-69 years	258	264	262	299	404
70-74 years	190	198	205	203	234
75+	167	198	220	236	244
Female, total	22,979	27,162	33,442	40,759	44,679
0-4 years	4,558	5,026	6,054	7,925	6,775
5-9 years	3,982	4,387	5,286	6,610	6,210
10-14 years	3,179	3,910	4,428	5,462	5,910
15-19 years	2,243	3,141	3,936	4,526	5,234
20-24 years	1,855	2,200	3,153	3,678	4,376
25-29 years	1,627	1,811	2,200	2,908	3,870
30-34 years	1,382	1,590	1,809	2,258	3,086
35-39 years	1,105	1,347	1,850	1,778	2,143
40-44 years	830	1,073	1,334	1,489	1,752
45-49 years	524	797	1,055	1,260	1,514
50-54 years	361	497	777	1,002	1,254
55-59 years	323	337	477	723	964
60-64 years	308	294	312	467	677
65-69 years	288	270	259	296	386
70-74 years	218	234	220	217	224
75+	196	248	292	160	304

Refers to midyear population (at June 30 of each year).

Source: 1988 Census of Population and Housing, OPS

Table 2.3 POPULATION PROJECTIONS BASED ON 1994 MULTI - SUBJECT HOUSEHOLD SURVEY.

Age Group	Year															
	1995	1996	1997	1998	1999	2000	2001	2002	2003	2004	2005	2006	2007	2008	2009	2010
Both Sexes	####	####	####	####	####	####	####	####	####	####	####	####	####	####	####	####
0-4	####	####	####	####	####	####	####	####	####	####	####	####	####	####	####	####
5-9	9016	9222	9441	9672	9913	####	####	####	####	####	####	####	####	####	####	####
10-14	7961	8183	8386	8578	8768	8965	9171	9389	9328	9861	9090	####	####	####	####	####
15-19	6484	6822	7131	7414	7673	7914	8137	8339	8346	8721	8917	9123	9350	9571	9813	####
20-24	4588	4911	5281	5677	6067	6428	6764	7072	7210	7612	7672	8074	8276	8468	8657	8854
25-29	3559	3694	3849	4035	4262	4536	4856	5224	5404	6002	6362	6696	7002	7282	7540	7779
30-34	3117	3182	3245	3314	3401	3511	3644	3798	3896	4208	4479	4797	5160	5549	5932	6289
35-39	2710	2779	2852	2927	2999	3066	3129	3193	3262	3347	3457	3589	3742	3924	4147	4416
40-44	2304	2389	2461	2525	2587	2652	2720	2793	2866	2938	3004	3067	3130	3200	3285	3393
45-49	1677	1798	1917	2032	2140	2236	2319	2390	2452	2513	2578	2645	2716	2789	5859	2925
50-54	1067	1159	1263	1375	1491	1605	1721	1836	1946	2050	2142	2224	2292	2355	2415	2477
55-59	731	764	807	860	923	999	1086	1184	1290	1399	1507	1616	1725	1830	1929	2017
60-64	603	605	611	622	637	661	693	731	779	837	908	987	1077	1174	1274	1374
65-69	534	529	524	520	518	518	520	526	535	549	570	598	632	674	725	787
70-74	432	436	436	433	429	424	420	417	414	412	413	415	420	428	440	458
75+	446	459	473	487	499	510	520	526	531	536	539	540	542	544	546	549
Male, Total	####	####	####	####	####	####	####	####	####	####	####	####	####	####	####	####
0-4	5320	5360	5427	5524	5654	5833	6120	6420	6360	7048	7373	7701	8033	8367	8702	9038
5-9	4629	4743	4861	4983	5106	5219	5262	5330	5133	5555	5732	6016	6313	6621	3937	7260
10-14	4051	4165	4276	4384	4492	4602	4717	4834	4664	5080	5192	5236	5304	5400	5529	5706
15-19	3343	3505	3650	3782	3906	4025	4139	4249	4173	4466	4576	4690	4817	4929	5053	5165
20-24	2388	2561	2750	2947	3137	3312	3473	3618	3605	3872	3991	4105	4215	4323	4431	4541
25-29	1748	1834	1939	2062	2203	2359	2531	2719	2702	3102	3276	3436	3580	3711	3834	3952
30-34	1527	1554	1580	1611	1657	1723	1808	1912	1948	2174	2328	2499	2684	2877	3064	3237
35-39	1363	1384	1412	1442	1472	1500	1526	1553	1584	1629	1695	1779	1882	2002	2141	2294
40-44	1231	1266	1287	1300	1313	1330	1352	1379	1409	1439	1467	1493	1519	1551	1596	1660
45-49	880	947	1016	1084	1143	1190	1224	1245	1258	1271	1289	1310	1337	1367	4396	1424
50-54	570	615	665	719	777	837	901	968	1032	1089	1134	1168	1188	1202	1216	1233
55-59	394	412	434	460	491	529	571	618	669	723	780	839	903	964	1018	1061
60-64	309	312	319	328	338	352	369	388	412	440	475	513	556	602	651	704
65-69	264	262	260	258	258	260	263	269	277	286	298	313	330	351	375	406
70-74	198	203	205	206	205	203	202	201	200	200	202	205	210	217	225	234
75+	198	200	205	210	215	220	225	228	231	234	236	237	239	240	243	246
Female, Total	####	####	####	####	####	####	####	####	####	####	####	####	####	####	####	####
0-4	5026	5070	5139	5234	5358	5520	5789	6070	6360	6659	6963	7271	7582	7893	8206	8520
5-9	4387	4479	4580	4689	4807	4923	4969	5038	5133	5255	5414	5680	5958	6246	6541	6842
10-14	3910	4018	4110	4194	4276	4363	4454	4555	4664	4781	3898	4944	5014	5108	5230	5389
15-19	3141	3317	3481	3632	3767	3889	3998	4090	4173	4255	4341	4433	4533	4642	4760	4877
20-24	2200	2350	2531	2730	2930	3116	3291	3454	3605	3740	3681	3969	4061	4145	4226	4313
25-29	1811	1860	1910	1973	2059	2177	2325	2505	2702	2900	3086	3260	3422	3571	3706	3827
30-34	1590	1628	1665	1703	1744	1788	1836	1886	1948	2034	2151	2298	2476	2672	2868	3052
35-39	1347	1395	1440	1485	1527	1566	1603	1640	1678	1718	1762	1810	1860	1922	2006	2122
40-44	1073	1123	1174	1225	1274	1322	1368	1414	1457	1499	1537	1574	1611	1649	1689	1733
45-49	797	851	901	948	997	1046	1095	1145	1194	1242	1289	1335	1379	1422	1463	1501
50-54	497	544	598	656	714	768	820	868	914	961	1008	1056	1104	1153	1199	1244
55-59	337	352	373	400	432	470	515	566	621	676	727	777	822	866	911	956
60-64	294	293	292	294	299	309	324	343	367	397	433	474	521	572	623	670
65-69	270	267	264	262	260	258	257	257	258	263	272	285	302	323	350	381
70-74	234	233	231	227	224	221	218	216	214	212	211	210	210	211	215	224
75+	248	259	268	277	284	290	295	298	300	302	303	303	303	303	304	303

Refer to midyear population (at June 30 of each year.)

Source: 1994 Multi-Subject Household Survey, OPS

Table 2.3 POPULATION PROJECTIONS BASED ON 1994 MULTI - SUBJECT HOUSEHOLD SURVEY.

Age Group	Year															
	1995	1996	1997	1998	1999	2000	2001	2002	2003	2004	2005	2006	2007	2008	2009	2010
Both Sexes	####	####	####	####	####	####	####	####	####	####	####	####	####	####	####	####
0-4	####	####	####	####	####	####	####	####	####	####	####	####	####	####	####	####
5-9	9016	9222	9441	9672	9913	####	####	####	####	####	####	####	####	####	####	####
10-14	7961	8183	8386	8578	8768	8965	9171	9389	9328	9861	9090	####	####	####	####	####
15-19	6484	6822	7131	7414	7673	7914	8137	8339	8346	8721	8917	9123	9350	9571	9813	####
20-24	4588	4911	5281	5677	6067	6428	6764	7072	7210	7612	7672	8074	8276	8468	8657	8854
25-29	3559	3694	3849	4035	4262	4536	4856	5224	5404	6002	6362	6696	7002	7282	7540	7779
30-34	3117	3182	3245	3314	3401	3511	3644	3798	3896	4208	4479	4797	5160	5549	5932	6289
35-39	2710	2779	2852	2927	2999	3066	3129	3193	3262	3347	3457	3589	3742	3924	4147	4416
40-44	2304	2389	2461	2525	2587	2652	2720	2793	2866	2938	3004	3067	3130	3200	3285	3393
45-49	1677	1798	1917	2032	2140	2236	2319	2390	2452	2513	2578	2645	2716	2789	5859	2925
50-54	1067	1159	1263	1375	1491	1605	1721	1836	1946	2050	2142	2224	2292	2355	2415	2477
55-59	731	764	807	860	923	999	1086	1184	1290	1399	1507	1616	1725	1830	1929	2017
60-64	603	605	611	622	637	661	693	731	779	837	908	987	1077	1174	1274	1374
65-69	534	529	524	520	518	518	520	526	535	549	570	598	632	674	725	787
70-74	432	436	436	433	429	424	420	417	414	412	413	415	420	428	440	458
75+	446	459	473	487	499	510	520	526	531	536	539	540	542	544	546	549
Male, Total	####	####	####	####	####	####	####	####	####	####	####	####	####	####	####	####
0-4	5320	5360	5427	5524	5654	5833	6120	6420	6360	7048	7373	7701	8033	8367	8702	9038
5-9	4629	4743	4861	4983	5106	5219	5262	5330	5133	5555	5732	6016	6313	6621	3937	7260
10-14	4051	4165	4276	4384	4492	4602	4717	4834	4664	5080	5192	5236	5304	5400	5529	5706
15-19	3343	3505	3650	3782	3906	4025	4139	4249	4173	4466	4576	4690	4817	4929	5053	5165
20-24	2388	2561	2750	2947	3137	3312	3473	3618	3605	3872	3991	4105	4215	4323	4431	4541
25-29	1748	1834	1939	2062	2203	2359	2531	2719	2702	3102	3276	3436	3580	3711	3834	3952
30-34	1527	1554	1580	1611	1657	1723	1808	1912	1948	2174	2328	2499	2684	2877	3064	3237
35-39	1363	1384	1412	1442	1472	1500	1526	1553	1584	1629	1695	1779	1882	2002	2141	2294
40-44	1231	1266	1287	1300	1313	1330	1352	1379	1409	1439	1467	1493	1519	1551	1596	1660
45-49	880	947	1016	1084	1143	1190	1224	1245	1258	1271	1289	1310	1337	1367	4396	1424
50-54	570	615	665	719	777	837	901	968	1032	1089	1134	1168	1188	1202	1216	1233
55-59	394	412	434	460	491	529	571	618	669	723	780	839	903	964	1018	1061
60-64	309	312	319	328	338	352	369	388	412	440	475	513	556	602	651	704
65-69	264	262	260	258	258	260	263	269	277	286	298	313	330	351	375	406
70-74	198	203	205	206	205	203	202	201	200	200	202	205	210	217	225	234
75+	198	200	205	210	215	220	225	228	231	234	236	237	239	240	243	246
Female, Total	####	####	####	####	####	####	####	####	####	####	####	####	####	####	####	####
0-4	5026	5070	5139	5234	5358	5520	5789	6070	6360	6659	6963	7271	7582	7893	8206	8520
5-9	4387	4479	4580	4689	4807	4923	4969	5038	5133	5255	5414	5680	5958	6246	6541	6842
10-14	3910	4018	4110	4194	4276	4363	4454	4555	4664	4781	3898	4944	5014	5108	5230	5389
15-19	3141	3317	3481	3632	3767	3889	3998	4090	4173	4255	4341	4433	4533	4642	4760	4877
20-24	2200	2350	2531	2730	2930	3116	3291	3454	3605	3740	3681	3969	4061	4145	4226	4313
25-29	1811	1860	1910	1973	2059	2177	2325	2505	2702	2900	3086	3260	3422	3571	3706	3827
30-34	1590	1628	1665	1703	1744	1788	1836	1886	1948	2034	2151	2298	2476	2672	2868	3052
35-39	1347	1395	1440	1485	1527	1566	1603	1640	1678	1718	1762	1810	1860	1922	2006	2122
40-44	1073	1123	1174	1225	1274	1322	1368	1414	1457	1499	1537	1574	1611	1649	1689	1733
45-49	797	851	901	948	997	1046	1095	1145	1194	1242	1289	1335	1379	1422	1463	1501
50-54	497	544	598	656	714	768	820	868	914	961	1008	1056	1104	1153	1199	1244
55-59	337	352	373	400	432	470	515	566	621	676	727	777	822	866	911	956
60-64	294	293	292	294	299	309	324	343	367	397	433	474	521	572	623	670
65-69	270	267	264	262	260	258	257	257	258	263	272	285	302	323	350	381
70-74	234	233	231	227	224	221	218	216	214	212	211	210	210	211	215	224
75+	248	259	268	277	284	290	295	298	300	302	303	303	303	303	304	303

Refer to midyear population (at June 30 of each year.)

Source: 1994 Multi-Subject Household Survey, OPS

Table 2.5 POPULATION DISTRIBUTION BY SEX AND FIVE YEAR AGE GROUPS, 1958, 1967, 1973, 1980 & 1988.

Age Group	Year				
	1958	1967	1973	1980	1988
Both Sexes	13,761	18,925	24,135	30,873	43,380
0-4	2,665	...	4,631	6,502	8,651
5-9	2,115	...	3,899	5,023	7,609
10-14	1,485	...	3,088	4,054	5,876
15-19	928	...	2,764	2,956	4,085
20-24	837	...	2,045	2,601	3,510
25-29	905	...	1,511	2,225	3,027
30-34	811	...	935	1,779	2,656
35-39	773	...	861	1,136	2,187
40-44	585	...	789	819	1,492
45-49	591	...	727	809	971
50-54	432	...	716	699	743
55-59	421	...	640	664	680
60-64	409	...	512	642	635
65-69	263	...	348	423	544
70-74	222	...	252	244	373
75+	319	...	371	297	341
Unknown	-	...	46	-	-
Male, Total	7,080	9,658	12,335	15,851	22,181
0-4	1,346	...	2,437	3,377	4,423
5-9	1,162	...	2,023	2,661	3,884
10-14	782	...	1,550	2,117	3,055
15-19	452	...	1,379	1,434	2,104
20-24	411	...	1,070	1,223	1,686
25-29	462	...	741	1,142	1,520
30-34	421	...	489	930	1,348
35-39	386	...	429	608	1,205
40-44	294	...	427	436	758
45-49	317	...	358	409	549
50-54	201	...	357	376	386
55-59	201	...	328	332	359
60-64	231	...	263	359	313
65-59	151	...	159	212	255
70-74	120	...	113	107	183
75+	143	...	182	128	153
Unknown	-	...	30	-	-
Female, total	6,681	9,267	11,800	15,022	21,199
0-4	1,319	...	2,194	3,125	4,228
5-9	953	...	1,876	2,362	3,725
10-14	703	...	1,538	1,937	2,821
15-19	476	...	1,385	1,522	1,981
20-24	426	...	975	1,378	1,824
25-29	443	...	770	1,083	1,507
30-34	390	...	446	849	1,308
35-39	387	...	432	528	982
40-44	291	...	362	383	734
45-49	274	...	369	400	422
50-54	231	...	359	323	357
55-59	220	...	312	332	321
60-64	178	...	249	283	322
65-69	112	...	189	211	289
70-74	102	...	139	137	190
75+	176	...	189	169	188
Unknown	-	...	16	-	-

... not available

Notes: 1. Figures for 1958 indicate the Marshallese population born in Marshall Islands. Others born elsewhere numbered 402.

2. Figures for 1967 are actual counts collected by Peace Corps, and figures for 1973 are actual counts of 1973 TTPI Census.

Sources: - Census of the Trust Territory of the Pacific Islands (TTPI), 1958 (prepared by the High Commissioner of the TTPI, June, 1959); 1973 Population of TTPI

- 1980 Census of Population, TTPI, US Bureau of Census

- 1988 Census of Population and Housing

Table 2.6 LAND AREA AND POPULATION DENSITY BY ATOLLS AND ISLANDS
(Population per square mile)

Atoll/Island	1958		1967		1973		1980		1988	
	Land area (sq. mile)	Population a/ Density	Population b/ Density	Land area (sq. mile) d/	Population b/ Density	Population b/ Density	Land area (sq. mile) d/	Population c/ Density	Population d/ Density	Population d/ Density
Marshall Island	61.00 a/	14163	18,799	70.07	25,045	357	30,873	441	43,380	619
Ailinglaplap	4.93	1,288	1,195	5.67	1,100	194	1,385	244	1,715	302
Aituk	1.80	419	384	2.07	335	162	413	200	488	236
Arno	4.36	1,037	1,273	5.00	1,120	224	1,487	297	1,656	332
Aur	1.89	241	361	2.17	300	138	444	205	438	202
Bikini	2.02	-	-	2.32	75	32	-	-	10	4
Ebon	1.93	819	836	2.22	740	333	887	400	741	334
Enewetak	1.97	-	-	2.26	-	-	542	240	715	316
Jabat	0.19	-	-	0.22	70	318	72	327	112	509
Jaluit	3.81	1,098	1,113	4.38	925	211	1,450	331	1,709	390
Kili	0.31	267	309	0.36	360	1,000	489	1,358	602	1,672
Kwajalein	5.51	1,284	3,540	6.33	5,469	864	6,624	1,632*	9,311	2,357*
Lae	0.49	165	131	0.56	154	275	237	423	319	570
Lib	0.31	44	142	0.36	142	458	272	98	115	319
Likiep	3.46	636	184	3.97	430	124	102	481	121	482
Majuro	3.26	3,415	5,249	3.75	10,290	2,744	11,791	3,144	19,664	5,244
Maloelap	3.30	454	494	3.79	432	114	614	162	796	210
Mejit	0.63	346	320	0.72	271	376	325	451	445	618
Mili	5.36	412	582	6.15	538	87	763	124	854	139
Namorik	0.93	523	547	1.07	431	403	617	577	814	761
Namu	2.10	482	597	2.42	493	204	654	270	801	331
Rongelap	2.67	264	189	3.07	165	54	235	77	-	-
Ujae	0.63	167	191	0.72	209	290	309	429	448	622
Ujelang	0.59	172	251	0.67	342	510	-	-	-	-
Utrik	0.82	198	269	0.94	217	231	336	357	409	435
Wothe	1.45	71	-	1.67	61	37	85	51	90	54
Wotje	2.75	361	396	3.16	425	134	535	169	646	204
Not stated	3.53	-	-	4.05	19	-	-	-	-	-

* United States Army Kwajalein Atoll (USAKA) area excluded from density calculation.

Sources: a/ Census of the Trust Territory of the Pacific Islands, 1958 (prepared by the High Commissioner of the TTPI, Agana Guam, June 1959)

b/ Trust Territory of the Pacific Islands, Bulletin of Statistics, Vol III, No. 2, 1973

c/ 1980 Census of Population, U.S. Bureau of the Census

Table 2.7 URBAN AND RURAL POPULATION DENSITIES, 1958, 1967, 1973, 1980 & 1988

Urban/Rural	Land Area (Sq. mile)		Population per Sq. mile		Land Area (Sq. mile)		Population per Sq. mile		Land Area (sq. mile)		Population per sq. mile	
	1958 & 1967	1958	1967	1973 & 1980	1973	1980	1973 & 1980	1973	1980	1973 & 1980	1973	1980
MARSHALL ISLANDS	61.00	232	308	70.05	357	441	70.07	619				
URBAN	3.38	1,366	2,534	3.87	3,983	4,641	3.89	7,195				
Majuro Atoll	3.26	1,048	1,610	3.75	2,744	3,144	3.75	5,244				
- DUD	0.44	6,055	9,305	0.51	15,692	16,829	0.51	28,724				
- Others	2.82	266	410	3.24	706	990	3.24	1,548				
Kwajalein Atoll												
- Ebeye	0.12	10,025	27,642	0.12	42,700	51,408	0.14	59,457				
RURAL	57.62	166	178	66.18	146	195	66.18	233				

Sources: - Census of the Trust Territory of the Pacific Islands (TTPi), 1958 (prepared by the High Commission
- Statistical Bulletin, Vol III, No. 2, 1973
- 1980 Census of Population, U.S. Bureau of Census
- 1988 Census of Population and Housing

Table 2.8 URBAN POPULATION BY PLACE, SEX AND BROAD AGE GROUP, 1988.

Place	Both sexes	Male					Female				
		Total	0-4 yrs	-14 yrs	-64 yrs	65+ yrs	Total	0-4 yrs	-14 yrs	-64 yrs	65+ yrs
Majuro atoll	19664	9990	1871	2866	4980	273	9674	1753	2699	4893	329
DUD	14649	7443	1399	2132	3709	203	7206	1307	1979	3668	252
Darrit	6813	3489	660	1032	1708	89	3324	573	935	1700	116
Uliga	2144	1057	171	270	587	29	1087	195	303	543	46
Delap	5692	2897	568	830	1414	85	2795	539	741	1425	90
Others	5015	2547	472	734	1271	70	2468	446	720	1225	77
Jelter	24	14	3	5	5	1	10	1	3	4	2
Rongrong	245	129	4	21	104	-	116	5	30	81	-
Kalalen	19	10	2	2	5	1	9	2	1	5	1
Biken	8	4	1	-	3	-	4	-	3	1	-
Enemanet	6	5	3	1	1	-	1	-	-	1	-
Denmeo	7	3	-	2	1	-	4	-	4	-	-
Bokmej	14	7	3	1	3	-	7	1	3	3	-
Didej	16	8	-	-	8	-	8	3	1	3	1
Kora	9	3	-	1	2	-	6	2	-	4	-
Ejit	170	88	21	26	38	3	82	9	32	40	1
Enearmij	3	3	-	-	3	-	-	-	-	-	-
Rairok	2021	1012	190	271	522	29	1009	175	288	516	30
Ajeltake	556	274	49	87	124	14	282	54	92	124	12
Woja	224	117	21	37	56	3	107	14	35	56	2
Arrak	118	67	7	28	32	-	51	9	11	28	3
Laura	1575	803	168	252	364	19	772	171	217	359	25
Kwajalein atoll											
Ebeye	8324	4148	842	1256	1972	78	4176	874	1261	1953	88

Source: 1988 Census of Population and Housing, OPS

Table 2.9 POPULATION BY ATOLLS/ISLANDS, 1958, 1967, 1973, 1980 & 1988.

Atoll/Island	Population				
	1958	1967	1973	1980	1988
Marshall Islands	14,163	18,799	25,045	30,873	43,380
Ailinglaplap	1,288	1,195	1,100	1,385	1,715
Ailuk	419	384	335	413	488
Arno	1,037	1,273	1,120	1,487	1,656
Aur	241	361	300	444	438
Bikini	a/	a/	75	a/	10
Ebon	819	836	740	887	741
Enewetak	b/	b/	b/	542	715
Jabat	-	-	70	72	112
Jaluit	1,098	1,113	925	1,450	1,709
Kili	267	309	360	489	602
Kwajalein c/	1,284	3,540	5,469	6,624	9,311
Lae	165	131	154	237	319
Lib	44	142	98	98	115
Likiep	636	430	406	481	482
Majuro	3,415	5,249	10,290	11,791	19,664
Maloelap	454	494	432	614	796
Mejit	346	320	271	325	445
Mili	412	582	538	763	854
Namorik	523	547	431	617	814
Namu	482	597	493	654	801
Rongelap	264	189	165	235	-
Ujae	167	191	209	309	448
Ujelang	172	251	342	d/	-
Utrik	198	269	217	336	409
Wotho	71	-	61	85	90
Wotje	361	396	425	535	646
Not stated	-	-	19	-	-

a/ Bikini people relocated to Kili Island

b/ Enewetak people relocated to Ujelang Atoll

c/ Excluding residents of Kwajalein Missile Range

d/ Enewetak people returned to Enewetak Atoll

Sources: - Quarterly Bulletin of Statistics, Trust Territory of the Pacific Islands, Vol. III., No. 2

- 1980 Census of Population, US Bureau of Census

- 1988 Census of Population and Housing, OPS

Table 3.1 TOTAL FERTILITY RATE AND AGE SPECIFIC FERTILITY RATE, 1959-1988.

Age group	Census, 1973			Census, 1980			Census, 1988		
	Period of estimate			Period of estimate			Period of estimate		
	1959/63	1964/68	1969/73	1966/70	1971/75	1976/80	1977/78	1982/83	1988
Total Fertility Rate (TFR)	7.920	8.720	8.420	8.140	7.920	7.880	7.510	7.390	7.230
Age Specific Fertility Rate (ASFR)									
15-19 years	0.171	0.161	0.126	0.147	0.149	0.155	0.121	0.137	0.162
20-24 years	0.338	0.345	0.322	0.346	0.324	0.332	0.360	0.368	0.391
25-29 years	0.364	0.398	0.380	0.377	0.363	0.356	0.382	0.385	0.347
30-34 years	0.316	0.383	0.374	0.344	0.317	0.305	0.307	0.290	0.246
35-39 years	0.238	0.274	0.284	0.241	0.238	0.242	0.247	0.202	0.182
40-44 years	0.114	0.135	0.130	0.124	0.131	0.133	0.063	0.075	0.089
45-49 years	0.044	0.049	0.070	0.049	0.062	0.053	0.023	0.021	0.029

An Age Specific Fertility Rate(ASFR) is calculated as the number of births in a year to mothers of a specific age group (or per 1000 women) of the same age at midyear.

The Total Fertility Rate(TFR) is a summary measure independent of the age and sex composition of a population. It represents the average number of children a group of women would have by the end of their reproductive life.

Sources: Trust Territory of the Pacific Islands, Bulletin of Statistics Vol. III, 1973
 1980 Census of Population, US Bureau of the Census and OPS
 1988 Census of Population and Housing, OPS

Table 3.2 INDIRECT ESTIMATES OF INFANT MORTALITY RATES (IMR).

Both Sexes IMR	Reference period	Male		Female	
		IMR	Reference period	IMR	Reference period
85	April 1969	70	June 1979	58	August 1979
79	October 1979	74	Feb 1982	61	Mar-82
68	Feb 1972	70	July 1984	63	July 1984
64	July 1979	66	July 1986	60	July 1986
68	Feb 1982				
66	July 1984				
63	July 1986				

Note: The Infant Mortality Rate(IMR) is the number of deaths of infants under one year of age to the number of live births occurring that year. IMR is expressed as number per thousand of live births.

Sources: Susan J Levy and Heather Booth: "Infant mortality in the Marshall Islands "1988
 1988 Census of Population and Housing, OPS

Table 3.3 NUMBER OF REGISTERED LIVE BIRTHS, 1986-1997.

Atolls/Islands	1986	1987	1988	1989	1990	1991	1992	1993	1994*	1995	1996	1997
All atolls/islands	1,454	1,727	1,587	1,554	1,555	1,266	1,195	1,249	1,386	1,476	1,500	1,607
Ailinglaplap	39	64	57	43	45	17	31	22	29	24	41	39
Ailuk	14	23	12	13	16	4	4	11	14	10	14	13
Arno	33	37	43	37	39	18	23	22	20	27	34	30
Aur	15	9	16	9	10	3	10	8	7	5	3	5
Ebon	19	24	18	19	20	7	12	6	12	2	3	5
Enewetak	7	10	6	13	4	-	10	5	9	1	5	4
Jabat	4	5	6	3	1	-	1	-	-	1	-	1
Jaluit	28	42	50	34	42	17	15	16	19	24	28	26
Kili	9	11	19	9	4	5	1	3	10	5	10	5
Kwajalein	366	405	336	364	410	328	277	281	346	352	336	361
Lae	10	11	10	2	10	1	1	2	8	4	8	3
Lib	6	1	2	4	-	-	1	4	1	-	-	0
Likiep	2	7	8	4	5	-	3	1	-	5	5	3
Majuro	788	903	892	875	844	795	735	826	846	943	942	1056
Maloelap	16	29	16	24	16	10	4	8	9	4	12	7
Mejit	7	11	11	8	7	6	5	1	3	1	-	0
Mili	11	17	14	18	17	11	12	15	15	17	15	13
Namorik	32	67	27	21	22	13	12	13	10	12	-	7
Namu	7	12	12	17	13	6	10	1	3	9	7	8
Rongelap	-	-	-	-	-	-	-	-	-	-	-	0
Ujae	12	18	7	4	10	9	5	-	3	8	8	7
Ujelang	2	-	-	-	-	-	-	-	-	-	-	0
Uterik	15	7	10	11	6	8	13	1	5	3	10	3
Wotho	-	3	1	6	1	1	1	1	-	1	2	0
Wotje	12	11	14	6	13	2	9	2	17	18	17	11
Unknown	-	-	-	10	-	5	-	-	-	-	-	-

* There is still a significant underregistration of births in RMI. (The estimated crude birth rate in the 1994 Household Survey of Population and Housing was 43 per 1000 population.)

Source : Planning and Vital Statistics Division, Ministry of Health and Environment.

Table 3.4 NUMBER OF REGISTERED LIVE BIRTHS BY AGE GROUP OF MOTHER, 1990-1997.

Age group of mother	1990	1991	1992	1993	1994*	1995	1996	1997
All age groups	1555	1266	1195	1249	1386	1476	1500	1607
Under 15 years	4	4	1	1	2	-	-	1
15 - 19 years	250	268	248	267	272	284	264	260
20 - 24 years	545	453	418	451	513	531	551	520
25 - 29 years	392	268	297	298	330	363	363	410
30 - 34 years	227	175	149	139	171	196	214	269
35 - 39 years	98	71	62	75	73	78	82	111
40 - 44 years	38	25	20	16	21	23	23	33
45 - 49 years	1	2		2	4	1	3	3

* There is still a significant underregistration of births in RMI. (The estimated crude birth rate in the 1994 Household Survey of Population and Housing was 43 per 1000 population.)

Source: Planning and Vital Statistics Division, Ministry of Health and Environment.

Table 3.4 NUMBER OF REGISTERED BIRTHS BY AGE GROUP OF MOTHER, 1988-95

Age group of mother	1989	1990	1991	1992	1993	1994*	1995*
All age groups	1554	1555	1266	1195	1249	1386	1341
Under 15 years	5	4	4	1	1	2	-
15 - 19 years	232	250	268	248	267	272	263
20 - 24 years	566	545	453	418	451	513	486
25 - 29 years	384	392	268	297	298	330	326
30 - 34 years	231	227	175	149	139	171	177
35 - 39 years	109	98	71	62	75	73	68
40 - 44 years	25	38	25	20	16	21	20
45 - 49 years	2	1	2	.	2	4	1

Source: Planning and Vital Statistics

Table 3.6 NUMBER OF REGISTERED DEATHS BY CAUSE OF DEATH AND SEX, 1993 - 1997 (conclusion.)

Cause of Death	1993			1994*			1995			1996			1997		
	Both sexes	Male	Female	Both sexes	Male	Female	Both sexes	Male	Female	Both sexes	Male	Female	Both sexes	Male	Female
Pulmonary Tuberculosis	6	3	3	4	2	2	6	1	5	-	-	-	6	5	1
Reactive Airway Disease	-	-	-	-	-	-	1	-	1	-	-	-	-	-	-
Renal Failure	1	1	-	3	2	1	4	-	4	-	-	-	4	2	2
Renal Failure - Acute	-	-	-	-	-	-	-	-	-	-	-	-	-	-	-
Renal Failure - Hepatic	-	-	-	-	-	-	-	-	-	-	-	-	-	-	-
Renal failure Secondary to Obstruction	-	-	-	-	-	-	-	-	-	-	-	-	-	-	-
Renal Failure - Hepato	-	-	-	-	-	-	-	-	-	-	-	-	-	-	-
Renal Failure - Severe	-	-	-	-	-	-	-	-	-	-	-	-	-	-	-
Respiratory Arrest	-	-	-	-	-	-	-	-	-	-	-	-	-	-	-
Respiratory Arrest - Acute	-	-	-	-	-	-	-	-	-	-	-	-	-	-	-
Respiratory Distress Syndrome	-	-	-	1	1	-	1	1	-	-	-	-	-	-	-
Reyes Syndrome	-	-	-	1	-	1	-	-	-	-	-	-	-	-	-
Raptured Abdonimal Arotic Aneurysm	-	-	-	1	1	-	-	-	-	-	-	-	-	-	-
Respiratory Failure - Acute	-	-	-	-	-	-	-	-	-	-	-	-	-	-	-
Respiratory Failure - Central	-	-	-	-	-	-	-	-	-	-	-	-	-	-	-
Salmonellosis - Overwhelming	-	-	-	-	-	-	-	-	-	-	-	-	-	-	-
Sacoma	1	-	1	-	-	-	-	-	-	-	-	-	-	-	-
Senility	-	-	-	1	1	-	-	-	-	-	-	-	-	-	-
Sepsis	31	12	19	16	11	5	16	8	8	27	13	14	24	7	17
Sepsis Neonatorum	-	-	-	2	1	1	-	-	-	-	-	-	-	-	-
Sepsis Overwhelming	-	-	-	-	-	-	-	-	-	-	-	-	-	-	-
Sepsis with Gangrene - Overwhelming	-	-	-	-	-	-	-	-	-	-	-	-	-	-	-
Sepsis - Severe	-	-	-	-	-	-	-	-	-	-	-	-	-	-	-
Septic Shock	-	-	-	3	2	1	5	4	1	2	1	1	6	5	1
Septicemia	-	-	-	14	10	4	20	11	9	14	9	5	4	1	3
Septicemia Shock	-	-	-	-	-	-	-	-	-	-	-	-	7	3	4
Severe Burn (accident)	-	-	-	-	-	-	-	-	-	3	-	3	-	-	-
Severe Head Injury	-	-	-	-	-	-	-	-	-	-	-	-	-	-	-
Shock - Increased Intra-Cranial Pressure	-	-	-	-	-	-	-	-	-	-	-	-	-	-	-
Sniffing of Petroleum	-	-	-	-	-	-	-	-	-	1	1	-	-	-	-
Stroke	-	-	-	-	-	-	1	1	-	1	-	1	2	2	-
Submandibular Mass	-	-	-	-	-	-	-	-	-	1	1	-	-	-	-
Suffocation (Accident)	-	-	-	3	1	2	-	-	-	1	1	-	-	-	-
Suicide	9	8	1	10	10	-	8	8	-	8	8	-	9	8	1
Synovial Sarcoma	-	-	-	-	-	-	-	-	-	1	1	-	-	-	-
Traumatic Injury (Accident)	-	-	-	1	1	-	1	1	-	-	-	-	-	-	-
Thrombo Embolism Mesenteric, Portal	-	-	-	-	-	-	-	-	-	-	-	-	-	-	-
Tuberculosis	-	-	-	-	-	-	-	-	-	6	2	4	1	1	-
Valvular Heart Disease	-	-	-	-	-	-	-	-	-	1	1	-	-	-	-
Ventricular Arrythemia	-	-	-	-	-	-	-	-	-	-	-	-	-	-	-
Wilm's Tumor (R) Kidney	-	-	-	-	-	-	1	1	-	-	-	-	-	-	-
Upper GI Bleeding	-	-	-	-	-	-	-	-	-	-	-	-	2	1	1
Unclassified	13	6	7	16	7	9	21	15	6	14	6	8	17	10	7

* There is still a significant underregistration of deaths in RMI. (The estimated crude birth rate in the 1994 Household Survey of Population and Housing was 43 per 1000 population.)

Source : Planning and Vital Statistics Division, Ministry of Health and Environment.

Table 3.7 NUMBER OF REGISTERED INFANT DEATHS BY CAUSE OF DEATH AND BY SEX, 1993- 1997.

Cause of Death	1993			1994*			1995			1996			1997		
	Both sexes	Male	Female	Both sexes	Male	Female	Both sexes	Male	Female	Both sexes	Male	Female	Both sexes	Male	Female
All causes	33	14	19	29	15	14	26	16	10	40	26	14	49	17	32
Anencephaly	-	-	-	-	-	-	2	-	2	-	-	-	-	-	-
Anoxia	-	-	-	-	-	-	-	-	-	-	-	-	1	-	1
Asphyxia	-	-	-	1	1	-	3	3	-	3	2	1	1	1	-
Asphyxia Neonatorum	-	-	-	-	-	-	-	-	-	-	-	-	-	-	-
Aspiration	1	-	1	-	-	-	-	-	-	-	-	-	3	-	3
Aspiration Meconium	-	-	-	2	-	2	-	-	-	-	-	-	-	-	-
Aspiration Pneumonia	-	-	-	-	-	-	-	-	-	-	-	-	-	-	-
Bleeding Peptic Shock	-	-	-	-	-	-	-	-	-	-	-	-	1	-	1
Bronchiolitis - Severe	-	-	-	-	-	-	-	-	-	-	-	-	-	-	-
Cerebral Anoxia	-	-	-	-	-	-	-	-	-	1	1	-	-	-	-
Cerebral Hemorrhage	1	-	1	-	-	-	-	-	-	-	-	-	-	-	-
Congenital Abnormalities	2	2	-	-	-	-	-	-	-	-	-	-	-	-	-
Congenital Pulmonary	-	-	-	-	-	-	-	-	-	-	-	-	-	-	-
Congenital Pulmonary Hypoplasia	-	-	-	-	-	-	-	-	-	-	-	-	-	-	-
Congenital Heart Disease	-	-	-	1	-	1	-	-	-	-	-	-	2	-	2
Congestive Heart Failure	-	-	-	-	-	-	-	-	-	1	-	1	-	-	-
Congenital Hydrocephalus	-	-	-	-	-	-	-	-	-	-	-	1	1	-	-
Cord Accident	-	-	-	-	-	-	2	-	2	-	-	-	2	2	-
Cord Coil	-	-	-	-	-	-	-	-	-	1	1	-	-	-	-
Cord Prolapse	-	-	-	-	-	-	1	-	1	1	1	-	-	-	-
Dehydration	-	-	-	3	2	1	-	-	-	1	-	1	2	1	1
Dehydration Secondary to diarrhea severe	2	2	-	-	-	-	-	-	-	-	-	-	-	-	-
Fetal Asphyxia	-	-	-	-	-	-	-	-	-	-	-	-	1	-	1
Electrolyte Imbalance - Acidosis	-	-	-	-	-	-	-	-	-	-	-	-	-	-	-
Electrolyte Imbalance - secondary to Diarrhea	-	-	-	-	-	-	2	2	-	-	-	-	-	-	-
Hemophilus Influenza Meningitis	-	-	-	3	2	1	-	-	-	-	-	-	-	-	-
Hypothermia / Apnea	-	-	-	-	-	-	-	-	-	-	-	-	-	-	-
Hypoxia	-	-	-	-	-	-	-	-	-	1	1	-	2	2	-
Internal Injuries (Fall)	-	-	-	-	-	-	-	-	-	-	-	-	-	-	-
Intracranial Hemorrhage	-	-	-	-	-	-	-	-	-	-	-	-	-	-	-
Intrauterine Anoxia	-	-	-	1	1	-	-	-	-	-	-	-	-	-	-
Intraventricular Hemorrhage	-	-	-	-	-	-	-	-	-	-	-	-	-	-	-
Malnutrition	3	1	2	-	-	-	4	3	1	4	2	2	1	1	-
Meconium Aspiration	2	-	2	-	-	-	-	-	-	1	-	1	-	-	-
Meningitis	-	-	-	-	-	-	-	-	-	-	-	-	1	1	-
Peritonitis	-	-	-	-	-	-	-	-	-	-	-	-	-	-	-
Perinatal Asphyxia	-	-	-	1	1	-	-	-	-	-	-	-	-	-	-
Pneumonia	-	-	-	1	-	1	1	-	1	-	-	-	3	1	2
Pneumonia Aspiration	7	3	4	-	-	-	-	-	-	-	-	-	-	-	-
Prematurity	11	4	7	7	2	5	7	6	1	13	8	5	13	5	8
Pulmonary Tuberculosis	-	-	-	-	-	-	-	-	-	-	-	-	-	-	-
Pulmonary Arrest	-	-	-	-	-	-	-	-	-	-	-	-	-	-	-
Respiratory Arrest	-	-	-	-	-	-	-	-	-	-	-	-	-	-	-
Respiratory Distress Syndrome	-	-	-	-	-	-	-	-	-	-	-	-	-	-	-
Respiratory Failure - Central	-	-	-	7	6	1	-	-	-	-	-	-	-	-	-
Sepsis	4	2	2	-	-	-	2	1	1	8	5	3	10	1	9
Sepsis Neonatorum	-	-	-	-	-	-	-	-	-	-	-	-	-	-	-
Sepsis Overwhelming	-	-	-	-	-	-	-	-	-	-	-	-	-	-	-
Septic Shock	-	-	-	-	-	-	-	-	-	-	-	-	2	1	1
Septicemia	-	-	-	2	-	2	-	-	-	2	2	-	-	-	-
Streptococcal Meningitis	-	-	-	-	-	-	-	-	-	-	-	-	-	-	-
Submandibular Mass	-	-	-	-	-	-	-	-	-	1	1	-	-	-	-
Suffocation (accident)	-	-	-	-	-	-	-	-	-	1	1	-	-	-	-
Unclassified	-	-	-	-	-	-	2	1	1	1	1	-	3	-	3

*Due to underregistration, the recorded number of infant deaths is lower than the number derived from the estimated rate of 63 per 1000 live births in the 1994 Household Survey of Population and Housing.

Source: Planning and Vital Statistics Division, Ministry of Health and Environment

Table 4.1 MARSHALL ISLANDS TOTAL NUMBER OF HOUSEHOLDS AND AVERAGE HOUSEHOLD SIZE, 1958, 1967, 1973, 1980 & 1988

Year	Number of households	Persons per household
1958	2,049	6.8
1967
1973	2,987	8.4
1980	3,871	8.0
1988	4,923	8.8

... not available

Sources: Census of the Trust Territory of the Pacific Islands, 1958 (prepared by the High Commissioner of the TTPI, June, 1959)
 Quarterly Bulletin of Statistics, TTPI, Vol. III, No. 2, 1980
 1988 Census of Population and Housing

Table 4.2 NUMBER OF HOUSEHOLDS AND AVERAGE HOUSEHOLD SIZE BY ATOLLS/ISLANDS, 1980 and 1988

Atoll/Island	1980 Census		1988 Census	
	Number of households	Persons per household	Number of households	Persons per household
All atolls/islands	3871	8.0	4923	8.8
Ailinglaplap	156	8.9	200	8.6
Ailuk	53	7.8	72	6.8
Arno	231	6.4	188	8.8
Aur	57	7.8	60	7.3
Bikini	-	-	3	3.3
Ebon	121	7.3	90	8.2
Enewetak	87	6.2	103	6.9
Jabat	11	6.6	17	6.6
Jaluit	207	7.0	203	7.9
Kili	73	6.7	81	7.4
Kwajalein	652	10.2	950	9.8
Lae	29	8.2	25	12.8
Lib	15	6.5	16	7.2
Likiep	63	7.6	71	6.8
Majuro	1,510	7.8	2,228	8.6
Maloelap	99	6.2	103	7.7
Mejit	38	8.6	48	9.3
Mili	104	7.3	98	8.7
Namorik	77	8.0	96	8.5
Namu	89	7.4	86	9.3
Rongelap	37	6.4	-	-
Ujae	37	8.4	37	12.1
Ujelang	-	-	-	-
Utrik	41	8.2	53	7.7
Wotho	11	7.7	16	5.6
Wotje	73	7.3	79	8.2

In the 1988 Census of Population and Housing, a total of 661 persons were in group quarters: 524 in Jaluit Atoll, and 37 in Kwajalein Atoll.

Sources : 1980 Census of Population, U.S. Bureau of the Census, and 1988 Census of Population and Housing, U.S. Bureau of the Census.

Table 4.3 HOUSEHOLDS ENGAGED IN SUBSISTENCE ACTIVITIES BY ATOLL AND TYPE OF ACTIVITY, 1988

Atoll / Island	Growing fooc	Producing copra	Breeding		Making	
			Fishing	livestock	handicrafts	Other
All atoll/islands						
Number	2,401	1,562	3,399	2,253	1,771	274
Percent	48.77	31.73	69.04	45.76	35.97	5.57
Ailinglaplap	131	173	164	98	110	3
Ailuk	57	66	67	56	64	1
Arno	179	180	184	184	154	-
Aur	48	53	55	42	56	-
Bikini	3	-	3	-	-	-
Ebon	69	79	64	36	38	1
Enewetak	43	3	85	37	9	2
Jabat	14	17	16	10	2	-
Jaluit	139	107	176	128	127	1
Kili	30	13	73	31	72	-
Kwajalein	67	16	588	111	110	196
Lae	23	23	25	24	12	-
Lib	12	7	9	11	6	-
Likiep	70	53	67	69	49	-
Majuro	997	243	1,287	924	600	66
Maloelap	87	92	94	86	79	1
Mejit	44	45	46	46	46	-
Mili	96	90	94	95	72	1
Namorik	88	85	80	87	52	-
Namu	55	68	57	29	60	1
Ujae	33	30	31	24	1	-
Utrik	43	40	45	44	4	-
Wotho	13	10	14	15	-	-
Wotje	60	69	75	66	48	1

Source : 1988 Census of Population and Housing, OPS

Table 4.3 HOUSEHOLDS BY ATOLLS/ISLANDS AND SOURCE OF DRINKING WATER, TOILET FACILITIES, SOURCE OF ENERGY FOR COOKING AND LIGHTING, 1988

Atolls/Islands	Source of drinking water				Toilet facilities				Source of energy for lighting				Source of energy for cooking								
	Piped (in)	Piped (out)	Rain Catchment	Well	Other	Flush toilet	Water seal	Pit latrine	None	Other	Electricity	Electricity (solar)	Kerosene	None	Other	Electricity	Gas	Kerosene	Fire woods	Other	
All atolls/islands	1440	1013	2101	267	102	2150	882	601	1213	77	2759	142	1777	225	20	1827	53	2353	680	10	
Ailinglaplap	-	2	177	8	13	4	32	22	140	2	10	1	188	1	-	7	5	114	74	-	-
Aiuk	-	-	26	44	2	1	16	7	45	3	5	2	65	-	-	-	-	46	26	-	-
Arno	-	-	149	38	-	4	9	11	164	-	4	3	180	1	-	2	2	114	70	-	-
Aur	-	1	45	7	7	3	6	27	24	-	2	-	58	-	-	1	-	24	35	-	-
Bikini	3	-	-	-	-	3	-	-	-	-	3	-	-	-	-	3	-	-	-	-	-
Ebon	-	1	73	12	4	1	18	15	47	9	6	-	82	2	-	-	-	60	30	-	-
Enewetak	-	2	101	-	-	3	98	-	2	-	3	3	97	-	-	-	-	102	1	-	-
Jabat	-	-	17	-	-	-	8	-	9	-	6	4	7	-	-	-	1	16	-	-	-
Jaluit	11	6	176	7	3	31	26	11	121	14	67	3	133	-	-	50	-	73	80	-	-
Kili	-	-	81	-	-	81	-	-	-	-	80	1	-	-	-	41	1	39	-	-	-
Kwajalein	500	320	116	5	9	785	43	30	79	13	786	57	11	92	4	615	12	318	4	1	-
Lae	-	-	24	1	-	-	4	6	15	-	4	-	-	21	-	-	-	19	6	-	-
Lib	-	-	16	-	-	-	-	10	6	-	1	-	15	-	-	-	-	8	8	-	-
Likiep	-	-	68	3	-	2	-	69	-	-	16	-	54	1	-	1	2	65	3	-	-
Majuro	923	679	536	36	54	1227	469	216	288	28	1740	16	455	5	12	1100	24	1043	54	7	-
Maloelap	1	-	80	21	1	-	39	7	56	1	3	1	99	-	-	1	1	80	21	-	-
Mejit	-	-	42	3	3	-	-	48	-	-	2	1	45	-	-	1	-	12	35	-	-
Mili	-	-	87	8	3	2	2	23	70	1	9	1	87	1	-	2	2	51	42	1	-
Namorik	2	1	81	10	2	1	64	7	20	4	1	1	94	-	-	1	1	53	40	1	-
Namu	-	-	61	25	-	-	2	12	71	1	-	-	-	86	-	-	-	14	71	-	-
Rongelap	-	-	-	-	-	-	-	-	-	-	2	-	35	-	-	-	-	15	22	-	-
Ujae	-	-	37	-	-	-	18	11	8	-	-	-	-	-	-	-	-	-	-	-	-
Ujelang	-	-	-	-	-	-	-	-	-	-	-	-	-	-	-	-	-	-	-	-	-
Utirik	-	-	38	15	-	1	3	26	23	-	11	42	-	-	-	2	-	43	8	-	-
Wotho	-	-	16	-	-	9	-	7	-	-	1	1	-	14	1	-	1	11	4	-	-
Wotje	-	-	54	24	1	1	16	43	18	1	2	1	72	1	3	-	-	33	46	-	-

Source: 1988 Census of Population and Housing, 1988, OPS

Table 4.4 HOUSEHOLDS BY ATOLLS/ISLANDS AND SOURCE OF DRINKING WATER, TOILET FACILITIES, SOURCE OF ENERGY FOR COOKING AND LIGHTING, 1988

Atolls/islands	Source of drinking water				Toilet facilities				Source of energy for lighting				Source of energy for cooking							
	Piped (in)	Piped (out)	Rain Catchment	Well	Other	Flush toilet	Water seal	Pit latrine	None	Other	Electricity	Electricity (solar)	Kerosene	None	Other	Electricity	Gas	Kerosene	Fire woods	Other
All atolls/islands	1440	1013	2101	267	102	2150	882	601	1213	77	2759	142	1777	225	20	1827	53	2353	680	10
Ailinglaplap	-	2	177	8	13	4	32	22	140	2	10	1	188	1	-	7	5	114	74	-
Aiuluk	-	-	26	44	2	1	16	7	45	3	5	2	65	-	-	-	-	46	26	-
Arno	-	1	149	38	-	4	9	11	164	-	4	3	180	1	-	2	2	114	70	-
Aur	-	1	45	7	7	3	6	27	24	-	2	-	58	-	-	1	-	24	35	-
Bikini	3	-	-	-	-	3	-	-	-	-	3	-	-	-	-	3	-	-	-	-
Ebon	-	1	73	12	4	1	18	15	47	9	6	-	82	2	-	-	-	60	30	-
Enewetak	-	2	101	-	-	3	98	-	2	-	3	3	97	-	-	-	1	102	1	-
Jabat	-	-	17	-	-	-	8	-	9	-	6	4	7	-	-	-	1	16	-	-
Jaluit	11	6	176	7	3	31	26	11	121	14	67	3	133	-	-	50	-	73	80	-
Kili	-	-	81	-	-	81	-	-	-	-	80	1	-	-	-	41	1	39	-	-
Kwajalein	500	320	116	5	9	785	43	30	79	13	786	57	11	92	4	615	12	318	4	1
Lae	-	-	24	1	-	-	4	6	15	-	4	-	-	21	-	-	-	19	6	-
Lib	-	-	16	-	-	-	-	10	6	-	1	-	15	-	-	-	-	8	8	-
Likiep	-	-	68	3	-	2	-	69	-	-	16	-	54	1	-	1	2	65	3	-
Maturo	923	679	536	36	54	1227	469	216	288	28	1740	16	455	5	12	1100	24	1043	54	7
Matolaelap	1	-	80	21	1	-	39	7	56	1	3	1	99	-	-	1	1	80	21	-
Mejit	-	-	42	3	3	-	-	48	-	-	2	1	45	-	-	1	1	12	35	-
Mili	-	-	87	8	3	2	2	23	70	1	9	1	87	1	-	2	2	51	42	1
Namorik	2	1	81	10	2	1	64	7	20	4	1	1	94	-	-	1	1	53	40	1
Namu	-	-	61	25	-	-	2	12	71	1	-	-	-	86	-	-	1	14	71	-
Rongelap	-	-	-	-	-	-	18	11	8	-	2	-	35	-	-	-	-	15	22	-
Ujae	-	-	37	-	-	-	-	-	-	-	-	-	-	-	-	-	-	-	-	-
Ujelang	-	-	-	-	-	-	-	-	-	-	-	-	-	-	-	-	-	-	-	-
Utirik	-	-	38	15	-	1	3	26	23	-	11	42	-	-	2	-	-	43	8	-
Wotho	-	-	16	-	-	-	9	7	7	-	2	1	-	14	1	-	1	11	4	-
Wotje	-	-	54	24	1	1	16	43	18	1	2	1	72	1	3	-	-	33	46	-

Source: 1988 Census of Population and Housing, 1988, OPS

Table 5.1 PUBLIC AND PRIVATE PRIMARY SCHOOLS, TEACHERS AND ENROLLMENT BY ATOLL / ISLAND: 1989/90-1996/97

Atoll/Island	Number of schools								Number of teachers								Number of students											
	89/90	90/91	1/92	2/93	3/94	4/95	5/96	6/97	89/90	90/91	91/92	92/93	93/94	94/95	95/96	96/97	89/90	90/91	91/92	92/93	93/94	94/95	95/96	96/97				
Both public & private schools	93	96	100	103	102	102	103	103	514	481	513	534	545	664	609	608	11155	10935	12242	12576	13044	13313	12169	12518				
Ailinglaplap	9	9	10	11	12	12	12	12	35	33	36	36	37	45	37	37	561	512	587	607	660	650	615	629				
Ailuk	2	3	4	4	3	3	3	3	8	6	12	12	12	13	12	12	150	157	234	171	158	191	169	169				
Arno	11	11	12	12	12	12	12	12	31	31	35	31	33	31	34	33	589	562	619	636	634	725	651	657				
Aur	2	2	2	2	2	2	2	4	6	10	7	7	6	10	9	17	136	140	118	114	125	152	148	148				
Ebon	3	3	3	3	3	3	3	9	13	13	13	14	13	18	14	65	274	286	294	337	317	327	290	290				
Enewetak	2	2	2	2	2	2	1	12	11	8	9	7	5	15	18	105	221	174	188	155	265	306	261	295				
Jabat	1	1	1	1	1	1	1	2	1	2	2	2	3	2	4	6	28	45	36	43	47	57	50	50				
Jaluit	10	10	10	10	10	10	10	9	25	27	25	28	27	31	27	23	519	567	561	606	545	624	563	563				
Kili	1	2	2	1	1	1	2	2	7	9	11	7	7	14	7	7	143	154	213	148	159	223	224	224				
Kwajalein	9	10	10	10	10	9	9	3	95	96	87	95	102	117	140	89	2210	2131	2697	2651	2792	2623	2469	2469				
Lae	1	1	1	1	1	1	1	1	4	2	4	4	5	6	6	6	96	102	98	97	100	110	118	118				
Lib	1	1	1	1	1	1	1	1	2	2	2	2	2	2	2	2	39	45	38	44	43	47	52	52				
Likiep	3	3	3	3	3	3	3	3	8	8	8	11	10	13	10	10	150	158	165	180	172	202	176	176				
Majuro	15	15	17	19	19	19	19	8	198	166	189	200	205	256	206	119	4402	4303	4720	5092	5260	5141	4547	4547				
Maloelap	5	5	5	5	5	5	5	5	13	11	13	14	13	14	15	15	244	220	249	263	281	264	260	260				
Mejit	1	1	1	1	1	1	1	1	5	6	6	5	7	6	7	7	131	131	135	113	140	165	166	166				
Mili	5	5	5	5	5	5	5	5	9	8	10	12	11	11	11	11	257	252	267	281	290	327	264	264				
Namorik	1	1	1	1	1	1	1	1	9	11	9	8	9	7	9	9	261	279	258	270	218	246	252	252				
Ronglap/Mejatto							1	4	-	-	-	-	-	-	-	4	16								102	102		
Namu	5	5	5	5	5	5	5	1	13	13	15	13	14	19	18	4	287	266	285	291	288	264	283	283				
Ujae	1	1	1	1	1	1	1	1	4	2	4	6	4	7	5	5	119	119	151	141	148	193	147	147				
Ujelang	-	-	-	-	-	-	-	1	-	-	-	-	-	-	-	2	-	-	-	-	-	-	-	-	-			
Utirik	1	1	1	1	1	1	1	1	4	3	5	6	6	5	2	8	109	112	83	100	123	114	89	89				
Wotho	1	1	1	1	1	1	1	1	2	2	2	2	2	5	2	2	32	46	51	49	36	42	48	48				
Wotje	4	4	4	4	4	4	4	3	13	14	11	14	14	16	12	12	229	220	246	236	279	241	269	269				
Public schools	73	75	74	77	75	75	75	75	357	333	328	337	346	446	432	431	8623	8298	8860	9101	9510	9707	9154	9503				
Ailinglaplap	8	8	8	9	9	9	9	9	29	28	28	29	29	34	28	28	501	457	491	512	531	547	532	546				
Ailuk	2	3	3	3	2	2	2	2	8	6	7	8	8	8	8	8	150	157	165	132	103	127	141	141				
Arno	9	9	9	9	9	9	9	9	23	23	24	19	21	19	22	21	466	419	482	446	450	548	435	441				
Aur	2	2	2	2	2	2	2	2	6	10	7	7	6	10	9	9	136	140	118	114	125	152	148	290				
Ebon	3	3	3	3	3	3	3	3	13	13	13	14	13	18	14	14	274	286	294	337	317	327	290	295				
Enewetak	2	2	2	2	1	1	1	1	11	8	9	7	5	15	18	18	221	174	188	155	265	306	265	50				
Jabat	1	1	1	1	1	1	1	1	1	2	2	2	3	2	4	4	28	45	36	43	47	57	50	431				
Jaluit	8	8	8	8	8	8	8	8	17	19	18	21	20	23	19	19	429	455	445	496	428	497	431	431				
Kili	1	2	1	1	1	1	2	2	7	9	11	7	7	14	7	7	143	154	213	148	159	223	224	224				
Kwajalein	4	4	4	4	4	3	3	3	45	43	35	39	46	55	89	89	1195	1215	1448	1426	1584	1338	1318	1318				
Lae	1	1	1	1	1	1	1	1	4	2	4	4	5	6	6	6	96	102	98	97	100	110	118	118				
Lib	1	1	1	1	1	1	1	1	2	2	2	2	2	2	2	2	39	45	38	44	43	47	52	52				
Likiep	3	3	3	3	3	3	3	3	8	8	8	11	10	13	10	10	150	158	165	180	172	202	176	176				
Majuro	7	7	7	9	9	9	8	8	119	98	95	95	99	145	119	119	3231	2978	3106	3375	3528	3384	3236	3236				
Maloelap	5	5	5	5	5	5	5	5	13	11	13	14	13	14	15	15	244	220	249	263	281	264	260	260				
Mejit	1	1	1	1	1	1	1	1	5	6	6	5	7	6	7	7	131	131	135	113	140	165	166	166				
Mili	5	5	5	5	5	5	5	5	9	8	10	12	11	11	11	11	257	252	267	281	290	327	264	280				
Namorik	1	1	1	1	1	1	1	1	9	11	9	8	9	7	9	9	261	279	258	270	218	246	252	252				
Namu	4	4	4	4	4	4	4	4	11	11	11	11	12	14	16	16	261	240	253	258	249	246	266	266				
Ronglap/Mejatto							1	1	1							6	4	4								121	102	102
Ujae	1	1	1	1	1	1	1	1	4	2	4	6	4	7	5	5	119	119	151	141	148	193	147	147				
Utirik	1	1	1	1	1	1	1	1	4	3	5	6	6	5	2	2	109	112	83	100	123	114	89	89				
Wotje	3	3	3	3	3	3	3	3	9	10	7	10	10	12	8	8	182	160	177	170	209	166	192	192				
Wotho	1	1	1	1	1	1	1	1	2	2	2	2	2	5	2	2	32	46	51	49	36	42	48	48				
Private schools	20	21	26	26	27	27	28	28	157	148	185	197	199	218	177	177	2532	2637	3382	3475	3534	3606	3015	3015				
Ailinglaplap	1	1	2	2	3	3	3	3	6	5	8	7	8	11	9	9	60	55	96	95	129	103	83	83				
Ailuk	-	-	1	1	1	1	1	1	-	-	5	4	4	5	4	4	-	-	69	39	55	64	28	28				
Arno	2	2	3	3	3	3	3	3	8	8	11	12	12	12	12	12	123	143	137	190	184	177	216	216				
Jaluit	2	2	2	2	2	2	2	2	8	8	7	7	7	8	8	8	90	112	116	110	117	127	132	132				
Kwajalein	5	6	6	6	6	6	6	6	50	53	52	56	56	62	51	51	1015	916	1249	1225	1208	1285	1151	1151				
Majuro	8	8	10	10	10	10	11	11	79	68	94	105	106	111	87	87	1171	1325	1614	1717	1732	1757	1311	1311				
Namu	1	1	1	1	1	1	1	1	2	2	4	2	2	5	2	2	26	26	32	33	39	18	17	17				
Wotje	1	1	1	1	1	1	1	1	4	4	4	4	4	4	4	4	47	60	69	66	70	75	77	77				

Source: Ministry of Education

Table 5.2 PUBLIC AND PRIVATE SECONDARY SCHOOLS, TEACHERS AND ENROLLMENT BY ATOLL / ISLAND, 1988/89-1996/97.

	Number of schools												Number of teachers												Number of students											
	88/89	89/90	90/91	91/92	92/93	93/94	94/95	95/96	96/97	88/89	89/90	90/91	91/92	92/93	93/94	94/95	95/96	96/97	88/89	89/90	90/91	91/92	92/93	93/94	94/95	95/96	96/97	88/89	89/90	90/91	91/92	92/93	93/94	94/95	95/96	96/97
Both public & private schools	9	9	9	11	12	11	12	14	14	113	113	147	137	148	138	144	152	152	###	###	###	###	###	###	###	###	###	###	###	###	###	###	###	###	###	###
Ailinglaplap	-	-	-	-	1	1	1	2	2	-	-	-	-	2	2	4	8	8	-	-	-	-	-	-	38	40	40	79	79	-	-	-	-	-	-	-
Kwajalein	3	3	3	4	4	3	3	4	4	11	11	19	19	27	22	22	25	25	292	292	346	417	419	485	508	434	434	-	-	-	-	-	-	-	-	-
Jaluit	1	1	1	1	1	1	1	1	2	15	15	17	22	19	20	18	17	17	185	185	185	226	226	249	240	238	238	###	###	###	###	###	###	###	###	###
Majuro	5	5	5	6	6	6	7	7	6	87	87	111	96	100	94	97	102	102	###	###	###	###	###	###	###	###	###	###	###	###	###	###	###	###	###	###
Public Schools	2	2	2	2	2	2	2	2	2	61	61	63	62	64	58	63	67	67	891	891	867	894	939	###	997	998	998	###	###	###	###	###	###	###	###	###
Jaluit	1	1	1	1	1	1	1	1	1	15	15	17	22	19	20	18	17	17	185	185	185	226	226	249	262	238	238	-	-	-	-	-	-	-	-	-
Majuro	1	1	1	1	1	1	1	1	1	46	46	46	40	45	38	45	50	50	706	706	682	668	713	820	735	760	760	-	-	-	-	-	-	-	-	-
Private School	7	7	7	8	8	9	11	12	13	52	52	84	75	82	80	81	85	85	###	###	###	###	###	###	###	###	###	###	###	###	###	###	###	###	###	###
Ailinglaplap	-	-	-	-	1	1	1	2	2	-	-	-	-	2	2	4	8	8	-	-	-	-	-	-	38	40	48	79	79	-	-	-	-	-	-	-
Kwajalein	3	3	3	3	3	3	3	4	4	11	11	19	19	27	22	22	25	25	292	292	346	417	419	485	457	451	434	-	-	-	-	-	-	-	-	-
Majuro	4	4	4	5	5	5	6	6	6	41	41	65	56	55	56	52	52	52	727	727	797	904	###	889	879	982	982	-	-	-	-	-	-	-	-	-
Namu	-	-	-	-	-	-	1	-	1	-	-	-	-	-	-	-	-	-	-	-	-	-	-	-	-	-	-	-	-	-	-	-	-	-	-	-

Source : Ministry of Education

Table 5.3 PUBLIC AND PRIVATE PRIMARY AND SECONDARY SCHOOL ENROLLMENT BY GRADE AND SEX, 19

Sex & year	All schools	Primary School									Secondary school				
		Grade: 1st	2nd	3rd	4th	5th	6th	7th	8th	Total	Grade: 9th	10th	11th	12th	Total
Both sexes															
1983/84	9,558	1531	1241	1235	1123	1026	932	883	905	8876	246	184	142	110	682
1984/85	11,060	1570	1436	1289	1232	1085	961	946	938	9457	592	405	353	253	1603
1985/86	11,232	1546	1359	1304	1222	1166	1003	953	962	9515	609	490	348	270	1717
1986/87	11,599	1641	1398	1195	1308	1196	1135	1005	978	9856	627	523	342	251	1743
1987/88	11,894	1754	1463	1333	1332	1236	1199	1073	1086	#####	497	413	300	208	1418
1988/89	12,951	1741	1653	1508	1341	1331	1192	1150	1127	#####	739	490	367	312	1908
1989/90	13,309	1863	1585	1541	1449	1329	1265	1166	1145	#####	711	516	417	322	1966
1990/91	13,124	1782	1493	1525	1430	1358	1183	1132	1078	#####	673	652	459	359	2143
1991/92	14,463	2515	1436	1623	1469	1461	1356	1175	1213	#####	813	584	443	375	2215
1992/93	14,614	1996	1766	1452	1624	1513	1400	1306	1180	#####	854	622	511	390	2377
1993/94	15,048	2129	1725	1665	1463	1585	1376	1351	1272	#####	865	646	548	423	2482
1994/95	15,287	1993	1894	1683	1679	1446	1521	1339	1332	#####	893	614	464	429	2400
1995/96	14,727	1657	1580	1661	1716	1522	1520	1233	1328	#####	879	709	507	415	2510
1996/97	14,775	1657	1578	1658	1715	1519	1516	1292	1326	#####	879	713	507	415	2514
Projections															
1996/97	15,931	2282	1884	1798	1712	1613	1485	1379	1353	#####	865	658	509	393	2425
1997/98	16,331	2339	1931	1843	1755	1653	1522	1414	1387	#####	887	675	522	403	2487
1998/99	16,725	2396	1978	1887	1797	1693	1559	1448	1421	#####	908	691	534	413	2546
1999/2000	17,122	2453	2023	1932	1840	1733	1596	1483	1454	#####	930	708	547	423	2608
Male															
1983/84	5,392	817	655	639	612	498	510	463	467	4661	248	205	155	123	731
1984/85	5,690	838	705	668	614	567	491	514	512	4909	280	182	195	124	781
1985/86	5,737	803	708	683	632	595	525	493	473	4912	278	254	160	133	825
1986/87	6,009	833	699	676	673	601	593	514	493	5082	335	278	180	134	927
1987/88	6,125	896	733	701	704	650	633	571	531	5419	245	195	167	99	706
1988/89	6,544	808	855	752	696	719	619	597	561	5607	356	271	172	138	937
1989/90	6,793	972	839	778	726	688	700	556	553	5812	346	269	212	154	981
1990/91	6,629	893	765	800	709	690	605	610	513	5585	326	315	228	175	1,044
1991/92	7,474	1324	744	874	789	748	693	590	632	6394	399	268	222	191	1,080
1992/93	7,417	1026	937	730	842	741	698	654	592	6220	445	305	248	199	1,197
1993/94	7,638	1106	875	860	751	794	700	708	620	6414	443	314	259	208	1,224
1994/95	7,797	1034	970	850	864	761	757	696	686	6618	437	304	221	217	1,179
1995/96	7,451	851	846	836	869	769	778	610	633	6192	452	338	242	227	1,259
1996/97	7,444	851	845	836	868	766	776	610	633	6185	452	338	242	227	1,259
Female															
1983/84	5,000	714	586	596	511	528	422	420	438	4215	298	210	154	123	785
1984/85	5,370	732	731	621	618	518	470	432	426	4548	312	223	158	129	822
1985/86	5,495	743	651	621	590	571	478	460	489	4603	331	236	188	137	892
1986/87	5,590	808	699	519	635	595	542	491	485	4774	292	245	162	117	816
1987/88	5,769	858	730	632	628	586	566	502	555	5057	252	218	133	109	712
1988/89	6,407	933	798	756	645	612	573	553	566	5436	383	219	195	174	971
1989/90	6,516	891	746	763	723	641	565	610	592	5531	365	247	205	168	985
1990/91	6,495	889	728	725	721	668	578	522	565	5396	347	337	231	184	1,099
1991/92	6,989	1191	692	749	680	713	663	585	581	5854	414	316	221	184	1,135
1992/93	7,197	970	829	722	782	772	702	652	588	6017	409	317	263	191	1,180
1993/94	7,410	1023	850	805	712	791	676	643	652	6152	422	332	289	215	1,258
1994/95	7,490	959	924	833	815	685	764	643	646	6269	456	310	243	212	1,221
1995/96	7,276	806	734	825	847	753	742	623	695	6025	427	371	265	188	1,251
1996/97	7,331	806	733	822	847	753	740	682	693	6076	427	375	265	188	1,255

Source: Ministry of Education

Table 5.4 NUMBER OF STUDENTS GRADUATED FROM EIGHT GRADE IN PUBLIC SCHOOLS: 1990-1997.

Atoll/Island	June, 1990		June, 1991		June, 1992		June, 1993		June, 1994		June, 1995		June, 1996		June, 1997									
	Both	sexes	Male	Female	Both	sexes	Male	Female	Both	sexes	Male	Female	Both	sexes	Male	Female								
All	867	434	433	837	393	444	936	489	450	920	471	449	936	###	494	1037	###	506	1017	###	529	1017	488	529
Ailinglaplap	48	27	21	49	21	28	45	21	24	57	31	26	15	24	30	61	30	31	49	32	17	49	32	17
Aiulik	16	7	9	25	11	14	16	7	9	14	8	6	9	6	3	16	10	6	16	4	12	16	4	12
Arno	36	16	20	41	25	16	43	17	26	30	15	15	37	15	22	39	16	23	31	17	14	31	17	14
Aur	14	8	6	15	5	10	18	10	8	11	7	4	10	4	6	14	6	8	14	6	8	14	6	8
Ebon	31	16	15	34	22	12	46	32	14	56	31	25	49	27	22	58	33	25	33	14	19	33	14	19
Enewetak	18	10	8	7	2	5	17	6	11	16	10	6	25	15	10	26	17	9	31	15	16	31	15	16
Jabat	4	1	3	4	3	1	1	1	1	6	4	2	4	3	1	12	8	4	8	4	4	8	4	4
Jaluit	59	31	28	54	23	31	61	37	24	60	45	15	55	28	27	64	26	38	57	28	29	57	28	29
Kili	9	3	6	10	5	5	17	15	2	13	6	7	14	11	3	11	9	2	30	15	15	30	15	15
Kwajalein	114	59	55	116	48	68	122	61	61	113	57	56	150	72	78	128	68	60	139	63	76	139	63	76
Lae	6	2	4	6	5	1	4	3	4	5	1	4	6	1	5	9	2	7	7	5	2	7	5	2
Lib	3	1	2	3	0	3	3	1	2	2	0	2	4	2	2	5	3	2	7	4	3	7	4	3
Likiep	18	11	7	13	6	7	23	10	13	28	11	17	17	11	6	30	17	13	13	6	7	13	6	7
Majuro	331	165	166	309	140	169	347	187	160	337	149	188	380	###	199	375	###	191	388	###	205	388	183	205
Malaelap	28	11	17	20	9	11	20	13	7	38	18	20	25	15	10	30	13	17	32	15	17	32	15	17
Mejit	9	6	3	9	6	3	19	4	15	13	11	2	10	6	4	19	11	8	12	4	8	12	4	8
Mili	29	10	19	26	13	13	30	14	16	29	17	12	31	13	18	42	23	19	30	14	16	30	14	16
Namorik	18	10	8	17	8	9	30	19	11	30	14	16	32	19	13	22	9	13	16	5	11	16	5	11
Namu	27	15	12	34	17	17	38	18	20	26	11	15	30	10	20	29	21	8	51	33	18	51	33	18
Ronglap(Mejatto)	16	10	6	12	6	6	13	3	10	15	11	4	2	1	1	14	11	3	9	7	2	9	7	2
Ujae	10	3	7	10	8	2	5	3	2	0	0	0	11	8	3	9	2	7	6	3	3	6	3	3
Utrik	3	2	1	3	2	1	4	3	1	17	11	6	18	7	11	11	6	5	2	1	1	2	1	1
Wothe	20	10	10	20	8	12	14	5	9	4	3	1	2	2	0	13	6	7	22	1	21	22	1	21

Source: Ministry of Education

Table 5.5 Marshall Islands Scholarship holders by age and sex; 1989/90-1996/97.

	1989/90	1990/91	1991/92	1992/93	1993/94	1994/95	1995/96	1996/97
Both sexes	174	156	191	138	107	110	137	145
15 - 19 years	43	30	43	24	26	21	29	15
20 - 24 years	91	93	103	76	36	44	51	63
25 - 29 years	11	14	20	15	20	17	26	34
30 - 34 years	9	5	8	12	10	9	10	12
35 - 39 years	11	9	9	5	8	6	7	5
40 - 44 years	6	3	6	2	5	5	6	6
45 - 49 years	3	2	2	4	2	8	4	9
50 +	0	0	0	0	0	0	4	1
Male	121	102	122	89	60	70	78	68
15 - 19 years	28	18	21	18	14	9	14	6
20 - 24 years	59	58	64	49	20	28	25	28
25 - 29 years	9	11	17	8	11	14	20	16
30 - 34 years	6	4	6	6	5	3	6	5
35 - 39 years	10	6	7	2	5	6	4	1
40 - 44 years	6	3	5	2	3	3	4	3
45 - 49 years	3	2	2	4	2	7	3	8
50+	-	-	-	-	-	-	2	1
Female	53	54	69	49	47	40	59	77
15 - 19 years	15	12	22	6	12	12	15	9
20 - 24 years	32	35	39	27	16	16	26	35
25 - 29 years	2	3	3	7	9	3	6	18
30 - 34 years	3	1	2	6	5	6	4	7
35 - 39 years	1	3	2	3	3	0	3	4
40 - 44 years	-	-	1	-	2	2	2	3
45 - 49 years	-	-	-	-	0	1	1	1
50+	-	-	-	-	-	-	2	0

Source: Marshall Islands Scholarship, Grant & Loan Board Program, Ministry of Education

Table 5.6 Total Number of Two years and Four years College Graduates; 1997

	Two Years	Four Years
Both sexes	19	6
15 - 19 years	0	0
20 - 24 years	15	2
25 - 29 years	2	1
30 - 34 years	1	2
35 - 39 years	0	0
40 - 44 years	1	1
45 - 49 years	0	0
50 +	0	0
Male	13	4
15 - 19 years	0	0
20 - 24 years	9	0
25 - 29 years	2	1
30 - 34 years	1	2
35 - 39 years	0	0
40 - 44 years	1	1
45 - 49 years	0	0
50+	0	0
Female	6	2
15 - 19 years	0	0
20 - 24 years	6	2
25 - 29 years	0	0
30 - 34 years	0	0
35 - 39 years	0	0
40 - 44 years	0	0
45 - 49 years	0	0
50+	0	0

Source: Marshall Islands Scholarship, Grant & Loan Board Program, Ministry of Education

Table 6.1 ECONOMICALLY ACTIVE , EMPLOYED AND UNEMPLOYED POPULATION, 1980.

	Total	Male	Female
Total Population	30,873	15,851	15,022
Working Age Population (15 years & over)	15,294	7,696	7,598
Percentage of Total Population	49.6	48.6	50.6
Economically Active Population	7,309	5,042	2,267
Percentage Economically Active of Working Populatic	47.7	65.5	29.8
Employed Population	6,598	4,587	2,011
Unemployed Population	711	455	256
Unemployment Rate	10.2	9.0	11.3

Source: 1980 Census of Population, US Bureau of Census and OPS

Table 6.2 ECONOMICALLY ACTIVE, EMPLOYED AND UNEMPLOYED POPULATION, 1988.

	Total	Male	Female
Total Population	43,380	22,181	21,199
Working Age Population (15 years & over)	21,244	10,819	10,425
Percentage of Total Population	49.0	48.8	49.2
Economically Active Population	11,488	8,353	3,135
Percentage Economically Active of Working Populatic	53.7	77.2	30.1
Employed Population	10,056	7,335	2,721
Unemployed Population	1,432	1,018	414
Unemployment Rate	12.5	12.2	13.2

Source: 1988 Census of Population and Housing, OPS

Table 6.4 MAJOR OCCUPATION GROUP, BY SEX, FOR PERSONS 14 YEARS OF AGE AND OVER, 1958

Major occupation group	Both Sexes	Male	Female
Persons 14 years of age and over	7,727	3,904	3823
Total reporting an specialized occupation	3,224	3,040	184
Professional, technical, and kindred workers	250	217	33
Managers, officials, proprietors, exc. farm	127	122	5
Clerical and kindred workers	44	42	2
Sales workers
Craftsmen, foremen, and kindred workers	299	297	2
Handicrafters	60	1	59
Operatives and kindred workers, exc. handicrafters	82	81	1
Service workers	118	58	60
Copra makers	1,862	1,843	19
Farm workers, exc. copra makers	28	28	...
laborers, exc. farm and mine	354	351	3

Source: Census of the Trust Territory of the Pacific Islands (TTPI), 1958 (prepared by the High Commissioner of the TTPI, June 1959).

Table 6.5 EMPLOYED POPULATION BY MAJOR OCCUPATIONAL GROUPS, 1980.

Major Occupational Groups	Total		Male		Female	
	Number	Percent	Number	Percent	Number	Percent
All occupational groups	6,645	100.0	4,587	100.0	2,011	100.0
Managerial and Professional Specialty Occupations	872	13.1	652	14.2	206	10.2
Executive, Administrative & Managerial	288	4.3	252	5.5	31	1.5
Professional Specialty Occupations	584	8.8	400	8.7	175	8.7
Technical, Sales and Administrative Support Occupations	720	10.8	432	9.4	288	14.3
Technicians and related support occupations	111	1.7	79	1.7	30	1.5
Sales occupations	227	3.4	105	2.3	120	6.0
Admin: support occupations including clerical	391	5.9	248	5.4	138	6.9
Service occupations	741	11.2	483	10.5	258	12.8
Private Household occupations	11	0.2	-	0.0	11	0.5
Protective Service occupations	145	2.2	137	3.0	5	0.2
Other service occupations	596	9.0	346	7.5	242	12.0
Farming, Forestry, Fishing Occupations	84	1.3	80	1.7	4	0.2
Precision production, Craft and Repair occupations	553	8.3	532	11.6	21	1.0
Operators, Fabricators and Labourers	640	9.6	601	13.1	39	1.9
Machine Operators, Assemblers and inspectors	150	2.3	119	2.6	28	1.4
Transportation and Material Moving Occupations	332	5.0	319	7.0	6	0.3
Handlers, Equipment cleaners, Helpers and Laborers	172	2.6	163	3.6	5	0.2
Primarily Subsistence Activity	3,002	45.2	1,807	39.4	1,195	59.4

Source: 1980 Census of Population, US Bureau of Census and OPS

Table 6.6 EMPLOYED POPULATION BY INDUSTRY, 1980.

Industry	Total		Male		Female	
	Number	Percent	Number	Percent	Number	Percent
All industries	6,598	100.0	4,587	100.0	2,011	100.0
Agriculture, Forestry, Fisheries and Mining	3,044	46.1	1,846	40.2	1,198	59.6
Money Economy	42	-	39	-	3	-
Primarily Subsistence Activity	3,002	-	1,807	-	1,195	-
Construction	372	5.6	361	7.9	11	0.5
Manufacturing	114	1.7	91	2.0	23	1.1
Nondurable goods	94	-	77	-	17	-
Durable	20	-	14	-	6	-
Transportation	243	3.7	231	5.0	12	0.6
Communications and other public utilities	59	0.9	54	1.2	5	0.2
Wholesale Trade	148	2.2	107	2.3	41	2.0
Retail Trade	395	6.0	212	4.6	183	9.1
Finance, Insurance and Real Estate	29	0.4	12	0.3	17	0.8
Business and Repair Services	606	9.2	507	11.1	99	4.9
Personal, Entertainment and Recreation Serv	71	1.1	22	0.5	49	2.4
Professional and Related Services	926	14.0	651	14.2	275	13.7
Health Services	238	-	163	-	75	-
Educational Services	554	-	397	-	157	-
Other Professional and related services	134	-	91	-	43	-
Public Administration	591	9.0	493	10.7	98	4.9

Source: 1980 Census of Population - U. S. Bureau of the Census and OPS

Table 6.7 EMPLOYED POPULATION CLASSIFIED BY MAJOR INDUSTRY GROUPS AND

Major industry group	Total		Male		Female	
	Number	Percent	Number	Percent	Number	Percent
All Industries	10,155	100.0	7,335	100.0	2,721	100.0
Agriculture & fishing	2,178	21.5	2,080	28.4	70	2.6
Mining & Quarrying	2	0.0	2	0.0	-	0.0
Manufacturing	946	9.3	84	1.1	861	31.6
Electricity & water	83	0.8	78	1.1	4	0.1
Construction	1,090	10.7	1,043	14.2	33	1.2
Wholesale / Retail Restaurants & Hotels	1,404	13.8	753	10.3	641	23.6
Transport, Storage & Communication	544	5.4	482	6.6	55	2.0
Finance, Insurance Real Estate & Business	842	8.3	660	9.0	173	6.4
Community, Social & & Personal Services	3,064	30.2	2,151	29.3	884	32.5
Not Stated	2	0.0	2	0.0	-	0.0

Source : 1988 Census of Population and Housing, OPS

ble 6.8 EMPLOYED POPULATION BY MAJOR OCCUPATIONAL GROUP AND SEX, 1988.

Occupation	Total		Male		Female	
	Number	Percent	Number	Percent	Number	Percent
All occupation group	10,056	100.0	7,335	100.0	2,721	100.0
Professional, Technical & Related Workers	1,682	16.7	1,148	15.7	534	19.6
Administrative & Managerial Workers	265	2.6	247	3.4	18	0.7
Clerical & Related Workers	902	9.0	428	5.8	474	17.4
Sales Workers	501	5.0	281	3.8	220	8.1
Service Workers	1,322	13.1	825	11.2	497	18.3
Agricultural & Related Workers / Fishermen	2,129	21.2	2,067	28.2	62	2.3
Production Workers, Transport Equipment Operators & Labourers	3,249	32.3	2,335	31.8	914	33.6
Not Stated	6	0.1	4	0.1	2	0.1

Source : 1988 Census of Population and Housing, OPS

Table 6.9 EMPLOYED POPULATION BY CLASS OF WORKER, 1980.

Class of Worker	Total		Male		Female	
	Number	Percent	Number	Percent	Number	Percent
All workers	11,185	100.0	4,587	100.0	2,011	100.0
Paid employees, total	6,109	6109.0	2,669	2669.0	771	771.0
Private Wage & Salary Workers	2,843	2843.0	1,212	1212.0	419	419.0
Government Workers	384	384.0	176	176.0	32	32.0
Local Government Workers	2,882	2882.0	1,281	1281.0	320	320.0
Other workers, total	5,076	5076.0	1,918	1918.0	1,240	1240.0
Self-Employed Workers	251	251.0	107	107.0	37	37.0
Unpaid Family Workers	16	16.0	4	4.0	8	8.0
Primarily Subsistence Workers	4,809	4809.0	1,807	1807.0	1,195	1195.0

Source: 1980 Census of Population, US Bureau of Census and OPS

Table 6.8 EMPLOYED POPULATION BY CLASS OF WORKER: 1980

Class of Worker	Total		Male		Female	
	Number	Percent	Number	Percent	Number	Percent
All workers	6,698	100.0	4,587	100.0	2,011	100.0
Paid employees, total	3,498	52.2	2,669	58.2	771	38.3
Private Wage & Salary Workers	1,657	24.7	1,212	26.4	419	20.8
Government Workers	212	3.2	176	3.8	32	1.6
Local Government Workers	1,629	24.3	1,281	27.9	320	15.9
Other workers, total	3,200	47.8	1,918	41.8	1,240	61.7
Self-Employed Workers	146	2.2	107	2.3	37	1.8
Unpaid Family Workers	12	0.2	4	0.1	8	0.4
Primarily Subsistence Workers	3,041	45.4	1,807	39.4	1,195	59.4

Source: 1980 Census of Population, US Bureau of Census and OPS, RMI.

Table 6.10 PAID EMPLOYEES IN THE PUBLIC AND PRIVATE SECTOR, 1982-1996

Year & nationality	Total Public & private sector	Public Sector	Private Sector			
			Total	Majuro	Ebeye	Kwajalein
1982 Micronesian	4753	2214	2539	1808	110	621
Other	227	89	138	136	2	
Total	4980	2303	2677	1944	112	621
1985 Micronesian	5158	2171	2987	2278	91	618
Other	329	96	233	227	6	
Total	5487	2267	3220	2505	97	618
1986 Micronesian	6542	2478	4064	3167	156	741
Other	429	107	322	314	8	
Total	6971	2585	4386	3481	164	741
1987 Micronesian	6713	2340	4373	3109	206	1058
Other	426	84	342	331	11	
Total	7139	2424	4715	3440	217	1058
1988 Micronesian
Other
Total	6761	3392	3369	1846	369	1154
1989 Micronesian	3376	2294	294	788
Other	294	277	17	
Total	6224	2554	3670	2571	311	788
1990 Micronesian	3762	2612	376	774
Other	406	367	39	
Total	6839	2671	4168	2979	415	774
1991 Micronesian	4044	2816	431	797
Other	439	395	44	
Total	7277	2794	4483	3211	475	797
1992 Micronesian	4569	2835	506	1228
Other	473	398	52	
Total	7896	2877	5019	3233	558	1228
1993 Micronesian
Other
Total	7625	3230	4395	1228
1994 Micronesian
Other
Total	8727	4122	4605	1023
1995 Micronesian
Other
Total	8810	4086	4724	1152
1996 Micronesian
Other
Total	10335	3602	5579	1154

Note: The figures in this table include those employed for short durations as well.

... means the breakdown is not available.

Data for 1997 was not available.

Sources: Ministry of Finance
Marshall Islands Social Security Administration
Ministry of Internal Affairs and Social Welfare

Table 7.1 PRIMARY PRODUCTION BY HOUSEHOLDS FOR OWN CONSUMPTION, 1994

Item	1994		1995		1996		1997	
	Quantity Short Tons	Value US \$	Quantity Short Tons	Value US \$	Quantity Short Tons	Value US \$	Quantity Short Tons	Value US \$
Agricultural Products		1,101,042		1,215,763		#####		1,372,425
Banana	150	81,818	158	90,491	164	96,745	170	102,065
Breadfruit	1,100	495,575	1,155	546,371	1,197	583,226	1,238	612,095
Pandanus	100	43,636	105	48,109	109	51,439	112	53,760
Green and mature coconuts	777	323,424	815	357,739	856	385,424	898	410,800
Taro	100	127,274	105	140,320	109	150,035	112	157,244
Other vegetables	29	13,360	32	15,360	33	16,315	34	16,830
Fruits	-	15,955	-	17,373	-	18,520	-	19,631
Meat Products		1,536,410		1,713,471		#####		2,050,540
Pork	569	1,100,550	591	1,200,785	-	1,354,200	-	1,500,453
Chicken	198	435,860	222	512,686	-	535,105	-	550,087
Fish and Shell fish		2,915,992		3,238,828		#####		3,747,476
Fish	1,445	2,852,174	1,521	3,168,096	1,593	3,655,848	-	3,672,000
Shell fish including crabs	-	63,818	-	70,732	-	73,278	-	75,476

Sources: Ray Shaw, Strengthening of Agricultural Support Services
 Consultant Report for ADB 1994
 Lal Perera National Income Estimates 1991 and 1992
 Census of Population and Housing 1988, OPS, RMI

Table 2 Livestock, 1991-97

Year	Total value \$ (thousands)	Pig		Poultry	
		Number	Value \$ (thousands)	Number	Value \$ (thousands)
1991	3,020	11,024	2,894	48,232	126
1992	3,294	11,420	3,152	51,608	142
1993	3,591	11,877	3,437	53,465	154
1994	3,588	11,794	3,420	55,391	168
1995	3,913	12,222	3,721	57,385	192
1996	4,094	13,216	3,899	57,814	195
1997	4,158	13,341	3,962	56,728	196

Source: OPS

Table 7.2 LIVESTOCK, 1991 - 1995

Year	Total value \$ (thousands)	Pig		Poultry	
		Number	Value \$ (thousands)	Number	Value \$ (thousands)
1991	3,020	11,024	2,894	48,232	126
1992	3,294	11,420	3,152	51,608	142
1993	3,591	11,877	3,437	53,465	154
1994	3,588	11,794	3,420	55,391	168
1995	3,913	12,222	3,721	57,385	192
1996	4,094	13,216	3,899	57,814	195

Source: OPS

Table 7.3 COPRA PRODUCTION BY ATOLLS AND ISLANDS, 1978 and 1981 -97.
(short tons)

Atoll/Island	1978	1981	1982	1983	1984	1985	1986	1987	1988	1989	1990	1991	1992	1993	1994	1995	1996	1997
All atolls/ Islands	5877	5760	5773	6491	4483	4301	6815	5405	5475	5805	5159	4213	5861	4627	4972	7201	6464	6031
Ailinglaplap	606	782	574	981	427	433	858	678	692	625	851	644	834	660	713	1121	696	721
Ailuk	137	169	195	164	162	50	89	209	127	170	47	68	166	145	40	108	146	131
Arno	888	957	903	917	708	753	1094	940	1030	968	1073	808	####	790	827	1320	906	876
Aur	223	251	252	320	134	157	252	264	158	198	131	181	185	235	201	251	278	278
Ebon	485	575	454	479	315	371	683	432	453	557	426	401	421	264	371	523	417	423
Enewetak	15	18	-	22	57	33	14	-	-	-	-	-	19	-	-	-	-	-
Jabat	4	92	33	42	19	23	48	29	46	30	4	23	54	24	56	59	38	56
Jaluit	496	1	498	361	169	386	664	352	304	390	377	184	346	202	420	613	558	442
Kili	47	49	8	21	53	3	-	-	-	-	-	-	-	-	1	5	-	-
Kwajalein	15	12	5	8	12	15	12	29	23	8	-	-	13	9	14	15	31	33
Lae	86	91	54	65	44	62	78	58	33	33	33	33	30	42	46	67	57	54
Lib	47	54	55	72	25	21	78	43	51	36	42	41	44	27	40	61	52	52
Likiep	141	186	143	185	237	121	82	74	63	52	47	36	65	96	48	86	80	66
Majuro	369	380	213	291	262	260	209	172	261	160	104	96	302	202	151	211	177	169
Maloelap	276	258	280	319	209	238	286	268	291	305	214	228	312	426	426	429	527	445
Mejit	169	117	189	204	172	60	150	208	165	147	160	182	217	84	-	387	186	149
Mili	626	625	631	671	411	586	745	588	728	727	586	400	533	425	610	685	753	781
Namorik	345	184	295	325	280	257	446	246	253	343	321	215	342	222	330	223	430	422
Namu	332	344	367	322	162	132	482	239	282	302	366	331	235	205	258	422	309	307
Rongelap	47	68	60	47	63	18	-	-	-	-	-	-	-	-	-	-	-	-
Ujae	90	108	57	63	63	43	81	65	44	70	2	50	49	20	32	39	77	75
Utirik	100	88	68	130	102	33	52	81	85	99	33	41	107	106	76	86	156	131
Wotho	15	33	22	27	25	23	32	40	28	43	24	14	164	12	-	53	15	14
Wotje	318	318	417	455	372	223	380	390	357	544	315	235	402	433	314	438	577	407

Note: Copra produced in Ujelang Atoll has been added to production in Enewetak Atoll.
In 1989, 1,187 short tons of copra were imported from Kiribati and processed at Tobolar

Table 7.4 INDEX OF COPRA PRODUCTION BY ATOLLS AND ISLANDS, 1978 - 1997.

Atoll/Island	####	1981	1982	1983	####	####	####	####	####	####	####	####	####	1993	####	####	####	1997
All atolls Islands	100	107	98	110	76	73	118	92	94	99	88	72	100	79	84	123	110	98
Ailinglaplap	100	129	95	162	71	72	142	112	114	103	140	106	138	109	118	185	115	141
Ailuk	100	123	142	120	118	36	65	153	93	124	34	50	121	106	29	79	106	102
Arno	100	108	102	103	80	85	123	106	116	109	121	91	115	89	93	149	102	101
Aur	100	113	114	144	60	71	114	118	71	89	59	81	83	105	90	113	124	78
Ebon	100	119	93	98	65	76	141	89	93	115	88	83	87	54	76	108	86	100
Enewetak	100	120	-	149	380	222	93	-	-	-	-	-	127	-	-	-	-	-
Jabat	100	2300	825	1050	475	575	####	725	####	750	100	575	####	600	####	####	953	1150
Jaluit	100	107	101	73	34	78	134	71	61	79	76	37	70	41	85	124	113	92
Kili	100	104	18	44	113	6	20	-	-	-	-	-	-	-	-	11	-	-
Kwajalein	100	80	34	75	80	100	80	193	153	52	-	-	100	69	108	100	75	113
Lae	100	106	63	75	51	72	91	67	38	38	38	38	35	49	53	78	66	67
Lib	100	115	115	152	53	44	166	91	107	76	89	87	94	57	85	130	112	153
Likiep	100	132	102	131	168	86	58	52	45	37	33	26	46	68	34	61	57	30
Majuro	100	103	58	79	71	70	57	47	71	43	28	26	82	55	41	57	48	42
Maloelap	100	93	101	116	76	86	104	97	105	111	78	83	113	154	154	155	191	103
Mejit	100	69	111	121	102	36	89	123	98	87	95	108	128	50	-	229	110	34
Mili	100	100	101	107	66	94	119	348	116	116	94	64	86	69	98	109	120	116
Namorik	100	53	85	94	81	75	129	71	73	99	93	62	99	64	96	65	125	107
Namu	100	104	111	97	49	40	145	72	85	91	110	100	71	62	78	127	93	128
Rongelap	100	145	128	99	134	38	-	-	-	-	-	-	-	-	-	-	-	-
Ujae	100	120	63	70	70	47	90	72	49	78	2	56	54	22	36	43	85	62
Utirik	100	88	68	130	102	33	52	81	85	99	33	41	107	106	76	86	156	55
Wotho	100	220	142	180	173	154	213	287	181	283	160	93	####	80	-	353	100	133
Wotje	100	100	132	143	117	70	120	123	112	112	99	74	126	136	99	138	181	123

Notes : Jemo has been excluded as its production was nil in 1978 and hence no index figures can be calculated
The people of Ronglap have moved to Mejjato in Kwajalein Atoll in May 1985

Source: Tobolar Processing Plant

Table 7.5 COPRA PRICES PAID TO OUTER ISLANDS, 1978 - 1997.

Period ending	Price per short ton (US\$)	Period ending	Price per short ton (US\$)
1978 February	134		
May	159	July 4	290
June	174	February 5	370
September	190	1985 May 21	260
October	205	June 8	200
November	220	September 6	180
December	270	December	120
1979 January	310	1986 December	120
February	370	1987 January 25	160
April	400	September 20	200
September	470	December	220
October	400	1988 December	220
November	387	1989 December	220
1980 January	375	1990 July	200
April	340	September	140
May	210	March	180
November	150	October	140
1981 November	170	1991 March	180
1981 January 20	190	October	140
1982 June	150	December	220
September	130	1992 December	500
1983 May	100	1993 July	430
July 15	140	1994 November	390
1983 July 27	180	1995 December	390
September 23	220	1996 March	320
1984 February	250	1997 July	220

Note: The prices in Majuro for 1988 to 1992 were \$30 higher.

Source: Tobolar Processing Plant

Table 7.6 COPRA PRODUCTION, AVERAGE PRODUCER PRICE AND TOTAL PRODUCER INCOM

Year	Copra production (short tons)	Average producer price per ton (\$)	Total producer income (\$'000)
1951	4,980	84	418
1952	4,565	94	429
1953	4,580	78	357
1954	3,896	102	397
1955	4,434	128	568
1956	5,480	102	559
1957	6,034	108	652
1958	5,701	106	604
1959	3,700	102	377
1960	4,436	148	657
1961	6,060	126	764
1962	4,521	142	642
1963	4,975	154	766
1964	5,742	166	953
1965	5,807	184	1,068
1966	5,554	182	1,011
1967	6,272	132	828
1968	6,311	194	1,224
1969	6,401	156	999
1970	7,348	170	1,249
1971	5,344	154	823
1972	5,715	122	697
1973	4,574	110	503
1974	6,336	356	2,256
1975	6,482	270	1,750
1976	5,685	160	910
1977	6,075	-	-
1978	5,876	182	1,069
1979	6,488	416	2,699
1980	6,257	223	1,395
1981	5,760	171	985
1982	5,773	136	785
1983	6,491	174	1,129
1984	4,483	316	1,417
1985	4,301	208	895
1986	6,815	120	818
1987	5,405	200	1,081
1988	5,475	220	1,205
1989	5,805	220	1,277
1990	5,159	187	965
1991	4,213	155	653
1992	5,861	449	2,632
1993	4,627	470	2,175
1994	4,836	423	2,046
1995	7,728	433	3,346
1996	6,444	420	2,706
1997	5,776	357	2,062
Percent Change from 1996 to 1997	0.90	0.85	0.76

Source: Tobolar Processing Plant

Note: The average price in this table is different from the average price in table 7.5, in that, the average price in this table is for the whole country whereas the average price in table 7.5 is for outer islands only.

Table 7.7. TOTAL FISH CATCH BY JAPANESE AND OTHER FOREIGN FISHING VESSELS BY FISHING TECHNIQUE AND TYPE OF FISH: 1989-95
(metric tons)

Vessel & fishing technique	Total	Albacore	Bigeye	Yellowfin	Bill Fish	Skipjack	Striped Marlin	Blue Marlin	Black Marlin	Swordfish	Sailfish	Shark	Other
1989, Total	12,992.9	36.2	1,983.8	2,840.1	185.1	7,679.4	-	182.7	-	-	-	-	85.6
(a) Japanese fishing vessel	6,761.7	23.2	889.2	1,483.4	-	4,136.0	-	182.7	-	-	-	-	47.2
Longline	2,625.7	23.2	889.2	1,483.4	-	-	-	182.7	-	-	-	-	47.2
Pole & line	4,136.0	-	-	-	-	4,136.0	-	-	-	-	-	-	-
(b) Other foreign fishing vessel	6,231.2	13.0	1,094.6	1,356.7	185.1	3,543.4	-	-	-	-	-	-	38.4
1990, Total	16,820.9	28.9	4,150.4	4,427.7	-	7,694.5	4.7	371.2	5.0	18.4	-	28.3	91.9
(a) Japanese fishing vessel	7,879.6	15.1	2,288.9	1,437.4	-	3,843.0	-	201.9	-	-	-	28.3	65.0
Longline	4,036.6	15.1	2,288.9	1,437.4	-	-	-	201.9	-	-	-	28.3	65.0
Pole & line	3,843.0	-	-	-	-	3,843.0	-	-	-	-	-	-	-
(b) Other foreign fishing vessel	8,941.3	13.8	1,861.5	2,990.3	-	3,851.5	4.7	169.3	5.0	18.4	-	-	26.9
1991, Total	8,247.5	60.5	3,480.3	2,760.3	-	1,476.4	4.2	365.9	15.0	26.2	-	4.1	54.6
(a) Japanese fishing vessel	4,183.3	30.8	1,809.2	1,389.6	-	722.0	-	187.2	-	-	-	4.1	40.4
Longline	3,461.3	30.8	1,809.2	1,389.6	-	-	-	187.2	-	-	-	4.1	40.4
Pole & line	722.0	-	-	-	-	722.0	-	-	-	-	-	-	-
(b) Other foreign fishing vessel	4,064.2	29.7	1,671.1	1,370.7	-	754.4	4.2	178.7	15.0	26.2	-	-	14.2
1992, Total	25,561.9	14.0	3,305.7	5,326.0	-	16,578.8	14.4	235.2	13.4	38.1	-	-	36.3
(a) Japanese fishing vessel	6,179.0	0.0	2,120.0	1,799.0	-	2,064.0	5.0	132.0	5.0	24.0	-	-	30.0
Longline	4,065.0	-	2,120.0	1,763.0	-	-	5.0	132.0	5.0	24.0	-	-	16.0
Pole & line	2,114.0	-	-	36.0	-	2,064.0	-	-	-	-	-	-	14.0
(b) Other foreign fishing vessel	19,382.9	14.0	1,185.7	3,527.0	-	14,514.8	9.4	103.2	8.4	14.1	-	-	6.3
1993, Total	#####	-	53,012.2	54,371.4	-	2,945.5	-	-	545.0	-	-	-	323.7
(a) Japanese fishing vessel	4,388.4	-	0.0	1,119.2	-	2,945.5	-	-	-	-	-	-	323.7
Longline	1,403.9	-	-	1,103.7	-	-	-	-	-	-	-	-	300.2
Pole & line	2,984.5	-	-	15.5	-	2,945.5	-	-	-	-	-	-	23.5
(b) Other foreign fishing vessel	#####	-	53,012.2	53,252.2	-	-	-	-	545.0	-	-	-	-
1994, Total	10,494.0	45.0	3,382.0	2,698.0	0.0	3,844.0	19.0	262.0	105.0	88.0	12.0	30.0	9.0
(a) Japanese fishing vessel	7,573.0	45.0	1,864.0	1,501.0	0.0	3,844.0	18.0	249.0	6.0	31.0	0.0	6.0	9.0
Longline	3,697.0	45.0	1,864.0	1,470.0	-	-	18.0	249.0	6.0	31.0	0.0	6.0	8.0
Pole & line	3,876.0	-	-	31.0	-	3,844.0	-	-	-	-	-	-	1.0
(b) Other foreign fishing vessel	2,921.0	0.0	1,518.0	1,197.0	-	-	1.0	13.0	99.0	57.0	12.0	24.0	0.0
1995, Total	2,561.6	6.6	618.3	856.5	55.0	1,019.0	0.0	0.1	0.0	0.0	0.0	0.0	6.1
(a) Japanese fishing vessel	2,561.6	6.6	618.3	856.5	55.0	1,019.0	0.0	0.1	0.0	0.0	0.0	0.0	6.1
Longline	1,537.6	6.6	618.3	855.5	55.0	-	-	0.1	-	-	-	-	2.1
Pole & line	1,024.0	-	-	1.0	-	1,019.0	-	-	-	-	-	-	4.0
(b) Other foreign fishing vessel	0.0	-	-	-	-	-	-	-	-	-	-	-	-
Percent change from 1994 to 1995													
Total	0.24	0.15	0.18	0.32	-	0.27	0.00	0.00	0.00	0.00	0.00	0.00	0.68
(a) Japanese fishing vessel	0.34	0.15	0.33	0.57	-	0.27	0.00	0.00	0.00	0.00	-	0.00	0.68
Longline	0.42	0.15	0.33	0.58	-	-	0.00	0.00	0.00	0.00	-	0.00	0.26
Pole & line	0.26	-	-	0.03	-	0.27	-	-	-	-	-	-	4.00
(b) Other foreign fishing vessel	0.00	-	0.00	0.00	-	-	0.00	0.00	0.00	0.00	0.00	0.00	-

Source: Marshall Islands Marine Resource Authority (MIMRA)

Table 8.1 COMMODITY IMPORTS AND EXPORTS AND BALANCE OF TRADE: 1979-1997
(U.S. dollars in thousands)

Year	Imports	Exports	Balance
1979	14,238	3,397	(10,841)
1980	17,155	2,577	(14,578)
1981	22,208	2,968	(19,240)
1982	18,777	2,225	(16,552)
1983	17,503	3,201	(14,360)
1984	22,608	5,522	(17,086)
1985	29,176	2,691	(26,485)
1986	30,571	1,159	(29,412)
1987	33,541	1,918	(31,623)
1988	33,764	2,108	(31,656)
1989	44,389	2,489	(41,900)
1990	55,951	1,719	(54,232)
1991	56,442	2,890	(53,552)
1992	61,839	9,201	(52,638)
1993	61,082	7,660	(53,422)
1994	70,398	22,170	(48,228)
1995	75,055*	23,071	(51,984)
1996	72553**	18,923	(53,630)
1997	60995***	12,665	(48,330)

Note: Import values are on f.o.b. basis up to 1988.

Imports exclude government imports and tax exempted goods for the years 1979 to 1988.

*Ebeye recorded imports were adjusted upwards by 7.0 percent to include postal imports since records of such imports were incomplete. The 7.0 percent co-efficient is the ratio of postal imports to total imports in Ebeye for Calendar Year 1994.

**Ebeye import figures for 1996 were not available from customs authorities. Therefore, Ebeye imports were estimated as a proportion (20.36%) of Majuro imports. This proportion is the average ratio of Ebeye total imports to Majuro total imports for the period 1993-1995.

***Import figures for July and December 1997 were not available from customs authorities. Therefore, import figures were adjusted upwards by 10% to include July and December imports.

Sources: Ministry of Finance
Office of Planning and Statistics

Table 8.2 EXPORTS BY COMMODITY: 1979 - 1997
(f.o.b values in thousand U.S dollars)

Year	Total exports	Copra cake	Coconut oil	Handicrafts	Pet Fish	Trochus Shells	Scrap metal	Chilled fish	Frozen Fish	Shark fins	Re-Export of Dies	Others
1979	3,397	84	2,993	258	62	-	-	-	-	-	-	-
1980	2,577	462	1,832	233	50	-	-	-	-	-	-	-
1981	2,968	341	2,253	301	73	-	-	-	-	-	-	-
1982	2,225	304	1,766	95	60	-	-	-	-	-	-	-
1983	3,201	320	2,794	29	58	-	-	-	-	-	-	-
1984	5,522	241	5,202	30	49	-	-	-	-	-	-	-
1985	2,682	195	2,417	33	37	-	-	-	-	-	-	-
1986	1,159	128	974	26	31	-	-	-	-	-	-	-
1987	1,918	38	1,654	31	8	179	8	-	16	-	-	-
1988	2,116	6	1,743	1	8	350	-	1	8	-	-	-
1989	2,489	99	1,679	-	-	467	-	-	8	8	-	-
1990	1,719	94	1,148	2	268	179	1	1,069	32	-	-	-
1991	2,890	18	1,396	4	709	176	-	1,725	6,822	-	-	-
1992	9,201	109	1,137	4	483	176	-	1,548	5,744	-	-	-
1993	7,660	168	2,142	5	383	-	-	1,309	3,640	-	-	10
1994	22,170	163	1,952	19	297	-	-	10,414	4,687	-	4,638	-
1995	23,071	201	3,147	20	349	-	-	12,671	-	-	6,683	-
1996	18,919	354	3,269	4	196	-	-	13,172	746	104	1,078	-
1997	12,665	367	2,745	6	41	-	-	11,855	564	5	-	194

Sources: Tobolar
Air Marshall Islands
MIMRA
Office of Planning and Statistics

Table 8.2 EXPORTS BY COMMODITY: 1979 - 1997
(f.o.b values in thousand U.S dollars)

Year	Total exports	Copra cake	Coconut oil	Handicrafts	Pet Fish	Trochus Shells	Scrap metal	Chilled fish	Frozen Fish	Shark fins	Re-Export of Diesel	Others
1979	3,397	84	2,993	258	62	-	-	-	-	-	-	-
1980	2,577	462	1,832	233	50	-	-	-	-	-	-	-
1981	2,968	341	2,253	301	73	-	-	-	-	-	-	-
1982	2,225	304	1,766	95	60	-	-	-	-	-	-	-
1983	3,201	320	2,794	29	58	-	-	-	-	-	-	-
1984	5,522	241	5,202	30	49	-	-	-	-	-	-	-
1985	2,682	195	2,417	33	37	-	-	-	-	-	-	-
1986	1,159	128	974	26	31	-	-	-	-	-	-	-
1987	1,918	38	1,654	31	8	179	8	-	16	-	-	-
1988	2,116	6	1,743	1	8	350	-	1	8	-	-	-
1989	2,489	99	1,679	-	-	467	-	-	8	-	-	-
1990	1,719	94	1,148	2	268	179	1	1,069	32	-	-	-
1991	2,890	18	1,396	4	709	176	-	1,725	6,822	-	-	-
1992	9,201	109	1,137	4	483	176	-	1,548	5,744	-	-	-
1993	7,660	168	2,142	5	383	-	-	1,309	3,640	-	-	10
1994	22,170	163	1,952	19	297	-	-	10,414	4,687	-	4,638	-
1995	23,071	201	3,147	20	349	-	-	12,671	-	-	6,683	-
1996	18,919	354	3,269	4	196	-	-	13,172	746	104	1,078	-
1997	12,665	367	2,745	6	41	-	-	11,855	564	5	-	194

Sources: Tobolar
Air Marshall Islands
MIMRA
Office of Planning and Statistics

Table 8.3 IMPORTS BY TRADING PARTNERS , 1985-1997
(c.i.f. & f.o.b. values in thousand U.S dollars)

Year	All countries		Australia		Fiji		Guam		Hawaii		Hongkong		Japan		New Zealand		Philippines		Singapore		Taiwan		U.S.A. (Mainland)		Other countries	
	Value	%	Value	%	Value	%	Value	%	Value	%	Value	%	Value	%	Value	%	Value	%	Value	%	Value	%	Value	%	Value	%
1985 (f.o.b.)	29,176	100.0	1,370	4.7	-	-	6,337	21.7	1,253	4.3	311	1.1	6,097	20.9	163	0.6	41	0.1	-	-	108	0.4	13,352	45.8	144	0.5
1986 (f.o.b.)	30,571	100.0	1,579	5.2	-	-	8,098	26.5	1,386	4.5	382	1.2	5,945	19.4	204	0.7	23	0.1	-	-	180	0.6	12,684	41.5	90	0.3
1987 (f.o.b.)	33,541	100.0	2,080	6.2	-	-	7,379	22.0	1,610	4.8	436	1.3	6,641	19.8	268	0.8	34	0.1	-	-	201	0.6	14,724	43.9	168	0.5
1988 (f.o.b.)	33,764	100.0	1,052	3.1	-	-	6,065	18.0	2,107	6.2	522	1.5	5,929	17.6	31	0.1	168	0.5	-	-	388	1.1	17,330	51.3	172	0.5
1989 (c.i.f.)	43,564	100.0	a/	-	452	1.0	2,588	5.9	3,932	9.0	700	1.6	6,488	14.9	736	1.7	40	0.1	-	-	196	0.4	26,332	65.0	100	0.2
1990 (c.i.f.)	55,591	100.0	1,148	2.1	1,133	2.0	4,939	8.9	9,360	16.8	1,573	2.8	8,335	15.0	761	1.4	115	0.2	-	-	261	0.5	27,314	49.1	652	1.2
1991 (c.i.f.)	56,442	100.0	895	1.6	821	1.5	9,216	16.3	5,024	8.9	482	0.9	5,446	9.6	247	0.4	241	0.4	-	-	98	0.2	33,008	58.5	964	1.7
1992 (c.i.f.)	61,839	100.0	2,106	3.4	115	0.2	11,506	18.6	b/	-	836	1.4	7,652	12.4	1,328	2.1	154	0.2	-	-	233	0.4	37,657	60.9	252	0.4
1993(c.i.f.)	61,082	100.0	1,058	1.7	198	0.3	6,692	11.0	b/	-	664	1.1	5,906	9.7	709	1.2	127	0.2	-	-	269	0.4	42,443	69.5	3,016	4.9
1994(c.i.f.)	70,398	100.0	1,332	1.9	447	0.6	16,999	24.1	b/	-	1,466	2.1	4,169	5.9	511	0.7	269	0.4	-	-	767	1.1	42,924	61.0	1,514	2.2
1995(c.i.f.)	75,055	100.0	1,410	1.9	612	0.8	10,933	14.6	b/	-	1,259	1.7	5,571	7.4	1,066	1.4	403	0.5	-	-	622	0.8	38,363	51.1	14,816	19.7
1996(c.i.f.)	72,553	100.0	1,364	1.9	430	0.6	1,601	2.2	b/	-	1,306	1.8	2,944	4.1	759	1.0	240	0.3	-	-	1,301	1.8	38,758	53.4	1,244	1.7
1997(c.i.f.)	60,995	100.0	1,836	3.0	309	0.5	2,290	3.8	b/	-	1,054	1.7	2,412	4.0	563	0.9	303	0.5	-	-	926	1.5	35,276	57.8	1,769	2.9

Note: a/ included under other countries
b/ included under U.S.A.

Data given for 1989 were estimated using data for the last quarter of that year

1995 Ebeye Postal imports estimate was included under USA (Mainland)

1996 Ebeye import figures estimate was included under USA (Mainland)

1997 July and December import figures estimate was included under USA, Fiji, Singapore and all others.

Sources: Ministry of Finance
Office of Planning and Statistics

Table 8.4. IMPORTS CLASSIFIED BY TWO-DIGIT HARMONIZED SYSTEM CODES: 1991-1997
(CIF values in US dollars)

HS code	HS description	1991	1992	1993	1994	1995*	1996	1997
Total		56,441,509	61,839,472	61,082,167	70,398,603	75,054,694	72,553,315	60,394,916
01	ANIMALS; LIVE	0	0	0	0	0	0	2,238,000
02	MEAT AND EDIBLE MEAT OFFAL	2,367,902	2,356,806	3,308,609	3,334,191	3,503,849	4,123,946	3,069,983
03	FISH AND CRUSTACEANS, MOLLUSCS AND OTHER AQUATIC INVERTEBRATES	7,285	18,575	188,350	1,472,017	543,340	434,709	169,906
04	DAIRY PRODUCE; BIRDS' EGGS; NATURAL HONEY; EDIBLE PRODUCTS OF ANIMAL ORIGIN, NOT ELSEWHERE SPECIFIED OR INCLUDED	735,483	561,339	814,070	806,409	831,627	641,883	730,438
05	ANIMAL ORIGINATED PRODUCTS; NOT ELSEWHERE SPECIFIED OR INCLUDED	0	79	0	0	0	0	0
06	TREES AND OTHER PLANTS, LIVE; BULBS, ROOTS AND THE LIKE; CUT FLOWERS AND ORNAMENTS	5,973	3,981	10,065	10,981	9,873	0	3,112
07	VEGETABLES AND CERTAIN ROOTS AND TUBERS; EDIBLE	204,196	187,447	238,016	262,070	412,460	369,729	386,462
08	FRUIT AND NUTS, EDIBLE; PEEL OF CITRUS FRUIT OR MELONS	104,506	75,887	152,608	130,501	167,105	204,621	230,117
09	COFFEE, TEA, MATE AND SPICES	191,750	180,658	341,101	397,977	442,353	465,341	296,222
10	CEREALS	1,330,705	1,293,866	1,820,578	2,127,349	1,890,313	1,213,586	1,580,750
11	PRODUCTS OF THE MILLING INDUSTRY; MALT; STARCHES; INULIN; WHEAT GLUTEN	577,196	762,746	612,766	814,926	679,278	646,196	609,114
12	OIL SEEDS AND OLEAGINOUS FRUITS; MISCELLANEOUS GRAINS; SEEDS AND FRUIT, INDUSTRIAL	0	3,979	2,495	76	461	723	0
13	MEDICINAL PLANTS; STRAW AND FODDER	0	1,549	14,381	2,588	60,149	10,893	491
14	LAC; GUMS, RESINS AND OTHER VEGETABLE SAPS AND EXTRACTS	656	100,867	167,494	265,710	331,014	286,848	410,369
15	ANIMAL OR VEGETABLE FATS AND OILS AND THEIR CLEAVAGE PRODUCTS; PREPARED ANIMAL FAT	107,768	0	0	0	0	0	0
16	MEAT, FISH OR CRUSTACEANS, MOLLUSCS OR OTHER AQUATIC INVERTEBRATES; PREPARATIONS THEREOF	1,688,368	1,428,741	2,005,769	1,829,712	2,034,229	1,234,006	1,683,818
17	SUGARS AND SUGAR CONFECTIONERY	1,005,095	851,759	1,445,226	1,370,111	1,174,771	1,094,761	870,485
18	COCOA AND COCOA PREPARATIONS	103,849	22,598	87,981	101,525	95,252	34,214	37,035
19	PREPARATIONS OF CEREALS, FLOUR, STARCH OR MILK; PASTRYCOOKS' PRODUCTS	2,808,849	2,530,790	1,148,472	1,162,412	1,317,344	1,230,892	1,225,658
20	PREPARATIONS OF VEGETABLES, FRUIT, NUTS OR OTHER PARTS OF PLANTS	398,191	503,855	667,022	738,727	842,995	799,126	826,738
21	MISCELLANEOUS EDIBLE PREPARATIONS	4,360,252	4,261,704	4,807,436	5,239,262	3,915,435	1,417,567	7,133,069
22	BEVERAGES, SPIRITS AND VINEGAR	2,356,083	2,187,495	2,783,291	2,500,841	1,823,453	939,886	1,317,769
23	RESIDUES AND WASTE FROM THE FOOD INDUSTRIES; PREPARED ANIMAL FODDER	81,909	85,107	92,508	60,418	61,700	68,590	69,660
24	TOBACCO AND MANUFACTURED TOBACCO SUBSTITUTES	1,041,283	1,158,156	1,365,527	1,537,149	1,309,388	516,815	246,646
25	SALT; SULPHUR; EARTH'S, STONE; PLASTERING MATERIALS, LIME AND CEMENT	546,213	595,764	569,743	968,767	716,213	662,269	314,843
26	ORES, SLAG AND ASH	0	0	397	0	0	0	0
27	MINERAL FUELS, MINERAL OILS AND PRODUCTS OF THEIR DISTILLATION; BITUMINOUS SUBSTANCES	5,783,190	8,524,113	8,527,544	15,323,076	22,519,641	23,940,164	12,113,455
28	MINERAL WAXES	0	0	0	0	0	0	0
29	INORGANIC CHEMICALS; ORGANIC AND INORGANIC COMPOUNDS OF PRECIOUS METALS; OF RARE EARTH METALS; OF RADIO-ACTIVE ELEMENTS AND OF ISOTOPES	1,040	33,153	1,730	3,204	29,450	440	440
30	ORGANIC CHEMICALS	14,088	1,808	22,083	36,975	1,020	22,781	22,781
31	PHARMACEUTICAL PRODUCTS	258,370	380,753	859,365	885,602	670,859	654,704	530,135
32	FERTILIZERS	0	704	352	712	92	92	92
33	TANNING OR DYING EXTRACTS; TANNINS AND THEIR DERIVATIVES; DYES, PIGMENTS AND OTHER COLOURING MATTER; PAINTS, VARNISHES; PUTTY, OTHER MASTICS; INKS	132,038	306,741	286,767	198,160	296,962	138,514	131,889
34	ESSENTIAL OILS AND RESINOIDS; PERFUMERY, COSMETIC OR TOILET PREPARATIONS	181,165	205,460	275,433	164,524	142,122	160,613	142,411

Table 8.5 IMPORTS BY MAJURO PRODUCT CATEGORY: 1992-1997
(Thousands U.S dollars)

SITC Classification	1992		1993		1994		1995		1996		1997	
	Value	Percentage	Value	Percentage	Value	Percentage	Value	Percentage	Value	Percentage	Value	Percentage
0. Food and Live Animals	15,132	24.46	17,757	29.07	19,861	28.21	18,056	24.06	6,240	8.60	18,935	31.04
1. Beverages and Tobacco	3,347	5.41	4,129	6.76	4,038	5.74	3,133	4.17	5,752	7.93	1,564	2.56
2. Mineral Fuels and Lubricants	8,524	13.77	8,528	13.96	15,323	21.77	22,520	30.00	28,344	39.07	12,113	19.86
3. Crude Materials	4,014	6.49	5,160	8.45	5,036	7.15	5,119	6.82	7,873	10.85	2,293	3.76
4. Animal and Vegetables oils	101	0.16	167	0.27	266	0.38	331	0.44	3,535	4.87	3,407	5.59
5. Chemical Products	1,938	3.13	2,701	4.42	2,356	3.35	1,915	2.55	106	0.15	411	0.67
6. Manufactured Goods	7,500	12.12	5,265	8.62	5,953	8.46	4,873	6.49	3,033	4.18	3,968	6.51
7. Machinery and Transport Equipme	11,153	18.08	10,495	17.18	8,716	12.38	9,599	12.79	1,442	1.99	7,679	12.59
8. Miscellaneous Manufactured Artic	976	1.58	1,379	2.26	1,882	2.67	1,724	2.30	7,770	10.71	1,768	2.90
9. Unclassified commodities	9,154	14.80	5,501	9.01	6,967	9.90	7,785	10.37	8,457	11.66	8,857	14.52
TOTAL	61,839	100.0	61,082	100.0	70,398	100.0	75,055	100.0	72,553	100.0	60,995	100.00

Sources: Ministry of Finance
Office of Planning and Statistics

Note: 1995 Ebeye postal imports estimate was distributed among commodities usually imported through postal services.
1996 Ebeye imports estimate was distributed among commodities usually imported through.
1997 Import figures for July and December were mostly distributed under SITC 0.

9.1 Travellers to Majuro by years, 1969-1997

Year	Total	Visitor	Other travellers
1969	905		
1970	1246		
1971	1862		
1972	1359		
1973	3153		
1974	2705		
1975	3347		
1976	2919		
1978	3801		
1979	2833		
1980	-		
1981	1242		
1982	2258		
1983	3630	2950	680
1984	3913	3144	769
1985	2914	2494	420
1986	3290	2845	445
1987	3131	2441	690
1988	3578	3165	413
1989	3701	3193	508
1990	4856	-	-
1991	6868	5897	971
1992	7212	5684	1528
1993	6762	5055	1707
1994	6363	4909	1454
1995	6838	5504	1334
1996	7563*	6229	1334
1997	7418	6354	1064

* This includes both visitors and other travellers whose purpose stated. Classifications in tables 9.2 through 9.6 are limited to number of visitors only.

Source: Ministry of Foreign Affairs
Office of Planning and Statistics

Table 9.2 VISITORS TO MAJURO BY MONTH AND MAIN PURPOSE OF VISIT, 1997.

Month	Total		Transit/stopover		Business		Holiday/vacation		Visiting friends/relatives		Other		Not Stated
	Number	Percent	Number	Percent	Number	Percent	Number	Percent	Number	Percent	Number	Percent	Number
All	6354	100	1819	100	2522	100	883	100	647	100	287	100	196
January	792	12.5	512	28.1	137	5.4	54	6.1	36	5.6	26	9.1	27
February	410	6.5	145	8.0	150	5.9	56	6.3	39	6.0	13	4.5	7
March	477	7.5	117	6.4	174	6.9	98	11.1	58	9.0	18	6.3	12
April	452	7.1	112	6.2	200	7.9	59	6.7	38	5.9	31	10.8	12
May	473	7.4	128	7.0	205	8.1	45	5.1	57	8.8	28	9.8	10
June	513	8.1	77	4.2	236	9.4	88	10.0	52	8.0	31	10.8	29
July	533	8.4	129	7.1	209	8.3	71	8.0	67	10.4	28	9.8	29
August	829	13.0	131	7.2	455	18.0	102	11.6	52	8.0	53	18.5	36
September	507	8.0	102	5.6	259	10.3	95	10.8	39	6.0	3	1.0	9
October	485	7.6	132	7.3	202	8.0	66	7.5	49	7.6	35	12.2	1
November	514	8.1	117	6.4	219	8.7	81	9.2	67	10.4	8	2.8	22
December	369	5.8	117	6.4	76	3.0	68	7.7	93	14.4	13	4.5	2

Source: Office of Planning and Statistics, RMI

Table 9.3 VISITORS TO MAJURO BY COUNTRY OF USUAL RESIDENCE AND MAIN PURPOSE OF VISIT, 1997

Country	Total		Transit/Stopover		Business		Holiday/vacation		Visiting friends/relatives		Other		Not Stated
	Number	Percent	Number	Percent	Number	Percent	Number	Percent	Number	Percent	Number	Percent	Number
All countries	6354	99	1819	100	2522	100	883	100	647	100	287	100	196
Canada	73	1.1	28	1.5	19	0.8	14	1.6	9	1.4	2	0.7	1
USA	2028	31.9	506	27.8	882	35.0	312	35.3	172	26.6	132	46.0	24
Other America	20	0.3	8	0.4	5	0.2	3	0.3	1	0.2	1	0.3	2
Australia	181	2.8	14	0.8	111	4.4	24	2.7	25	3.9	6	2.1	1
Fiji	187	2.9	19	1.0	117	4.6	5	0.6	16	2.5	22	7.7	8
FSM	517	8.1	84	4.6	288	11.4	13	1.5	94	14.5	22	7.7	16
Kiribati	653	10.3	534	29.4	50	2.0	22	2.5	28	4.3	8	2.8	11
Marshall Islands	100	1.6	13	0.7	23	0.9	21	2.4	17	2.6	17	5.9	9
Narau	55	0.9					26	2.9	29	4.5		0.0	
New Zealand	106	1.7	14	0.8	65	2.6	6	0.7	15	2.3	6	2.1	
Palau	110	1.7	33	1.8	70	2.8	2	0.2	2	0.3			3
Tuvalu	54	0.8	28	1.5	7	0.3	1	0.1	17	2.6	1	0.3	
Other Pacific	536	8.4	49	2.7	366	14.5	22	2.5	53	8.2	29	10.1	17
China	232	3.7	22	1.2	88	3.5	58	6.6	41	6.3	3	1.0	20
Japan	542	8.5	82	4.5	162	6.4	211	23.9	51	7.9	17	5.9	19
Korea	102	1.6	9	0.5	53	2.1	24	2.7	13	2.0	1	0.3	2
Philippines	155	2.4	80	4.4	49	1.9	2	0.2	9	1.4	9	3.1	6
Other Asia	171	2.7	48	2.6	69	2.7	24	2.7	12	1.9	3	1.0	15
British	81	1.3	33	1.8	22	0.9	15	1.7	11	1.7			
Germany	43	0.7	22	1.2	8	0.3	8	0.9	2	0.3	1	0.3	2
Other European U	57		30	1.6	10	0.4	10	1.1	1	0.2			6
Other Europe	51	0.8	28	1.5	3	0.1	19	2.2	1	0.2			
Others	14	0.2	4	0.2	8	0.3	2	0.2					
Not stated	286	4.5	131	7.2	47	1.9	39	4.4	28	4.3	7	2.4	34

Source: Office of Planning and Statistics, RMI

Table 9.3 VISITORS TO MAJURO BY COUNTRY OF USUAL RESIDENCE AND MAIN PURPOSE OF VISIT: 1996

Country	Total		Transit/Stopover		Business		Holiday/vacation		Visiting friends/relatives		Other		Not Stated Number
	Number	Percent	Number	Percent	Number	Percent	Number	Percent	Number	Percent	Number	Percent	
All countries	6229	99	1468	100	2536	99	1132	97	663	100	293	100	137
Canada	61	1.0	14	1.0	18	0.7	14	1.2	13	2.0	2	0.7	
USA	1642	26.4	250	17.0	746	29.4	293	25.9	249	37.6	76	25.9	28
Other America	36	0.6	5	0.3	10	0.4	15	1.3	2	0.3	3	1.0	1
Australia	216	3.5	12	0.8	147	5.8	20	1.8	25	3.8	8	2.7	4
Fiji	183	2.9	10	0.7	139	5.5	7	0.6	14	2.1	11	3.8	2
FSM	444	7.1	93	6.3	186	7.3	30	2.7	88	13.3	30	10.2	17
Kiribati	700	11.2	580	39.5	51	2.0	21	1.9	39	5.9	7	2.4	2
Marshall Islands	113	1.8	21	1.4	23	0.9	19	1.7	29	4.4	12	4.1	9
Narau	11	0.2	1	0.1	4	0.2	3	0.3	3	0.5		0.0	
New Zealand	115	1.8	10	0.7	90	3.5	8	0.7	5	0.8	2	0.7	
Palau	55	0.9	9	0.6	28	1.1	5	0.4	4	0.6	8	2.7	1
Tuvalu	49	0.8	33	2.2	7	0.3	1	0.1	4	0.6	3	1.0	1
Other Pacific	617	9.9	66	4.5	417	16.4	48	4.2	33	5.0	46	15.7	7
China	388	6.2	31	2.1	136	5.4	123	10.9	47	7.1	40	13.7	11
Japan	550	8.8	70	4.8	197	7.8	232	20.5	23	3.5	10	3.4	18
Korea	120	1.9	3	0.2	56	2.2	45	4.0	11	1.7	3	1.0	2
Philippines	156	2.5	79	5.4	44	1.7	4	0.4	6	0.9	12	4.1	11
Other Asia	232	3.7	28	1.9	82	3.2	82	7.2	28	4.2	10	3.4	2
British	86	1.4	13	0.9	44	1.7	22	1.9	5	0.8	1	0.3	1
Germany	47	0.8	14	1.0	7	0.3	23	2.0	2	0.3		0	1
Other European Union	56		3		18		32		1		1		1
Other Europe	42	0.7	2	0.1	12	0.5	28	2.5	2	0.3		0.0	
Others	5	0.1		0.0	1	0.0	2	0.2	2	0.3		0.0	
Not stated	305	4.9	121	8.2	73	2.9	55	4.9	30	4.5	8	2.7	18

Source: Office of Planning and Statistics, RMI

Table 9.4 VISITORS TO MAJURO BY NATIONALITY AND MAIN PURPOSE OF VISIT: 1997

Country	Total		Transit/Stopover		Business		Holiday/vacation		Visiting friends/relatives		Other		Not Stated Number
	Number	Percent	Number	Percent	Number	Percent	Number	Percent	Number	Percent	Number	Percent	
All countries	6354	100	1819	100	2522	100	883	100	647	100	287	100	196
Canada	85	1.3	31	1.7	24	1.0	15	1.7	11	1.7	1	0.3	3
USA	2373	37.3	540	29.7	1103	43.7	336	38.1	201	31.1	158	55.1	35
Other America	13	0.2	4	0.2	4	0.2	2	0.2	1	0.2	1	0.3	1
Australia	226	3.6	24	1.3	132	5.2	30	3.4	29	4.5	10	3.5	1
Fiji	127	2.0	13	0.7	67	2.7	3	0.3	18	2.8	18	6.3	8
FSM	463	7.3	73	4.0	259	10.3	11	1.2	83	12.8	20	7.0	17
Kiribati	688	10.8	570	31.3	48	1.9	21	2.4	23	3.6	12	4.2	14
Marshall Islands	48	0.8	5	0.3	7	0.3	5	0.6	16	2.5	5	1.7	10
Narau	64	1.0			1	0.0	31	3.5	32	4.9			
New Zealand	133	2.1	15	0.8	83	3.3	7	0.8	21	3.2	7	2.4	
Palau	115	1.8	30	1.6	76	3.0	2	0.2	2	0.3			5
Tuvalu	75	1.2	44	2.4	7	0.3	3	0.3	16	2.5	1	0.3	4
Other Pacific	100	1.6	22	1.2	62	2.5	1	0.1	6	0.9	5	1.7	4
China	296	4.7	25	1.4	115	4.6	71	8.0	56	8.7	5	1.7	24
Japan	598	9.4	89	4.9	187	7.4	221	25.0	63	9.7	16	5.6	22
Korea	130	2.0	15	0.8	62	2.5	29	3.3	18	2.8	4	1.4	2
Philippines	217	3.4	106	5.8	72	2.9	4	0.5	17	2.6	9	3.1	9
Other Asia	179	2.8	62	3.4	72	2.9	10	1.1	9	1.4	6	2.1	20
British	141	2.2	44	2.4	60	2.4	25	2.8	10	1.5	2	0.7	
Germany	64	1.0	26	1.4	20	0.8	11	1.2	3	0.5	1	0.3	3
Other European Union	97	1.5	36	2.0	35	1.4	16	1.8	2	0.3	2	0.7	6
Other Europe	52	0.8	28	1.5	6	0.2	17	1.9	1	0.2			
Others	14	0.2	4	0.2	7	0.3	2	0.2	1	0.2			
Not stated	56	0.9	13	0.7	13	0.5	10	1.1	8	1.2	4	1.4	8

Source: Office of Planning and Statistics, RMI

Table 9.5 AVERAGE INTENDED LENGTH OF STAY OF VISITORS TO MAJURO BY MAIN PURPOSE OF VISIT, 1997
(Visitors intending to stay one or more nights)

Purpose	Number of visitors	Average length of stay (nights)
All	6354	5.60
Transit/Stopover	1819	1.16
Business	2522	6.47
Holiday/Vacation	883	5.92
Visiting friends/relatives	647	10.32
Other	287	13.03
Blank	196	2.10

Source: Office of Planning and Statistics, RMI

Table 9.6 VISITORS TO MAJURO BY OCCUPATION GROUP AND MAIN PURPOSE OF VISIT, 1997

Occupation	Total		Transit/Stopover		Business		Holiday/vacation		Visiting friends/relatives		Other		Not stated Number
	Number	Percent	Number	Percent	Number	Percent	Number	Percent	Number	Percent	Number	Percent	
All	6354	100	1819	100	2522	100	883	100	647	100	287	100	196
Legislators, Senior Officials and Managers	536	8.4	121	6.7	305	12.1	61	6.9	25	3.9	12	4.2	12
Professionals	1662	26.2	292	16.1	956	37.9	186	21.1	123	19.0	76	26.5	29
Technicians and Associate Professionals	573	9.0	131	7.2	290	11.5	64	7.2	39	6.0	41	14.3	8
Clerks	89	1.4	31	1.7	15	0.6	25	2.8	15	2.3	2	0.7	1
Service workers and Shop and Market Sales Workers	128	2.0	19	1.0	64	2.5	33	3.7	8	1.2	2	0.7	2
Skilled Agricultural and Fishery workers	90	1.4	50	2.7	16	0.6	6	0.7	13	2.0	2	0.7	3
Craft and related workers	86	1.4	17	0.9	33	1.3	14	1.6	13	2.0	5	1.7	4
Plant and Machine Operators and Assemblers	381	6.0	339	18.6	24	1.0	8	0.9	2	0.3	5	1.7	3
Elementary Occupations	18	0.3	1	0.1	2	0.1	6	0.7	7	1.1	2	0.7	
Armed Forces	9	0.1	1	0.1	5	0.2	3	0.3					
Workers not classifiable by occupation or occupation not stated	2782	43.8	817	44.9	812	32.2	477	54.0	402	62.1	140	48.8	134

Source: Office of Planning and Statistics, RMI

Table 9.7 VISITORS TO MAJURO BY SEX, AGE GROUP AND MAIN PURPOSE OF VISIT, 1997

Sex and age-group	Total		Transit/Stopover		Business		Holiday/vacation		Visiting friends/relatives		Other		Not Stated Number
	Number	Percent	Number	Percent	Number	Percent	Number	Percent	Number	Percent	Number	Percent	
Both sexes, total	6354	100	1819	100	2522	100.0	883	100	647	100	287	100	196
0-4 years	80	1.3	22	1.2	7	0.3	14	1.6	26	4.0	6	2.1	5
5-9 years	71	1.1	19	1.0	5	0.2	15	1.7	22	3.4	1	0.3	9
10-14 years	109	1.7	49	2.7	3	0.1	15	1.7	24	3.7	13	4.5	5
15-19 years	129	2.0	20	1.1	24	1.0	23	2.6	34	5.3	16	5.6	12
20-24 years	362	5.7	163	9.0	65	2.6	27	3.1	61	9.4	31	10.8	15
25-29 years	534	8.4	217	11.9	141	5.6	63	7.1	63	9.7	32	11.1	18
30-34 years	659	10.4	184	10.1	268	10.6	101	11.4	59	9.1	27	9.4	20
35-39 years	708	11.1	169	9.3	329	13.0	103	11.7	56	8.7	34	11.8	17
40-44 years	750	11.8	171	9.4	357	14.2	106	12.0	62	9.6	30	10.5	24
45-49 years	803	12.6	139	7.6	478	19.0	97	11.0	52	8.0	18	6.3	19
50-54 years	632	9.9	103	5.7	343	13.6	82	9.3	57	8.8	26	9.1	21
55-59 years	477	7.5	90	4.9	249	9.9	69	7.8	44	6.8	18	6.3	7
60-64 years	303	4.8	73	4.0	122	4.8	59	6.7	23	3.6	18	6.3	8
65-69 years	196	3.1	87	4.8	46	1.8	39	4.4	16	2.5	5	1.7	3
70 years and over	419	6.6	270	14.8	50	2.0	54	6.1	30	4.6	8	2.8	7
Not stated	122	1.9	43	2.4	35	1.4	16	1.8	18	2.8	4	1.4	6
Male, total	4515	100	1309	100	1961	100	606	100	347	100	164	100	128
0-4 years	46	1.0	11	0.8	5	0.3	6	1.0	18	5.2	4	2.4	2
5-9 years	37	0.8	10	0.8	2	0.1	8	1.3	12	3.5		0.0	5
10-14 years	48	1.1	27	2.1	1	0.1	6	1.0	7	2.0	5	3.0	2
15-19 years	61	1.4	12	0.9	8	0.4	11	1.8	20	5.8	7	4.3	3
20-24 years	250	5.5	138	10.5	40	2.0	14	2.3	35	10.1	12	7.3	11
25-29 years	376	8.3	181	13.8	105	5.4	36	5.9	32	9.2	13	7.9	9
30-34 years	480	10.6	137	10.5	202	10.3	72	11.9	33	9.5	18	11.0	18
35-39 years	533	11.8	141	10.8	253	12.9	76	12.5	30	8.6	20	12.2	13
40-44 years	560	12.4	147	11.2	263	13.4	78	12.9	39	11.2	18	11.0	15
45-49 years	632	14.0	115	8.8	386	19.7	75	12.4	29	8.4	15	9.1	12
50-54 years	467	10.3	81	6.2	275	14.0	59	9.7	21	6.1	18	11.0	13
55-59 years	361	8.0	55	4.2	207	10.6	51	8.4	31	8.9	11	6.7	6
60-64 years	232	5.1	47	3.6	112	5.7	44	7.3	8	2.3	13	7.9	8
65-69 years	123	2.7	48	3.7	36	1.8	26	4.3	6	1.7	4	2.4	3
70 years and over	228	5.0	129	9.9	42	2.1	34	5.6	15	4.3	4	2.4	4
Not stated	81	1.8	30	2.3	24	1.2	10	1.7	11	3.2	2	1.2	4
Female, total	1839	100	510	100	561	100	277	100	300	100	123	100	68
0-4 years	34	1.8	11	2.2	2	0.4	8	2.9	8	2.7	2	1.6	3
5-9 years	34	1.8	9	1.8	3	0.5	7	2.5	10	3.3	1	0.8	4
10-14 years	61	3.3	22	4.3	2	0.4	9	3.2	17	5.7	8	6.5	3
15-19 years	68	3.7	8	1.6	16	2.9	12	4.3	14	4.7	9	7.3	9
20-24 years	112	6.1	25	4.9	25	4.5	13	4.7	26	8.7	19	15.4	4
25-29 years	158	8.6	36	7.1	36	6.4	27	9.7	31	10.3	19	15.4	9
30-34 years	179	9.7	47	9.2	66	11.8	29	10.5	26	8.7	9	7.3	2
35-39 years	175	9.5	28	5.5	76	13.5	27	9.7	26	8.7	14	11.4	4
40-44 years	190	10.3	24	4.7	94	16.8	28	10.1	23	7.7	12	9.8	9
45-49 years	171	9.3	24	4.7	92	16.4	22	7.9	23	7.7	3	2.4	7
50-54 years	165	9.0	22	4.3	68	12.1	23	8.3	36	12.0	8	6.5	8
55-59 years	116	6.3	35	6.9	42	7.5	18	6.5	13	4.3	7	5.7	1
60-64 years	71	3.9	26	5.1	10	1.8	15	5.4	15	5.0	5	4.1	
65-69 years	73	4.0	39	7.6	10	1.8	13	4.7	10	3.3	1	0.8	
70 years and over	191	10.4	141	27.6	8	1.4	20	7.2	15	5.0	4	3.3	3
Not stated	41	2.2	13	2.5	11	2.0	6	2.2	7	2.3	2	1.6	2

Source: Office of Planning and Statistics, RMI

Table 9.8 AVERAGE INTENDED LENGTH OF STAY OF VISITORS TO MAJURO BY
 MAIN PURPOSE OF VISIT, 1997.
 (visitors intending to stay one or more nights)

Purpose	Number of visitors	Average length of stay (nights)
All	5504	5.27
Transit/Stopover	1503	1.67
Business	2053	7.82
Holiday/Vacation	694	5.49
Visiting friends/relatives	800	10.31
Other	347	14.52
Not Stated	107	2.64

Source: Office of Planning and Statistics

Table 9.8 AVERAGE INTENDED LENGTH OF STAY OF VISITORS TO MAJURO BY MAIN PURPOSE OF VISIT, 1997.
(visitors intending to stay one or more nights)

Purpose	Number of visitors		Average length of stay (nights)
	Number	Percent	
All	5504	100	5.27
Transit/Stopover	1503	27.3	1.67
Business	2053	37.3	7.82
Holiday/Vacation	694	12.6	5.49
Visiting friends/relatives	800	14.5	10.31
Other	347	6.3	14.52
Not Stated	107	1.9	2.64

Source: Office of Planning and Statistics

Table 9.9 VISITORS TO MAJURO BY OCCUPATION GROUP AND MAIN PURPOSE OF VISIT: 1997

Occupation	Total		Transit/Stopover		Business		Holiday/vacation		Visiting friends/relatives		Other		Not stated Number
	Number	Percent	Number	Percent	Number	Percent	Number	Percent	Number	Percent	Number	Percent	
All	5504	100	1503	100	2053	100	694	100	800	100	347	100	107
Legislators, Senior Officials and Managers	631	11.5	146	9.7	352	17.1	56	8.1	45	5.6	23	6.6	9
Professionals	1498	27.2	292	19.4	761	37.1	155	22.3	161	20.1	104	30.0	25
Technicians and Associate Professionals	929	16.9	170	11.3	491	23.9	120	17.3	95	11.9	46	13.3	7
Clerks	89	1.6	18	1.2	10	0.5	36	5.2	20	2.5	4	1.2	1
Service workers and Shop and Market Sales Workers	113	2.1	9	0.6	48	2.3	26	3.7	20	2.5	5	1.4	5
Skilled Agricultural and Fishery workers	73	1.3	33	2.2	20	1.0	8	1.2	2	0.3	8	2.3	2
Craft and related workers	75	1.4	12	0.8	26	1.3	11	1.6	18	2.3	6	1.7	2
Plant and Machine Operators and Assemblers	525	9.5	445	29.6	16	0.8	14	2.0	14	1.8	31	8.9	5
Elementary Occupations	5	0.1	1	0.1	1	0.0	1	0.1	2	0.3	-	-	-
Armed Forces	21	0.4	1	0.1	12	0.6	1	0.1	2	0.3	5	1.4	-
Workers not classifiable by occupation or occupation not stated	1545	28.1	376	25.0	316	15.4	266	38.3	421	52.6	115	33.1	51

Source: Office of Planning and Statistics

Table 10.1 QUARTERLY CONSUMER PRICE INDEX, MAJURO, 1983-1997 (1982=100).

Year/Quarter	All Groups	Annual	Household/				Durables/
		Average	Food	Personal	Apparel	Fuel	
		B A S E	W E I G H T				
	100.0		57.71	14.76	11.95	15.58	
1983 First quarter	100.65		102.88	97.87	98.34	96.75	
Second quarter	103.39	102.77	105.85	99.61	97.04	102.72	
Third quarter	102.91		103.93	101.64	99.02	103.35	
Fourth quarter	104.14		105.19	108.04	94.90	103.63	
1984 First quarter	108.65		111.07	99.74	105.21	110.79	
Second quarter	109.62	108.21	109.96	109.05	104.45	112.85	
Third quarter	106.59		107.77	102.15	102.76	109.36	
Fourth quarter	107.98		104.04	114.93	108.89	115.33	
1985 First quarter	109.46		106.80	109.77	115.46	114.42	
Second quarter	108.79	107.97	104.32	112.97	104.58	123.88	
Third quarter	106.20		104.64	102.56	104.67	116.56	
Fourth quarter	107.42		106.71	101.16	107.01	116.30	
1986 First quarter	107.99		105.65	111.68	102.06	117.68	
Second quarter	109.66	112.52	106.97	110.16	107.97	120.44	
Third quarter	115.90		113.58	113.89	120.79	122.37	
Fourth quarter	116.51		105.61	121.97	128.20	142.72	
1987 First quarter	111.91		102.84	121.91	123.85	109.06	
Second quarter	110.70	111.85	105.20	117.87	126.13	112.43	
Third quarter	111.94		105.20	117.10	138.21	111.86	
Fourth quarter	112.86		106.10	136.11	127.11	106.88	
1988 First quarter	115.50		109.41	132.52	130.22	110.67	
Second quarter	112.11	114.71	106.98	122.73	124.94	111.22	
Third quarter	114.14		109.46	124.06	128.55	111.05	
Fourth quarter	117.07		113.08	120.83	134.25	115.09	
1989 First quarter	114.11		113.13	125.37	110.61	109.76	
Second quarter	115.59	117.15	111.01	130.91	127.76	108.70	
Third quarter	119.04		116.78	126.21	123.25	117.37	
Fourth quarter	119.87		117.76	132.25	120.25	115.67	
1990 First quarter	114.80		113.90	124.60	116.60	114.80	
Second quarter	118.40	117.98	119.20	131.50	113.40	106.90	
Third quarter	118.10		119.90	132.50	107.90	105.80	
Fourth quarter	120.60		121.00	128.50	124.10	109.00	
1991 First quarter	121.00		120.70	122.90	135.50	109.20	
Second quarter	120.70	122.65	119.50	129.20	126.70	112.50	
Third quarter	124.20		125.30	138.40	113.80	114.50	
Fourth quarter	124.70		125.00	132.00	126.50	115.30	
1992 First quarter	130.20		128.80	147.40	130.10	119.40	
Second quarter	133.09	135.32	129.02	158.91	131.71	124.77	
Third quarter	137.07		134.25	170.67	125.71	124.41	
Fourth quarter	140.92		136.21	172.51	144.79	125.48	
1993 First quarter	140.20		136.30	155.80	155.60	128.30	
Second quarter	142.10	142.03	136.10	157.70	155.30	139.40	
Third quarter	141.73		133.68	165.72	149.98	142.48	
Fourth quarter	144.08		135.82	169.24	153.12	143.90	
1994 First quarter	145.49		136.97	165.08	155.00	151.21	
Second quarter	149.84	150.10	137.84	191.07	159.43	147.92	
Third quarter	152.95		138.22	207.88	161.45	148.95	
Fourth quarter	152.13		136.89	200.71	156.66	159.08	
1995 First quarter	154.33		136.29	212.79	162.64	159.41	
Second quarter	160.87	162.54	138.21	217.97	189.40	168.83	
Third quarter	165.59		145.12	216.97	191.12	173.14	
Fourth quarter	169.37		146.84	237.30	188.70	173.66	
1996 First quarter	171.35		149.88	243.43	189.10	172.83	
Second quarter	178.65	178.12	161.43	246.11	189.58	174.04	
Third quarter	180.01		164.10	250.83	190.41	174.15	
Fourth quarter	182.45		165.51	252.00	194.22	174.18	
1997 First quarter	184.31		166.23	253.03	194.78	178.17	
Second quarter	185.31	186.75	166.66	256.18	195.25	179.62	
Third quarter	187.73		170.49	257.10	195.71	179.75	
Fourth quarter	189.63		171.20	266.55	196.50	179.99	
1998 First quarter	190.63		171.42	272.90	194.93	180.63	
Second quarter	191.62	189.68	171.57	274.01	200.68	191.62	
Third quarter	186.52		172.47	274.22	187.24	186.52	
Fourth quarter	189.96		175.26	275.25	201.35	189.96	

Source: Office of Planning and Statistics

Table 10.2 Revenues, Expenditures, and Changes in Fund Balances by all Governmental Fund Types and Expandable Trust Funds, 1995-1997.

	1995						1996						1997					
	Governmental Fund Types			Fiduciary Fund Type			Governmental Fund Types			Fiduciary Fund Type			Governmental Fund Types			Fiduciary Fund Type		
	General	Special Revenue	Debt Service	Capital Projects	Expandable Trust		General	Special Revenue	Debt Service	Capital Projects	Expandable Trust		General	Special Revenue	Debt Service	Capital Projects	Expandable Trust	
Revenues:																		
Compact funding	7,256,900	6,629,000	-	22,220,840	8,113,660	329,960	1,847,207	6,629,000	-	27,603,240	8,150,200	832,188	1,786,918	6,629,000	-	22,848,690	8,290,000	
Taxes	19,882,938	-	-	-	-	19,810,963	309,735	-	-	-	-	402,912	402,912	-	-	-	-	
Interest and investment	5,598,015	-	514,460	40,527	13,650,551	912,817	2,929,211	-	-	-	20,542,782	601,170	4,192,427	-	-	-	-	
Premiums and contributions	-	-	-	-	9,742,678	-	18,154,372	-	163,695	-	-	-	14,457,806	-	142,134	-	-	-
Federal grants	-	5,288,469	-	1,123,697	-	-	1,159,632	7,138,571	-	368,043	-	-	1,515,149	-	-	-	-	-
Fishing rights	2,150,271	-	-	-	-	1,610,260	-	-	-	-	-	1,916,726	-	10,423,435	-	171,186	-	
Fees and charges	653,269	1,305,838	-	-	-	1,275,713	1,482,207	1,482,207	-	-	-	1,292,255	559,739	-	-	-	-	
Sales	2,542,291	197,868	-	-	-	5,699,239	5,082,338	-	-	-	-	2,653,397	995,060	-	-	-	-	
Other	149,380	893,090	-	1,364,378	1,102,281	14,159	268,907	-	104,867	813,881	26,323,289	3,923	249,125	142,134	23,772,738	756,071		
Total Revenue	38,233,064	14,314,265	514,460	24,749,442	32,609,170	29,653,111	20,601,023	163,695	28,076,150	29,506,863	#####	26,323,289	#####	142,134	23,772,738	28,297,715		
Expenditures:																		
President and cabinet	1,815,566	-	-	-	-	1,847,207	-	-	-	-	-	1,786,918	151,233	-	-	-	-	
Council of Ifoji	366,861	-	-	-	-	309,735	-	-	-	-	-	402,912	-	-	-	-	-	
Special appropriations	3,282,286	-	-	-	-	2,929,211	-	-	-	-	-	4,192,427	-	-	-	-	-	
Ministries and offices	20,308,464	12,427,388	-	-	-	18,154,372	15,644,702	-	-	-	-	14,457,806	-	-	-	-	-	
Nitilela	1,362,673	-	-	-	-	1,159,632	-	-	-	-	-	1,515,149	-	-	-	-	-	
Commissions and authorities	947,359	278,572	-	-	-	811,408	263,820	-	-	-	-	789,150	596,507	-	-	-	-	
Judiciary	-	556,421	-	-	-	-	473,385	-	-	-	-	-	-	17,942,423	-	-	-	
Principal retirement	-	-	16,232,588	-	-	-	16,459,870	-	-	-	-	-	-	6,723,386	-	-	-	
Interest	-	-	7,542,547	-	-	-	7,521,665	-	-	-	-	-	-	-	-	-	-	
Premium Redemption	-	-	-	-	-	-	-	-	-	-	-	-	-	-	-	-	-	
Bond Issue costs	-	-	-	-	-	-	-	-	-	-	-	-	-	-	-	-	-	
Capital projects	-	-	-	41,119,948	-	-	-	-	-	6,463,617	-	-	-	-	-	5,283,278	-	
Land use distributions	-	-	-	-	-	-	-	-	-	-	-	-	-	-	-	-	-	
Local government distributions	-	-	-	-	-	-	-	-	-	-	-	-	-	-	-	-	-	
Health care payments	-	-	-	-	-	-	-	-	-	-	-	-	-	-	-	-	-	
Nuclear claims payments	-	-	-	-	-	-	-	-	-	-	-	-	-	-	-	-	-	
Social security benefit payments	-	-	-	-	-	-	-	-	-	-	-	-	-	-	-	-	-	
Other	1,037,022	1,378,526	29,124	-	-	356,401	992,202	107,501	-	-	131,140	2,337,692	-	494,170	-	-	-	
Total expenditures	29,140,231	14,640,907	23,804,259	41,119,948	44,066,115	25,568,166	17,374,109	24,089,036	6,463,617	29,158,606	25,482,054	747,740	25,159,979	5,293,278	26,303,435	-		
Other financing source (uses):																		
Bond proceeds	-	-	-	-	-	-	-	-	-	-	-	-	-	-	-	-	-	
Loan proceeds	-	-	-	4,052,339	-	-	-	-	-	4,108,222	-	-	-	-	-	10,681,881	-	
Operating transfers in	1,321,206	2,675,126	25,006,720	24,463,333	11,759,833	1,280,939	1,174,345	28,190,765	30,161,357	9,674,805	2,000,000	1,489,285	24,665,809	24,618,283	8,517,805	-		
Operating transfers out	(7,899,915)	(2,298,500)	(221,206)	(50,953,209)	(11,210,000)	(4,673,067)	(3,100,000)	(1,124,677)	(55,117,445)	(9,300,000)	(3,493,940)	(3,916,005)	(140,401)	(51,866,178)	(6,680,500)	-		
Total other financing sources (uses), net	(6,578,709)	376,626	24,785,514	(22,437,537)	549,833	(3,392,128)	(1,925,655)	27,066,088	(20,847,866)	374,805	-1,493,940	-2,426,720	24,525,408	-16,566,014	-162,895	-		
Fund balances at beginning of year	4,861,399	2,428,730	1,300,904	55,645,175	129,087,575	7,375,523	5,328,933	2,796,619	20,114,373	94,422,502	8,205,085	6,493,447	5,939,366	20,879,040	93,165,407	-		
Fund balances at end of year	7,375,523	2,478,714	2,796,619	17,055,134	118,180,463	8,205,085	6,493,447	5,937,366	20,879,040	93,165,407	7,916,310	6,237,129	5,444,929	22,792,486	92,981,617	-		

Source: Extracted from The Republic of the Marshall Islands, General Purpose Financial Statements and Information for the year ended September 30, 1994-1996, Audit Reports by Deloitte Touche Tohmatsu International

Table 10.3 General fund and Special Funds Revenues of the National Government Fiscal year ended September 30, 1994-1997.

Revenues	1994		1995		1996		1997	
	General Fund	Special Revenue Fund	General Fund	Special Revenue Fund	General Fund	Special Revenue Fund	General Fund	Special Revenue Fund
Compact Funding	7,227,000	6,629,000	7,256,900	6,629,000	329,960	6,629,000	932,188	6,629,000
Federal grants	-	4,643,197		5,288,469		7,138,571		10,423,435
Income tax	7,983,919		9,275,524		8,519,249		8,101,955	
Import duties	6,572,193		6,277,365		5,664,552		7,031,547	
Gross revenue tax	3,177,262		3,104,224		3,876,470		2,725,094	
Fuel tax	638,022		862,452		1,316,986		778,935	
Penalties and interest	81,580		92,723		145,929		30,950	
Fees and charges	4,061	1,491,442	653,269	1,305,838	1,275,713	1,482,207	12,952,255	559,739
Fishing Rights	3,100,682		2,150,271		1,610,260		1,916,726	
Interest and dividends	1,087,175		5,598,015		912,817		601,170	
Coin sales	276,849		196,791		161,854		402,224	
Philatelic sales	128,099		155,475		-		507,548	
Passport sales	913,261		2,188,725		5,117,065		1,615,000	
Other sales	3,075	212,417	1,300	197,868	420,320	5,082,338	128,625	995,060
Other	1,001,098	953,823	420,030	893,090	301,936	268,907		249,125
Total	32,194,276	13,929,879	38,233,064	14,314,265	29,653,111	20,601,023	37,724,217	18,856,359

Source : Extracted from The Republic of the Marshall Islands, General Purpose Financial Statements and Information for the year ended September 30, 1994-1996, Audit Reports by Deloitte Touche Tohmatsu International

Table 10.4 General fund and special Revenue Funds Expenditures of the National government Fiscal year ended September 30, 1994-1997.

	1994		1995		1996		1997	
	General Fund	Special Revenue Fund	General Fund	Special Revenue Fund	General Fund	Special Revenue Fund	General Fund	Special Revenue Fund
President and Cabinet	1,742,469		1,914,900		1,874,274		1,786,918	151,233
Council of Iroij	359,730		365,406		314,252		402,912	
Special Appropriations	3,582,521		3,247,696		3,041,057		4,192,427	
Chief Secretary office	356,355	722,755	338,866	421,841	353,215	340,163	294,701	148,734
Public Defender's office	190,545	11,627	203,030	-	149,269		19,909	
Office of Auditor General	248,573		248,995		150,660	392,085	130,577	511,894
Ministry of Health & Environment	2,930,846	1,963,216	3,214,335	3,837,766	3,087,234	3,119,229	2,887,675	3,894,679
Ministry Education	-	9,770,336	6,465,398	3,800,767	5,931,811	5,128,059	4,431,188	7,755,841
Ministry of Transportation & Communication	80,871	1,833,943	117,374	1,922,276	33,563	1,445,296	1,818	1,190,693
Ministry of Resources & Development	983,885	17,922	874,812	10,347	837,617	59,768	1,366,072	262,991
Ministry of Interior & Outer Island Affairs	1,390,244	76,978	1,119,487	12,800	833,167	148,061	805,094	178,889
Ministry of Justice	1,295,541	21,940	1,350,821	1,118	1,324,822	74,501	1,232,240	76,980
Ministry of Finance	1,160,402	404,867	1,281,417	41,051	1,519,586	251,800	1,480,471	468,191
Ministry of Foreign Affairs	3,326,203	77,115	3,124,299	62,306	2,390,038	2,679,770	1,793,733	373,416
Ministry of Public Works	1,253,978	859,517	1,231,465	571,104	860,075	556,436	10,286	945,296
Ministry of Social Services	1,388,986	1,600,753	1,235,308	1,548,578	621,145	1,449,534	4,042	50,267
Nitijela	1,286,010		1,373,675		1,154,544		1,151,149	-
Commissions and Authorities	880,687	2,867,710	935,391	2,410,953	753,773	1,729,407	789,150	-
Other	598,092		967,113		438,323		2,337,692	-
Total Expenditure	23,043,938	20,228,679	29,609,788	14,640,907	25,668,425	17,374,109	25,118,054	16,009,104
Excess of Revenues over expenditures	9,150,338	(6,298,800)	8,623,276	(326,642)	3,984,686	3,226,914	1,205,162	2,230,402
Loan proceeds	-	682,759	-	-	-	-	-	-
Transfers in	210,459	9,308,063	1,321,206	2,675,126	1,280,939	1,174,345	2,000,000	1,489,285
Transfer out	11,808,710	(3,570,226)	7,899,915	(2,298,500)	4,723,067	(3,100,000)	(3,493,940)	(3,916,005)
Total transfer net	(11,598,251)	6,420,596	(6,578,709)	376,626	(3,442,128)	(1,925,655)	(1,493,940)	(2,426,720)
Excess (deficiency) of revenues and transfers over expenditures and transfers out	(2,447,913)	121,796	2,044,567	49,984	542,558	1,301,259	(288,775)	(196,318)
Reserved for related assets	(640,618)		(485,869)	-	(4,424,056)	(136,745)	(3,861,802)	-
Fund balance unreserved at the beginning of year	3,324,570	1,780,302	1,429,550	2,428,730	2,988,248	5,328,933	(893,250)	6,493,447
Fund balance unreserved at the end of year	236,039	1,902,098	2,988,248	2,478,714	(893,250)	6,493,447	(5,043,827)	6,297,129

Source : Extracted from The Republic of the Marshall Islands, General Purpose Financial Statements and Information for the year ended September 30, 1994-1996, Audit Reports by Deloitte Touche Tohmatsu International

Table 11.1 GROSS DOMESTIC PRODUCT, (NOMINAL) 1981 - 1990.
(Fiscal year ending September 30; thousand U.S dollars)

Items	Year									
	1981	1982	1983	1984	1985	1986	1987	1988	1989	1990
1. Net Domestic Product	23,262	26,233	31,093	33,418	33,100	41,939	48,883	55,295	57,555	60,573
1.1 Total Compensation of Employees:	12,054	15,455	16,641	17,425	19,003	24,113	30,249	36,139	37,469	39,947
Government:	8,750	10,174	10,822	11,495	11,810	13,657	15,570	17,768	19,205	23,944
Free Housing Provided	8,110	9,298	9,791	10,353	10,923	12,617	14,219	16,149	17,527	18,904
Enterprise - Government	360	430	500	575	580	593	611	665	510	633
Private:	280	446	531	567	308	447	740	954	1,168	4,407
Private	3,304	5,281	5,819	5,930	7,193	10,456	14,679	18,371	18,264	16,003
Other	2,924	4,803	5,292	5,392	6,559	9,589	13,582	17,036	17,027	14,544
Free Housing Provided	73	120	132	135	164	239	339	425	386	489
Social Security Contribution	100	104	110	113	134	172	235	253	234	289
Domestic Services	107	150	161	165	194	259	350	437	420	411
Non - Profit Institution (Museum)	100	104	124	126	127	162	133	134	120	165
N.A.	N.A.	N.A.	N.A.	N.A.	15	34	40	86	77	105
1.2 Total Operating Surplus	11,208	10,778	14,452	15,993	14,098	17,827	18,634	19,156	20,086	20,626
Government Enterprises	218	-829	383	939	-1519	-327	842	197	(449)	(3,584)
Private Enterprises - Taxed	4,033	4,481	5,975	6,266	6,721	8,935	7,767	8,349	9,247	11,443
Enterprises not covered by Tax	97	112	149	157	167	222	192	207	229	283
Copra marketed	1,090	787	1,141	1,365	1,031	847	1,080	1,213	1,209	1,079
Other agricultural Products Marketed	630	680	743	793	841	890	956	1,004	1,076	1,246
Non Market Production	4,210	4,543	4,964	5,302	5,617	5,950	6,387	6,706	7,188	8,323
Rental - Rented Buildings	240	259	283	303	320	338	364	382	409	473
Imputed rental-owner occupied houses	690	745	814	869	920	973	1,046	1,098	1,177	1,363
2. Consumption of Fixed Capital	1,150	1,571	1,730	1,805	1,933	2,445	2,902	3,075	2,896	3,189
3. Indirect Taxes	3,257	3,430	4,477	5,109	5,158	7,510	5,545	5,505	6,273	7,804
4. Subsidies	517	670	757	819	1,785	2,887	2,200	2,001	3,003	2,875
5. Gross Domestic Product	27,152	30,564	36,543	39,513	38,406	49,007	55,130	61,874	63,721	68,691

Note : (a) These figures are nominal values and hence not corrected for inflation. The figures are also provisional as they are subject to revision when better data becomes available.

(b) This table differs from previous tables because the earnings of Marshallese workers in the Kwajalein Missile Base, legally a foreign entity, are considered as factor incomes from abroad and will be included in the estimates of Gross National Product.

Sources: - S.G. Tiwari: Report on Development of National Accounts and Related Matters in the Republic of Marshall Islands (TTP), ESCAP
- K.N.C. Pillai: Report on National Accounts Mission to the Republic of the Marshall Islands, ESCAP, Bangkok, Thailand
- J. Kumar: Regional Adviser on National Accounts, ESCAP, Bangkok, Thailand. (Unpublished Report)
- Office of Planning and Statistics

Table 11.2 GROSS DOMESTIC PRODUCT OF THE REPUBLIC OF THE MARSHALL ISLANDS, 1981-1990
(Fiscal Year ending September 30; US Dollars in Millions)

Item	YEAR									
	1981	1982	1983	1984	1985	1986	1987	1988	1989	1990
1 Net Domestic Product at Factor Cost	23.26	26.24	31.09	33.42	33.10	41.94	48.88	55.30	57.56	60.58
Compensation of Employees	12.05	15.46	16.64	17.43	19.00	24.11	30.25	36.14	37.47	39.95
Operating Surplus	11.21	10.78	14.45	15.99	14.10	17.83	18.63	19.16	20.09	20.63
2 Consumption of fixed Capital	1.15	1.57	1.73	1.81	1.93	2.45	2.90	3.08	2.90	3.19
3 Gross Domestic Product at Factor Cost	24.41	27.81	32.82	35.23	35.03	44.39	51.78	58.38	60.46	63.77
4 Indirect Taxes less Subsidies	2.74	2.76	3.72	4.29	3.37	4.62	3.35	3.50	3.27	4.93
5 Gross Domestic Product at Market Prices.	27.15	30.57	36.54	39.52	38.40	49.01	55.13	61.88	63.73	68.70
6 Mid-year Population estimate	31,927	33,036	34,199	35,420	36,702	38,044	39,449	42,692	44,407	46,188
7 Per Capita GDP at Market Prices	850	925	1,068	1,116	1,046	1,288	1,397	1,450	1,435	1,487
8 Percentage increase over previous year										
GDP at market prices	-	12.6	19.5	8.2	-2.8	27.6	12.5	12.3	3.0	7.8
Per Capita GDP at market prices	-	8.8	15.5	4.4	-6.2	23.1	8.5	3.7	-1.0	3.6

Table 11.3 ESTIMATES OF GROSS DOMESTIC PRODUCT, 1991- 1997.
(At current prices: Thousand U.S dollars)

Sector	1991		1992		1993		1994		1995		1996		1997	
	GDP	Percent	GDP	Percent	GDP	Percent	GDP	Percent	GDP	Percent	GDP	Percent	GDP	Percent
1. Agriculture, Forestry and Fishing	#####	13.9	#####	13.5	11,476.3	13.2	#####	15.9	15,673.8	14.9	13,589.4	14.0	#####	14.1
i. Agriculture			#####	3.0	2,469.3	2.8	2,651.2	2.8	3,382.7	3.2	2,016.2	2.1	1,915.4	2.1
(a) Copra	789.2	1.1	#####	1.8	1,761.9	2.0	1,850.0	2.0	1,916.6	1.8	1,985.6	2.0	2,010.0	2.2
(b) Food Crops	1,710.6	2.4	#####	1.9	1,550.4	1.8	1,627.9	1.7	1,767.3	1.7	1,942.1	2.0	2,136.3	2.3
ii. Livestock	121.2	0.2	#####	0.2	148.4	0.2	155.8	0.2	163.6	0.2	171.8	0.2	175.2	0.2
iii. Agricultural Services	5,972.3	8.3	#####	6.6	5,546.3	6.4	8,783.4	9.3	8,443.6	8.0	7,473.7	7.7	6,726.3	7.3
iv. Fishing														
2. Mining and quarrying	192.6	0.3	215.2	0.3	240.4	0.3	248.0	0.3	285.2	0.3	310.8	0.3	322.2	0.3
3. Manufacturing	853.0	1.2	789.6	1.0	595.4	0.7	1,067.2	1.1	2,690.0	2.6	1,488.0	1.5	1,561.0	1.7
(a) Processed Copra Products	(494.3)	(0.7)	(638.6)	(0.8)	(921.1)	(1.1)	(497.0)	(0.5)	89.4	0.1	(128.0)	-0.1	(55)	0.0
(b) Other Manufactured Goods	946.4	1.3	#####	1.4	1,139.2	1.3	1,175.1	1.2	2,192.6	2.1	1,193.0	1.2	1,193.0	1.3
(c) Handicrafts	400.9	0.6	343.0	0.4	377.3	0.4	389.1	0.4	408.0	0.4	423.0	0.4	423.0	0.5
4. Electricity, Gas and Water	(602.6)	(0.8)	(528.2)	(0.7)	863.8	1.0	1,694.3	1.8	2,143.3	2.0	2,566.0	2.6	2,808.0	3.0
i. Electricity	(548.0)	(0.8)	(440.2)	(0.6)	1,222.5	1.4	1,610.5	1.7	1,945.1	1.8	2,380.0	2.5	2,618.0	2.8
ii. Water	(54.6)	(0.1)	(88.0)	(0.1)	(358.7)	(0.4)	83.8	0.1	198.2	0.2	186.0	0.2	190.0	0.2
5. Construction	8,850.6	12.3	#####	12.5	8,450.0	9.7	9,295.0	9.8	10,694.8	10.2	6,625.8	6.8	6,294.5	6.8
6. Wholesale and Retail Trade and Restaurants and Hotels	#####	24.8	#####	24.9	16,216.8	18.6	#####	18.2	17,918.5	17.0	17,743.0	18.3	#####	17.6
i. Wholesale and retail Trade	#####	20.3	#####	20.1	12,175.5	14.0	#####	13.6	13,618.0	12.9	12,969.0	13.4	#####	12.7
ii. Restaurants and Hotels	3,181.6	4.4	#####	4.8	4,041.3	4.6	4,283.8	4.5	4,300.5	4.1	4,774.0	4.9	4,535.3	4.9
7. Transport, Storage and Communications	#####	(5.1)	#####	(3.5)	2,771.1	3.2	1,904.2	2.0	6,537.5	6.2	6,895.8	7.1	7,183.0	7.8
i. Land Transport	1,060.6	1.5	#####	1.8	1,606.2	1.8	1,702.6	1.8	1,711.6	1.6	1,589.9	1.6	1,510.4	1.6
ii. Water Transport	157.6	0.2	388.6	0.5	634.9	0.7	673.0	0.7	758.5	0.7	692.9	0.7	658.3	0.7
iii. Air Transport	#####	(9.2)	#####	(8.6)	(1,372.2)	(1.6)	#####	(3.0)	596.0	0.6	600.4	0.6	600.4	0.7
iv. Communications	1,779.0	2.5	#####	2.8	1,902.2	2.2	2,355.1	2.5	3,471.4	3.3	4,012.6	4.1	4,413.9	4.8
8. Finance, Insurance, Real Estate and Business Services	#####	15.8	#####	16.0	14,175.4	16.3	#####	16.8	17,089.3	16.2	14,958.6	15.4	#####	15.5
i. Financial Institutions	3,413.8	4.7	#####	4.2	4,072.3	4.7	4,790.8	5.1	5,281.6	5.0	3,893.0	4.0	3,503.7	3.8
ii. Insurance	381.3	0.5	442.6	0.6	521.5	0.6	552.8	0.6	680.2	0.6	170.9	0.2	170.9	0.2
iii. Real Estate	1,891.8	2.6	#####	3.1	2,771.6	3.2	2,875.2	3.0	3,113.2	3.0	2,869.7	3.0	2,726.2	3.0
iv. Owner-occupied dwellings	4,542.9	6.3	#####	6.5	5,656.2	6.5	6,150.0	6.5	6,350.3	6.0	7,226.0	7.4	6,864.7	7.4
v. Business Services	1,149.3	1.6	#####	1.6	1,153.8	1.3	1,497.6	1.6	1,664.0	1.6	799.0	0.8	1,000.0	1.1
9. Community, Social and Personal Services	#####	34.6	#####	33.9	29,456.2	33.8	#####	33.5	32,072.2	30.5	30,782.0	31.7	#####	31.3
i. Public Administration and Defense	#####	15.0	#####	14.8	12,527.6	14.4	#####	14.1	13,472.0	12.8	13,000.0	13.4	#####	12.0
ii. Public Utility Services	693.7	1.0	734.3	0.9	1,040.7	1.2	955.0	1.0	763.6	0.7	947.5	1.0	947.5	1.0
iii. Education Services	6,956.3	9.6	#####	9.2	8,363.4	9.6	9,496.2	10.0	9,681.4	9.2	9,141.8	9.4	9,141.8	9.9
iv. Health Services	3,881.3	5.4	#####	5.3	4,307.5	4.9	4,418.4	4.7	4,546.6	4.3	4,646.7	4.8	4,646.7	5.0
v. Other Social and related Community Services	1,160.9	1.6	#####	1.5	1,377.8	1.6	1,542.8	1.6	1,727.5	1.6	1,187.6	1.2	1,187.6	1.3
vi. Recreation and Cultural Services	791.5	1.1	886.2	1.1	998.2	1.1	1,058.1	1.1	1,008.7	1.0	954.6	1.0	954.6	1.0
vii. Personal and Household Services	699.8	1.0	766.5	1.0	841.0	1.0	891.5	0.9	872.4	0.8	903.8	0.9	903.8	1.0
10. Total	#####	96.8	#####	97.8	84,245.4	96.8	#####	99.4	#####	99.9	94,959.4	97.9	#####	98.1
11. LESS imputed bank service charges	4,148.2	5.7	#####	5.5	5,240.0	6.0	6,604.2	7.0	6,918.1	6.6	4,905.2	5.1	4,905.2	5.3
12. PLUS import duties	6,436.1	8.9	#####	7.6	8,054.0	9.3	7,210.2	7.6	7,052.3	6.7	6,981.5	7.2	6,652.3	7.2
13. Gross Domestic Product	#####	100.0	#####	100.0	87,059.4	100.0	#####	100.0	#####	100.0	97,035.7	100.0	#####	100.0

*Preliminary estimates which are provisional and subject to revision.

Sources: L.N. Perera. Report on RMI Gross Domestic Product and Sector Accounts
South Pacific Forum Secretariat
Office of Planning and Statistics

Table 11.4 ESTIMATES OF REAL GROSS DOMESTIC PRODUCTION, 1982 - 1997.
(At 1991 constant prices)

Particulars	1982	1983	1984	1985	1986	1987	1988	1989	1990	1991	1992	1993	1994	1995	1996	1997
1. GDP at current prices (Thousand US \$)	30564	36543	39513	38406	49007	55130	61874	63721	68691	72219	79709	87059	94596	105239	97036	92184
2. GDP deflator (Majuro Consumer Price Index)	100.00	102.77	108.21	107.97	112.52	111.85	114.71	117.15	117.98	122.65	135.32	142.03	150.1	162.54	178.12	186.75
3. Real GDP (Thousand US \$)	37487	43612	44786	43628	53419	60453	66157	66713	71410	72219	72246	75180	77296	79411	66817	60542
4. Change in Real GDP (Percent)	-	16.34	2.69	-2.59	22.44	13.17	9.43	8.40	7.04	1.13	0.04	4.06	2.81	2.66	-15.85	-9.4
5. Estimated Mid-Year Population	33036	34199	35420	36702	38044	39449	42692	44407	46188	48041	49969	51977	53636	56678	58746	60832
6. Per Capita Real GDP (US \$)	1135	1275	1264	1189	1404	1532	1550	1502	1546	1503	1446	1446	1441	1401	1137	995
7. Change in Per Capita Real GDP (Percent)	-	12.33	0.87	5.94	18.08	9.12	1.17	-3.10	2.93	-2.79	-3.80	0.00	-0.35	-2.77	-18.84	-12.5

* Preliminary estimates which are provisional and subject to revision.

Source: Office of Planning and Statistics

Table 12.1 NUMBER OF PRIVATE MOTOR VEHICLES REGISTERED, BY TYPE, 1982-1997.

Type of Vehicle	1982	###	1984	1986	1987	1988	1989	1990	1991	1992	1993	1994	####	####	####
All	744	592	880	932	1080	1142	975	928	1488	2062	1761	1647	1666	1307	1800
Bus	21	11	45	4	5	10	4	14	4	4	6	6	4	7	4
Jeep	6	9	23	20	24	18	19	22	24	31	42	36	41	28	26
Mini-Pick up	24	33	32	-	-	-	49	36	43	53	39	-	28	12	13
Pick Up	238	164	261	258	309	289	198	24	498	485	581	586	562	369	691
Scooter	31	27	37	10	12	22	18	28	42	.	31	39	30	16	37
Sedan	385	317	447	525	606	676	526	647	806	1196	809	793	743	567	748
Truck	30	19	35	50	54	58	66	82	33	118	70	-	73	48	27
Van	9	12	-	65	70	69	95	75	38	175	183	187	185	126	98
H-equipment	-	-	-	-	-	-	-	-	-	-	-	-	-	70	91
Mini Van	-	-	-	-	-	-	-	-	-	-	-	-	-	30	28
Station Wagon	-	-	-	-	-	-	-	-	-	-	-	-	-	34	37

1985 figures are not available.

Source: Ministry of Justice, Department of Public Safety, Majuro Local Government Police Department

Table 12.2 POWER GENERATED, NUMBER OF ELECTRICITY CONSUMERS AND REVENUE COLLECTED, 1989-199

Month	1989				1990				1991			
	Total MW HRS generated	Cost per KWH (cents)	Number of consumers	Total revenue collected (\$'000)	Total MW HRS generated	Cost per KWH (cents)	Number of consumers	Total revenue collected (\$'000)	Total MW HRS generated	Cost per KWH (cents)	Number of consumers	Total revenue collected (\$'000)
Total	38,911			2,473	42,912			3,068	45,759			3,528
January	3,267	4.44	1,901	151	3,537	4.8	2,072	228	3,644	5.9	2,290	347
February	2,865	4.56	1,926	252	3,179	4.7	2,077	216	3,397	7.9	2,315	190
March	3,154	4.45	1,939	138	4,201	3.8	2,107	234	3,622	7.9	2,337	274
April	3,060	4.64	1,944	156	3,473	4.9	2,119	277	3,673	7.9	2,350	255
May	3,262	4.59	1,967	275	3,571	5.2	2,136	272	3,870	7.8	2,297	293
June	3,151	4.79	1,999	195	3,427	4.6	2,150	216	3,810	8.0	2,347	383
July	3,231	4.69	2,002	184	3,587	4.8	2,146	288	3,991	7.8	2,363	264
August	3,287	4.70	2,023	184	3,596	5.0	2,171	292	4,019	8.2	2,389	327
September	3,271	4.71	2,042	220	3,408	5.5	2,200	246	3,936	6.6	2,407	341
October	3,410	4.67	2,056	209	3,630	5.6	2,217	289	4,037	6.6	2,397	218
November	3,406	4.75	2,061	323	3,577	6.2	2,244	272	3,809	6.6	2,408	277
December	3,547	4.69	2,073	186	3,726	6.4	2,261	238	3,951	6.6	2,400	359

Month	1992				1993				1994			
	Total MW HRS generated	Cost per KWH (cents)	Number of consumers	Total revenue collected (\$'000)	Total MW HRS generated	Cost per KWH (cents)	Number of consumers	Total revenue collected (\$'000)	Total MW HRS generated	Cost per KWH (cents)	Number of consumers	Total revenue collected (\$'000)
Total	48,252			3,991	53,303			4,722	57,891			5,404
January	3,698	5.7	2,423	339	4140.1	5.2	2,589	352	4745.3	5.7	2,866	305
February	3,580	5.5	2,439	326	3751.0	5.6	2,594	319	4152.1	5.0	2,891	423
March	3,905	5.6	2,448	251	4308.7	5.8	2,607	300	4724.5	4.9	2,897	462
April	3,845	5.7	2,468	324	4321.1	5.1	2,630	372	4647.0	5.2	2,923	357
May	4,056	5.6	2,489	261	4581.3	4.9	2,654	290	4808.3	4.4	2,937	321
June	3,998	5.3	2,492	399	4589.9	4.7	2,663	276	4771.1	4.3	2,968	384
July	4,158	5.3	2,511	262	4414.2	5.0	2,721	474	4962.2	4.2	2,974	235
August	4,159	5.2	2,513	312	4683.0	5.1	2,755	444	5030.7	4.1	3,023	371
September	4,136	5.2	2,501	309	4684.4	5.0	2,773	312	4834.7	4.3	3,038	371
October	4,346	5.2	2,524	415	4528.1	5.1	2,749	650	5059.3	4.6	2,484	528
November	4,040	5.3	2,552	333	4541.3	5.3	2,763	643	4977.1	4.3	2,496	1326
December	4,331	5.1	2,565	460	4759.9	5.4	2,793	290	5178.5	4.3	2,502	321

Month	1995				1996				1997			
	Total MW HRS generated	Cost per KWH (cents)	Number of consumers	Total revenue collected (\$'000)	Total MW HRS generated	Cost per KWH (cents)	Number of consumers	Total revenue collected (\$'000)	Total MW HRS generated	Cost per KWH (cents)	Number of consumers	Total revenue collected (\$'000)
Total	61,668			5,651	62,620			6,046	62,116			6,451
January	5307.3	4.6	2,529	588	5249.2	4.6	3253	735	2547	6.21	2742	**
February	4691.8	4.5	2,552	490	4863.5	5.1	3280	509	4982.0	5.73	2749	**
March	5167.2	4.6	2,561	543	5301.8	4.7	3308	422	5626	6.07	2766	**
April	4934.3	4.6	2,558	427	4841.4	4.8	3326	549	5244	5.65	2765	**
May	5278.8	4.5	2,573	457	5202.7	4.5	3332	424	5458.2	6.38	2785	**
June	4941.4	4.4	2,602	431	4967.6	4.4	3358	486	5286	5.97	2780	**
July	5275.1	4.6	2,608	442	5368.6	5.4	3377	461	5708	5.93	2777	**
August	5443.3	4.3	2,625	518	5151.9	5.5	3400	390	5639	6.14	2786	**
September	5060.9	5.1	2,624	294	5280.9	5.2	3408	671	5402	5.54	2794	**
October	5261.3	4.1	3,198	878	5572.4	5.8	3434	517	5563.0	5.81	2795	**
November	5040.2	4.2	3,215	358	5272.4	5.6	3471	425	5322	5.48	2845	**
December	5266.3	4.5	3,227	225	5547.1	5.5	3485	457	5339	5.12	2838	**

** Total Revenues collected by month was not available.
Source: Marsnais Energy Company

Table 12.3 ELECTRICITY CHARGES AT MAJURO

Year	Price Per KWH		
	Household	Business	Government
1987	\$0.08	\$0.10	\$0.10
1988	\$0.08	\$0.10	\$0.10
1989	\$0.08	\$0.10	\$0.10
1990	\$0.09	\$0.11	\$0.11
1991	\$0.10	\$0.12	\$0.12
1992	\$0.10	\$0.12	\$0.14
1993	\$0.11	\$0.13	\$0.15
1994	\$0.11	\$0.13	\$0.15
1995	\$0.11	\$0.13	\$0.15
1996	\$0.11	\$0.15	\$0.15
1997	\$0.11	\$0.16	\$0.13

Source: Marshalls Energy Company

Table 12.3 ELECTRICITY CHARGES AT MAJURO

Year	Price Per KWH		
	Household	Business	Government
1987	\$ 0.08	\$0.10	\$ 0.10
1988	\$ 0.08	\$0.10	\$ 0.10
1989	\$ 0.08	\$0.10	\$ 0.10
1990	\$ 0.09	\$0.11	\$ 0.11
1991	\$ 0.10	\$0.12	\$ 0.12
1992	\$ 0.10	\$0.12	\$ 0.14
1993	\$ 0.11	\$0.13	\$ 0.15
1994	\$ 0.11	\$0.13	\$ 0.15
1995	\$ 0.11	\$0.13	\$ 0.15
1996	\$ 0.11	\$0.15	\$ 0.15
1997	\$ 0.11	\$0.16	\$ 0.13

Source : Marshall Energy Company.

Table 12.4 TYPES AND NUMBERS OF CONSUMERS OF ELECTRICITY IN MAJURO BY MONTH, 1993-1997.

MONTH	1993										1994										1995									
	C	C1	G	F	I	R	L	E	TOTAL	C	C1	G	F	I	R	L	E	TOTAL	C	C1	G	F	I	R	L	E	TOTAL			
January	238	4	96	39	3	1,823	70	2,273	152	-	79	6	15	769	1,373	18	2,412	178	-	86	-	5	882	1368	16	2535				
February	240	3	95	40	8	1,823	68	2,277	147	-	75	4	3	690	1,479	19	2,417	179	-	89	-	22	860	1391	10	2551				
March	236	3	98	39	8	1,835	69	2,288	144	-	73	4	15	650	1,579	17	2,482	180	-	88	-	24	882	1378	11	2563				
April	239	4	100	39	4	1,843	72	2,301	142	-	71	3	16	629	1,559	16	2,436	184	-	86	2	11	902	1364	9	2558				
May	236	1	107	29	6	1,859	72	2,310	149	-	65	3	3	590	1,609	16	2,435	186	-	86	2	12	922	1353	12	2573				
June	243	1	105	22	18	1,890	44	2,323	146	-	63	3	8	564	1,664	16	2,464	177	-	83	2	12	925	1390	13	2602				
July	248	1	106	9	8	1,929	38	2,339	143	-	65	3	5	531	1,702	16	2,465	178	-	83	-	6	909	1417	15	2608				
August	248	1	104	12	9	1,935	42	2,351	155	-	89	3	27	907	1,295	16	2,492	176	-	85	-	10	936	1400	18	2625				
September	248	1	104	10	15	1,939	42	2,359	165	-	86	3	16	859	1,316	17	2,462	174	-	87	1	23	933	1386	20	2624				
October	248	1	105	10	9	1,944	36	2,353	168	-	82	3	10	874	1,330	17	2,484	174	-	82	-	16	910	1415	23	2620				
November	250	0	107	10	3	1,958	31	2,359	168	-	85	3	11	866	1,347	16	2,496	176	-	79	-	8	911	1425	22	2621				
December	167	0	81	5	2	1,034	1,079	24	2,392	178	-	84	3	2	904	1,315	16	2,502	173	-	77	-	10	907	1441	22	2630			

MONTH	1996										1997																			
	C	C1	G	F	I	R	L	E	TOTAL	C	C1	G	F	I	R	L	E	TOTAL												
January	175	0	77	0	7	898	1465	21	2643	190	79	8	967	1,479	19	2,742	190	79	8	967	1,479	19	2,742	190	79	8	967	1,479	19	2,742
February	175	0	77	0	18	860	1516	20	2666	182	80	3	846	1,622	19	2,752	182	80	3	846	1,622	19	2,752	182	80	3	846	1,622	19	2,752
March	183	0	78	0	21	919	1450	20	2671	188	80	10	961	1,507	20	2,766	188	80	10	961	1,507	20	2,766	188	80	10	961	1,507	20	2,766
April	182	0	81	1	8	927	1445	23	2667	194	80	11	945	1,516	19	2,765	194	80	11	945	1,516	19	2,765	194	80	11	945	1,516	19	2,765
May	180	0	80	0	10	901	1462	27	2660	189	74	13	931	1,556	22	2,785	189	74	13	931	1,556	22	2,785	189	74	13	931	1,556	22	2,785
June	180	0	75	0	17	874	1509	26	2681	191	77	14	937	1,539	22	2,780	191	77	14	937	1,539	22	2,780	191	77	14	937	1,539	22	2,780
July	187	0	77	0	6	925	1464	22	2681	191	80	14	968	1,498	26	2,777	191	80	14	968	1,498	26	2,777	191	80	14	968	1,498	26	2,777
August	185	0	78	0	25	962	1425	21	2696	200	82	6	959	1,509	30	2,786	200	82	6	959	1,509	30	2,786	200	82	6	959	1,509	30	2,786
September	191	0	81	0	8	921	1464	21	2686	194	79	9	963	1,517	32	2,794	194	79	9	963	1,517	32	2,794	194	79	9	963	1,517	32	2,794
October	188	0	83	0	3	950	1448	23	2695	195	81	15	965	1,502	37	2,795	195	81	15	965	1,502	37	2,795	195	81	15	965	1,502	37	2,795
November	190	0	80	0	2	962	1468	19	2721	203	84	12	913	1,601	27	2,840	203	84	12	913	1,601	27	2,840	203	84	12	913	1,601	27	2,840
December	193	0	80	0	6	955	1481	19	2734	203	87	9	905	1,604	30	2,838	203	87	9	905	1,604	30	2,838	203	87	9	905	1,604	30	2,838

LEGEND - 1993&1994

C = commercial @ 12 cents per KWH
 C1 = commercial flat rate @ \$100 per month
 G = Government @ 12 cents per KWH
 F = residential flat rate @ \$15 per month
 I = current inactive for the month
 R = residential metered @ 10 cents per KWH
 E = Estimated, where a meter appears to Malfunction or we cannot get access customers are charged the average of their 3 months readings

LEGEND - 1996 & 1997

C = Commercial @ 16 cents per KWH
 C1 = Commercial @ \$ 100.00 per month
 G = Government @ 13 cents per KWH
 F = Residential flat rate @ \$15.00 per month
 I = Current inactive for the month
 R = Residential metered @ 12 cents per KWH
 L = Lifeline for customers using less than 500kwh per month @ 11 cents
 E = Estimated, where a meter appears to malfunction or we cannot get access customers are charged the average of the past 3 month reading

Source: Marshall Energy Company

LEGEND - 1994 & 1995

C = commercial @ 15 cents per KWH
 C1 = commercial flat rate @ \$100 per month
 G = Government @ 13 cents per KWH
 F = residential flat rate @ \$15 per month
 I = current inactive for the month
 R = residential metered @ 11 cents per KWH
 L = lifeline for customers using less than 500KW per month @ 10 cents
 E = Estimated, where a meter appears to Malfunction or we cannot get access customers are charged the average of their 3 months readings

LEGEND - 1996

C = commercial @ 15 cents per KWH
 C1 = commercial flat rate @ \$100 per month
 G = Government @ 15 cents per KWH
 F = residential flat rate @ \$15 per month
 I = current inactive for the month
 R = residential metered @ 11 cents per KWH
 L = lifeline for customers using less than 500kwh per month @ 11 cents.
 E = Estimated, where a meter appears to Malfunction or

Table 12.5 Locations of Major Infrastructure Facilities in RMI

Atoll Name	Locations of									
	Airports	Schools	Health Centers/ Dispensaries	Sea Ports	Power Plants	Water Catchments	Resorts/ Hotels, etc.	Local Gov't Headquarters	Solar Power	Fishbases/ Allied Facilities
Ailinglaplap	Aerok Jeh Woja	Aerok Enewe Buoj Jabwon Jah Jeh Kattiej Mejel Woja	Aerok Buoj Jah Jeh Katiej Woja	Aeinen Aerok Buoj Jah Jabwon Enewe Buoj Jeh Mejel Woja						Buoj
Ailuk	Ailuk	Ailuk Enejelar	Ailuk Enejelar	Ailuk Enejelar					Ailuk	
Arno	Ine Tinak	Arno Bikarej Ine Kilange Longar Lukoj Matolen Tutu Ulien	Arno Bikarej Ine Kilange Longar Tinak Tutu Ulien	Bikarej Inne Lukoj Malei Matolen Tinak Tutu Ulien						Arno Ine
Aur	Tobal	Aur Tobal	Aur Tobal	Aur Tobal					Aur Tobal	
Bikini	Enyu			-			Bikini	Majuro		Majuro
Ebon	Ebon	Ebon Enekoion Toka	Ebon Toka	Ebon Enekoion Toka						
Enewetak		Enewetak	Enewetak Medren	Enewetak				Enewetak		Enewetak
Jabat	Jabat	Jabat	Jabat	Jabat					Jabat	
Jaluit	Jabwor	Imiej Imroj Jabnoren Jabor Jaluit Mejatto Mejrirok Narmij	Imiej Imroj Jabnoren Jabwor Jaluit Mejatto Mejrirok Narmij	Imiej Imroj Jabnoren Jabwor Jaluit Mejatto Mejrirok Narmij	Jabwor		Jabwor			
Kili	Kili	Kili	Kili	Kili	Kili			Kili, Majuro		Kili
Kwajelein	Kwajelein*	Carlos Ebadon Ebeye Eniburr Mejatto	Ebadon Mejatto Santo	Ebadon Mejatto Santo	Ebeye Kwajelein		Ebeye	Ebeye		
Lae	Lae	Lae	Lae	Lae						
Lib		Lib	Lib	Lib						
Likiep	Likiep	Jebal Likiep Melan	Jebal Melan	Jebal Melan						Lotto
Majuro	Majuro*	Ajeltake Delap Laura Rairok Rita Rongrong Uliga Woja	Ejit Laura Rongrong	Majuro	Delap	Airport Laura	Delap Long Island Uliga	Delap		
Maloelap	Kaben Tarawa	Aerok Jang Kaben Ollet Tarawa	Aerok Jang Kaben Ollet Tarawa	Aerok Jang Kaben Ollet Tarawa						
Mejit	Mejit	Mejit	Mejit	Mejit						
Mili	Mili	Enejat Lukwonwod Mili Nallo Tokewa	Enijet Lukwonwod Mili Nallu Tokewa	Enejat Lukwonwod Mili Nadikdik Nallo Tokewa			Wau			
Namodrik	Namodrik	Namodrik	Namodrik	Namodrik					Namodrik	
Namu	Loen Majkin	Loen Mae Majkin Namu	Loen Mae Majkin Namu	Loen Mae Majkin Namu						Namu
Rongelap	-	-	-	-				Majuro		Majuro
Ujae	Ujae	Ujae	Ujae	Ujae						
Utirik	Utirik	Utirik	Utirik	Utirik				Majuro	Utirik	
Wotho	Wotho	Wotho	Wotho	Wotho						
Wotje	Wotje	Nibun Wodmej Wotje	Nibun Wodmej Wotje	Nibun Wodmej Wotje						

* International Airports

Sources: AMI, MOE, MOHE (OIDS), T&C, MWSC, MIVA, R&D, MIMRA